



PO BOX 147 ODELL, OR 97044 TEL: (541) 354-3222 FAX: (541) 354-3366

1/12/12

## OTEC - Catherine Creek Control House

Model #ME1-120-2423-L1-LG Modular Enclosure, per drawing #2423-R6, and to include the following:

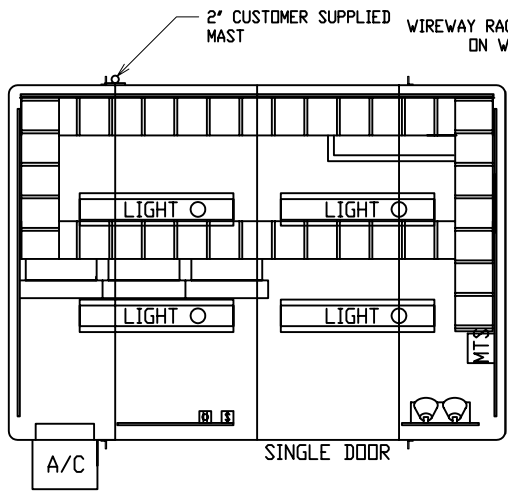
Item	Qty	Description
1	(1)	10' W X 14' L X 9'-3 H, fiberglass enclosure, light gray in color, with 1/4" fiberglass wall thickness nominal, 1-1/2" foam board insulation with glass facer on walls & roof, with 3/4" exterior grade plywood mounted on walls for equip mtg, white interior gelcoat on walls and plywood, Power Design #ME1-120-168
2	(1)	Single fiberglass door, 36" W x 84" H, 14 GA SS jamb, 3-point latch and padlockable, SS hardware
3	(1)	Air conditioner, 9500 Btu, window type, 120V with fiberglass hood, Friedrich #XQ10M10
4	(1)	AC breaker panel, 100A main breaker, NEMA 1, surface mount, 42 circuit, with breakers, 120/240 VAC, 225A bus, Cutler Hammer type Pow-R-Line
5	(1)	Manual transfer switch, 100A input, 120/240 VAC, Cutler Hammer #DT223UGK
6	(1)	DC breaker panel, 100A main breaker, NEMA 1, surface mount, 42 circuit, with breakers, 48 VDC, 225A bus, Cutler Hammer type Pow-R-Line
7	(2)	Heater, w/ wall mount adapter, 240V, 2000W, forced air, Cadet #CS202W & #CS4MW, with thermostat, Grainger #4LZ94
8	(1)	Meter base, 125A, 4 jaw, NEMA 3R, 1PH-3W, Cooper B-Line #U011



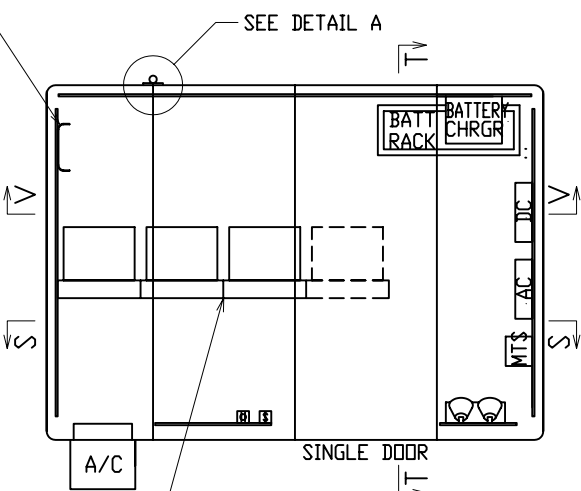
PO BOX 147 ODELL, OR 97044 TEL: (541) 354-3222 FAX: (541) 354-3366

- 9 (Lot) Miscellaneous equipment:
  - (4) Fluorescent lights, 2-tube, fiberglass housing, 32W, 120V, Lithonia #DMW 2 32 MVOLT
  - (3) Ventilation louvers w/ screens and insulated plugs
  - (1) Smoke detector with relay contacts, Kidde #1276E & #SM120X
  - (1) Ground bus loop inside, 3/8" dia copper rod
  - (Lot) Light switch, receptacles, EMT conduit, and wiring
  - (1) Emergency light, 28W, NEMA 3R, (2) lamps, Lithonia #INDX1254
  - (1) Outdoor nonmetallic vaportight luminaire, 120VAC, 150W McMaster-Carr #14835K94
  - (1) Motion sensor, adjustable light level and time delay, with manual override switch, Rab #SMS500
  - (Lot) Cable tray, wire type, 4"H x 12"W, Cablofil #CF105 300EZ
  - (5) SS unistrut strip for customer mast

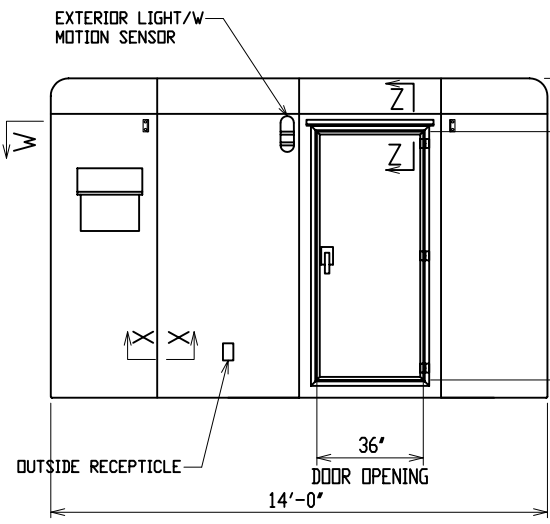
Note: No battery system provided with this unit.



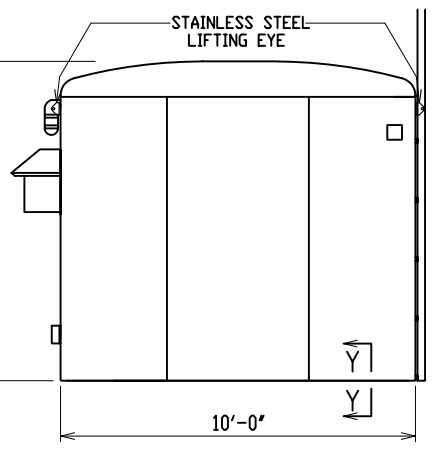
PLAN VIEW



SECTION W-W



FRONT VIEW



END VIEW

ORDERING INFORMATION:

MODEL ME 1 - 96 - 2423 - L1 - LG COLOR - LIGHT GRAY  
 NUMBER OF DOORS  
 NOMINAL WIDTH  
 DETAILS AS SHOWN ON THIS DRAWING  
 PROVISION FOR PADLOCKING ONLY

NOTE

1. MATERIAL:
  - 1) FIBERGLASS OUTER LAMINATE 1/4" NOMINAL THICKNESS, FOAM BOARD, R-11 WITH 1/8" FIBERGLASS SKIN LAMINATE
  - 2) EXTERIOR UV STABILIZED GELCOAT - 14 MIL NOMINAL THICKNESS LIGHT GRAY - WHITE INTERIOR
  - 3) FIRE RETARDANT - DOES NOT SUPPORT COMBUSTION
  - 4) STAINLESS STEEL HARDWARE
  - 5) ESTIMATED WEIGHT - 3200 POUNDS
2. STANDARDS:
  - 1) CONFORMS TO ANSI C57.12.28, PADMOUNT EQUIPMENT ENCLOSURE INTEGRITY STANDARD
  - 2) CERTIFIED TEST DATA OF ASTM STRUCTURAL STANDARDS AVAILABLE UPON REQUEST
3. DESIGN SPECIFICATIONS:
  - 1) DESIGN CODE  
2009 IBC - CATEGORY IV STRUCTURE
  - 2) DESIGN  
WIND SPEED - 100 MPH, EXPOSURE - C, IMPORTANCE - 1.15
  - 3) SEISMIC DESIGN  
SITE CLASS - D, S<sub>s</sub> - 1.25, S<sub>1</sub> - 0.60 IMPORTANCE - 1.5
  - 4) GRAVITY LOAD  
GRAVITY LOAD - 7 PSF  
ROOF LIVE LOAD (SNOW) - 30 PSF IMPORTANCE - 1.2

CATALOG NO: ME1-120-2423-L1-LG

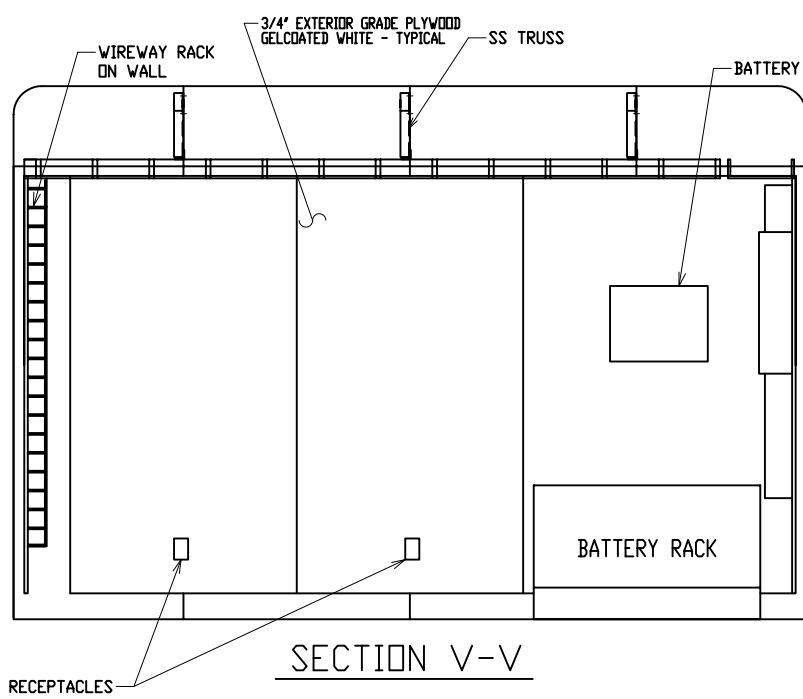
FIBERGLASS MODULAR ENCLOSURE  
 10 FT WIDE x 9 FT 3 IN HIGH x 14 FT LONG  
 ONE SINGLE DOOR - BRKR BOX, LIGHTS, RECEPTACLES, HEATER

**POWER DESIGN INC.**  
 ODELL, OREGON

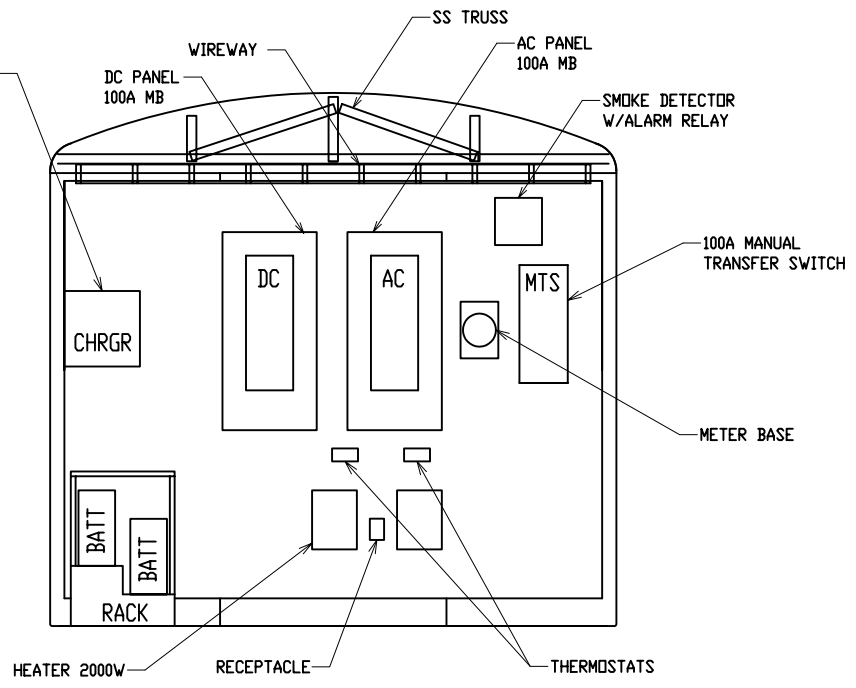
DRAWN: RB	PAGE 1 OF 8	DATE 3-2-09	DRAWING NO. 2423-R6
--------------	----------------	----------------	------------------------

OITECC

FILE REF:



SECTION V-V



SECTION T-T

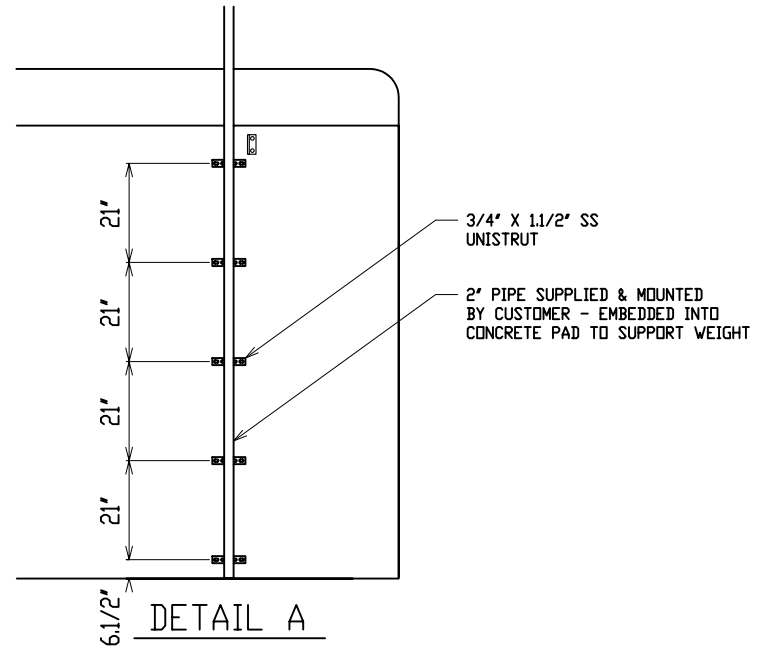
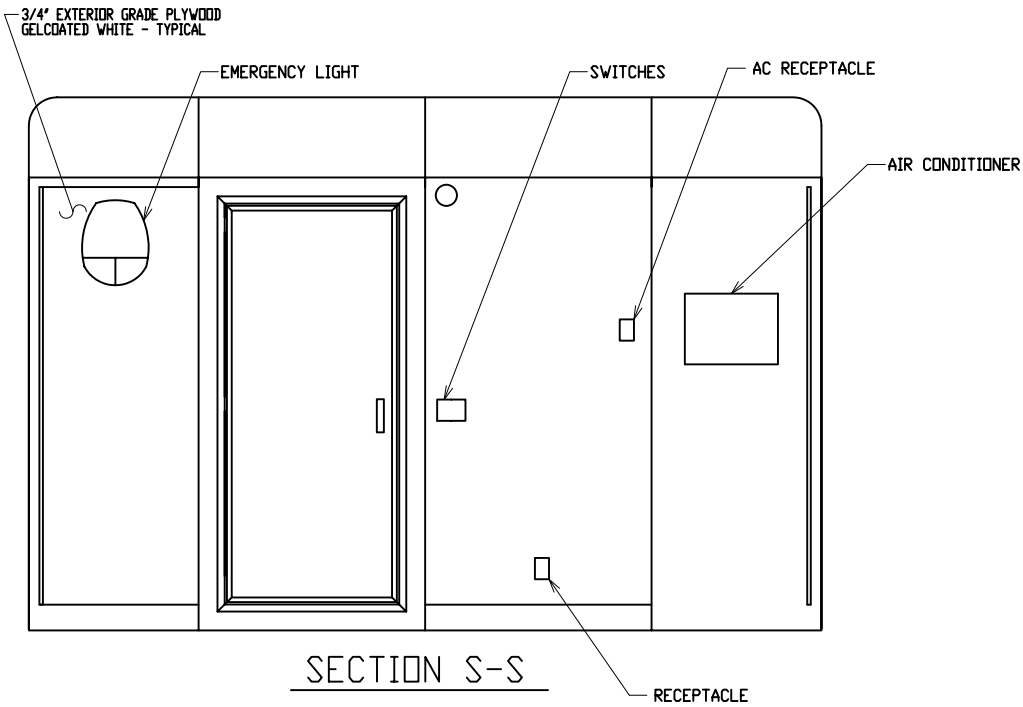
CATALOG NO: ME1-120-2423-L1-LG

FIBERGLASS MODULAR ENCLOSURE  
 10 FT WIDE x 9 FT 3 IN HIGH x 14 FT LONG  
 BUILDING DETAILS AND SECTIONS

**POWER DESIGN INC.**  
 ODELL, OREGON

OITECC	DRAWN:	PAGE	DATE	DRAWING NO.
	RB	2 OF 8	3-2-09	2423-R6

FILE REF:



CATALOG NO: ME1-120-2423-L1-LG

FIBERGLASS MODULAR ENCLOSURE  
10 FT WIDE x 9 FT 3 IN HIGH x 14 FT LONG  
BUILDING DETAILS AND SECTIONS

 **POWER DESIGN INC.**  
ODELL, OREGON

OTECC

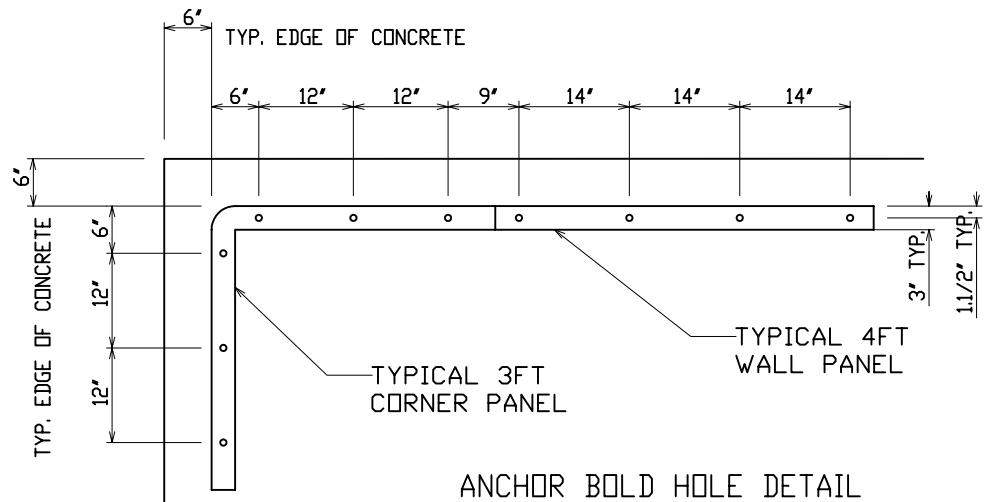
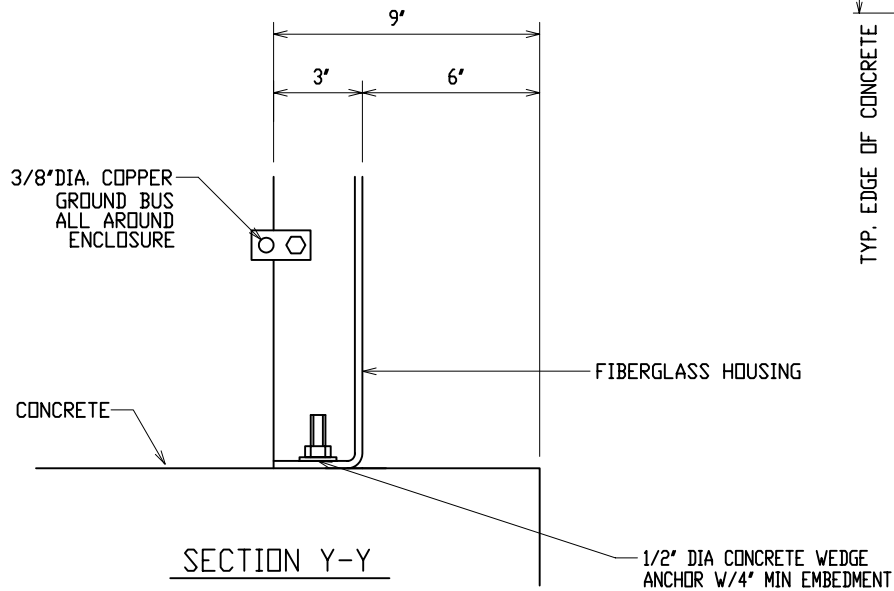
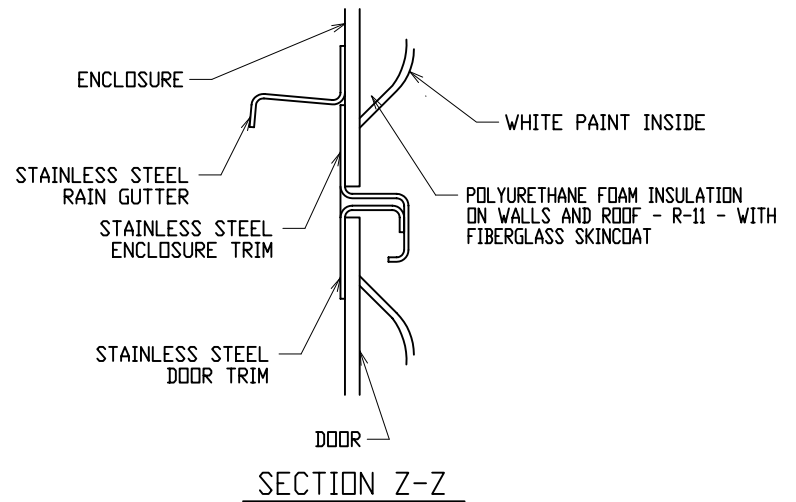
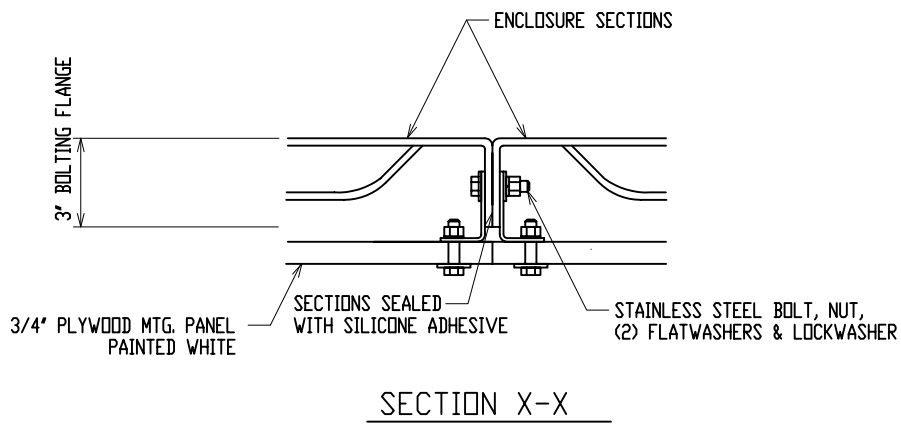
FILE REF:

DRAWN:  
RB

PAGE  
3 OF 8

DATE  
3-2-09

DRAWING NO.  
2423-R6



CATALOG NO: ME1-120-2423-L1-LG

FIBERGLASS MODULAR ENCLOSURE  
 10 FT WIDE x 9 FT 3 IN HIGH x 14 FT LONG  
 BUILDING DETAILS AND SECTIONS

**POWER DESIGN INC.**  
 ODELL, OREGON

OTECC

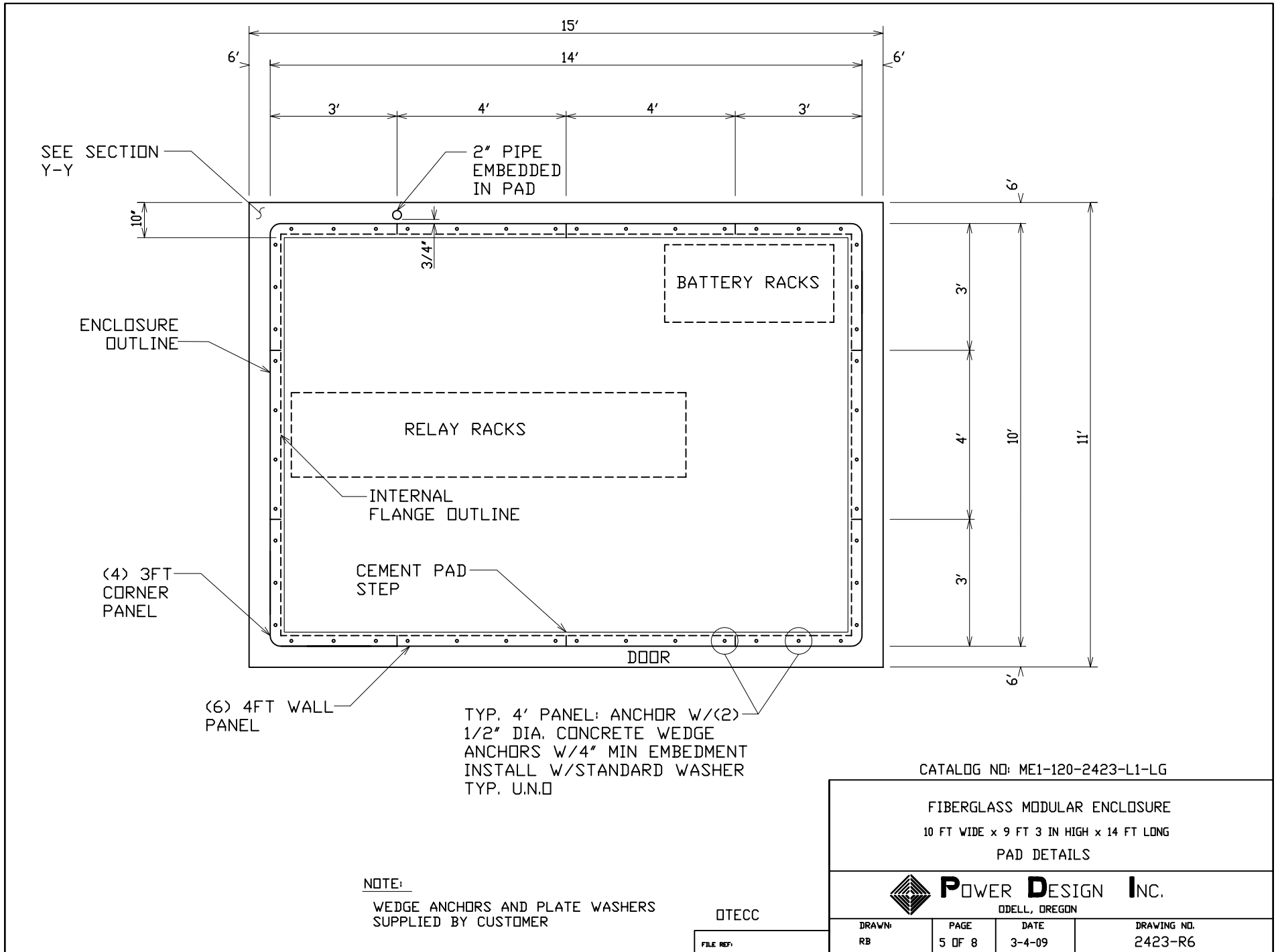
FILE REF:

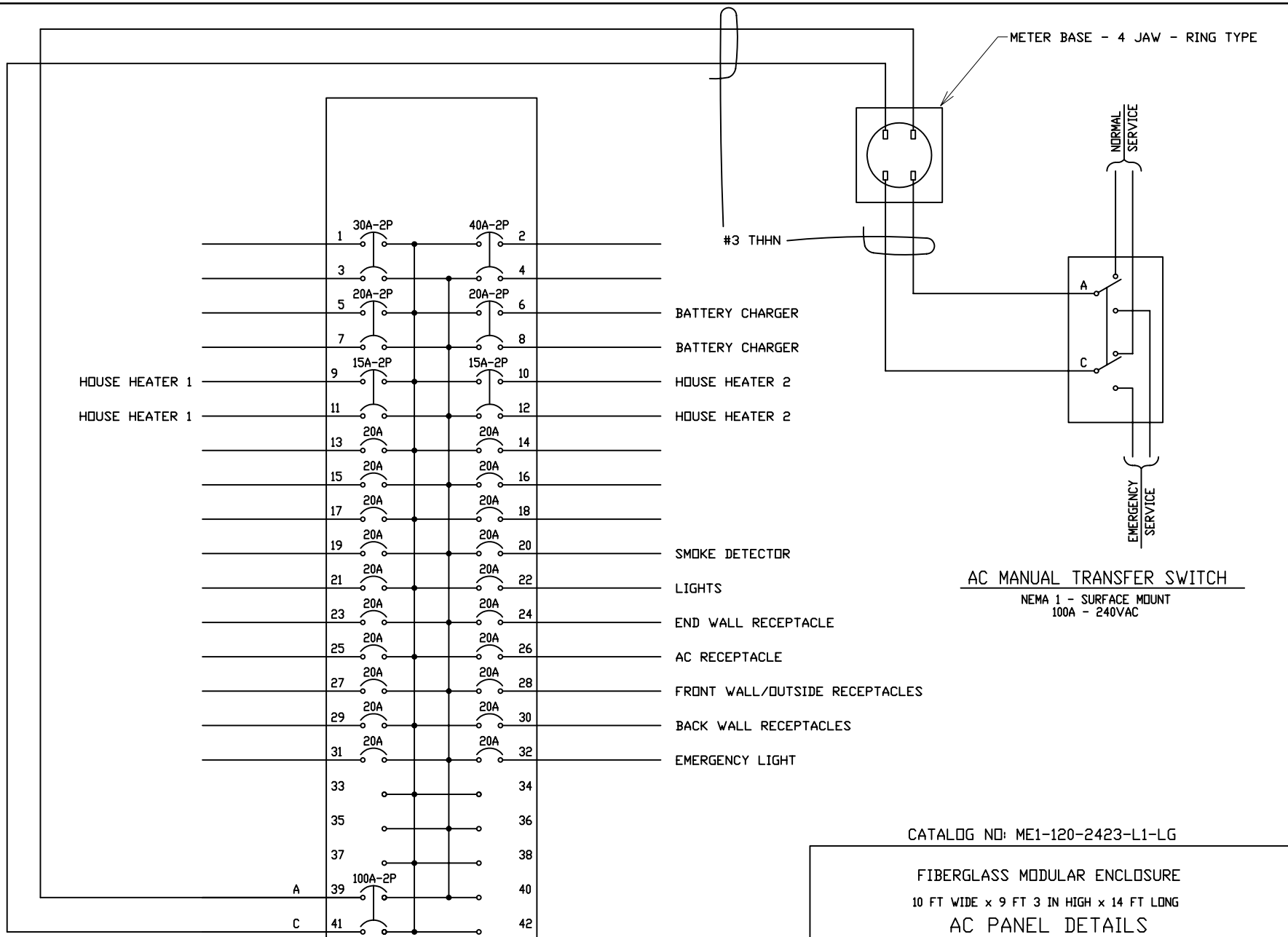
DRAWN:  
RB

PAGE  
4 OF 8

DATE  
3-2-09

DRAWING NO.  
2423-R6





**AC PANEL BOARD**  
 NEMA 1 - SURFACE MOUNT - MAIN CB  
 120/240 VAC

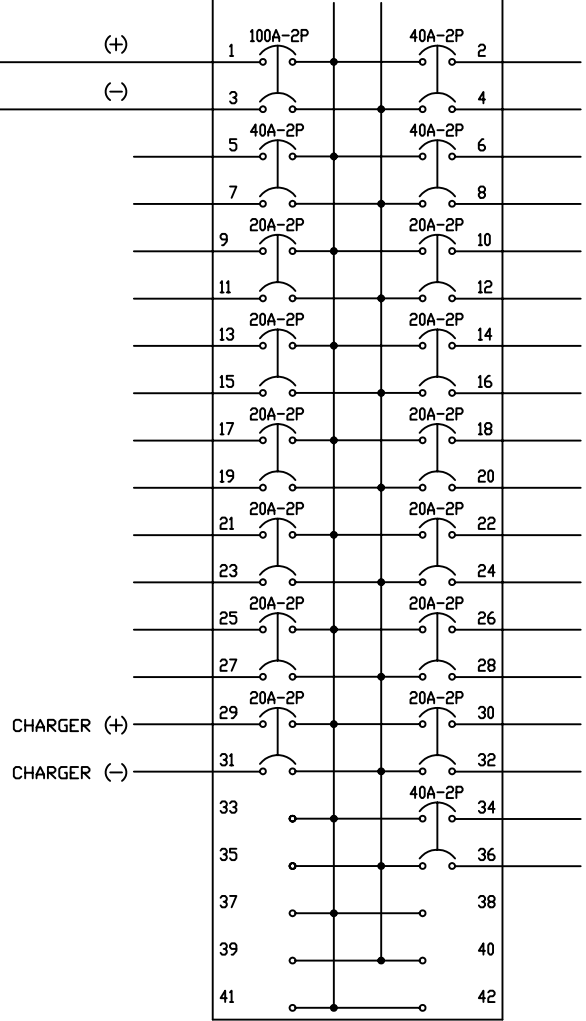
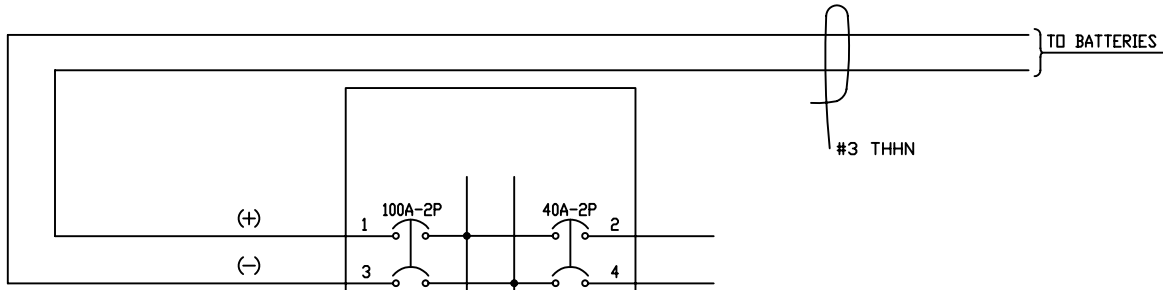
**AC MANUAL TRANSFER SWITCH**  
 NEMA 1 - SURFACE MOUNT  
 100A - 240VAC

CATALOG NO: ME1-120-2423-L1-LG

FIBERGLASS MODULAR ENCLOSURE  
 10 FT WIDE x 9 FT 3 IN HIGH x 14 FT LONG  
 AC PANEL DETAILS



DTECC		DRAWING NO.	
FILE REF:	DRAWN: RB	PAGE 6 OF 8	DATE 3-2-09
		2423-R6	



CHARGER (+)  
CHARGER (-)

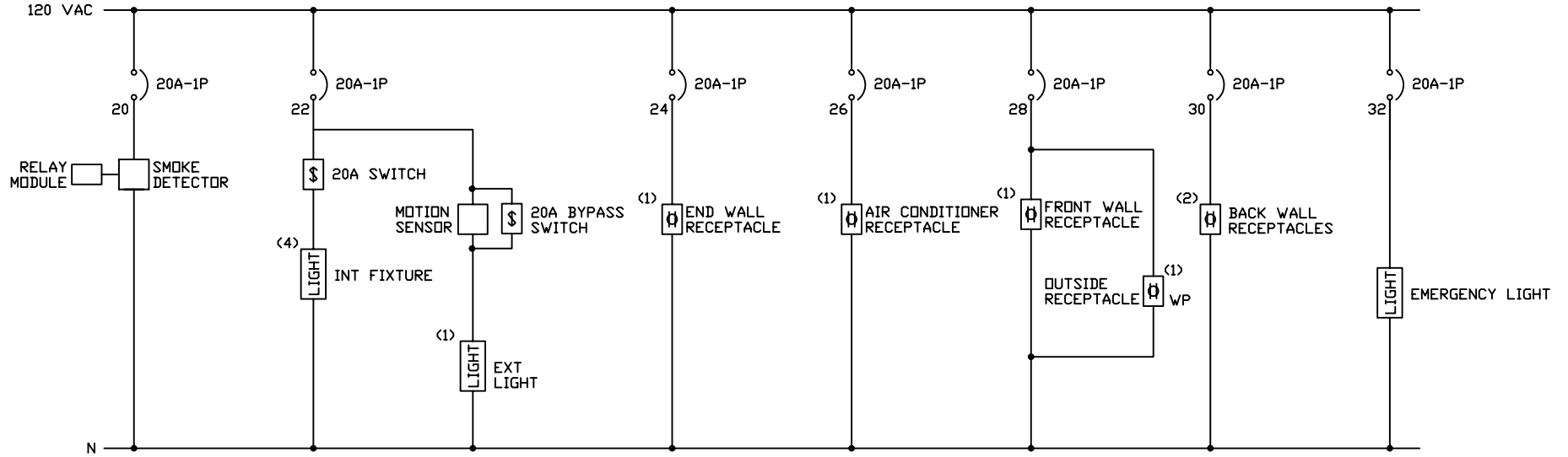
**DC PANEL BOARD**  
NEMA 1 - SURFACE MOUNT - MAIN CB  
48 VDC

CATALOG NO: ME1-120-2423-L1-LG

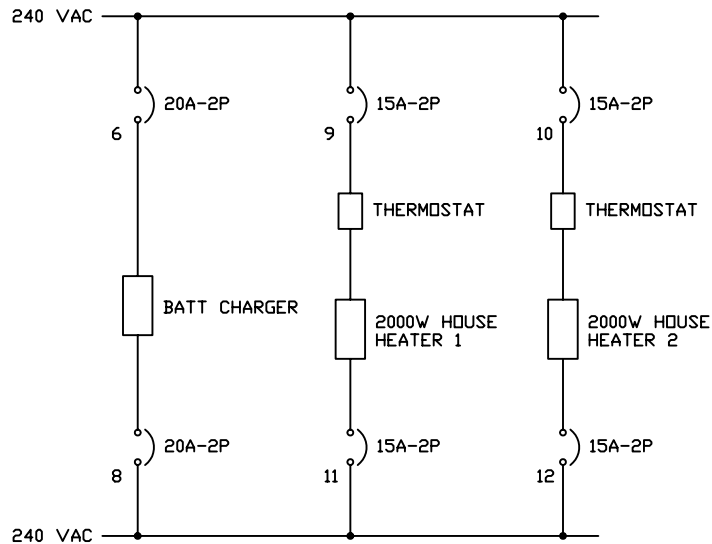
FIBERGLASS MODULAR ENCLOSURE  
10 FT WIDE x 9 FT 3 IN HIGH x 14 FT LONG  
DC PANEL DETAILS



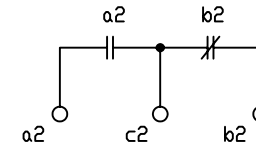
OITECC FILE REF:	DRAWN: RB	PAGE 7 OF 8	DATE 3-4-09	DRAWING NO. 2423-R6



120VAC CIRCUIT SCHEMATIC



240VAC CIRCUIT SCHEMATIC



SMOKE DETECTOR RELAY CONTACTS

NOTES

- 1) ALL WIRE TO BE #12 SOLID THHN, BLACK-PHASES, WHITE-NEUTRAL, GREEN-GROUND

CATALOG NO: ME1-120-2423-L1-LG

FIBERGLASS MODULAR ENCLOSURE  
10 FT WIDE x 9 FT 3 IN HIGH x 14 FT LONG  
AC CIRCUIT SCHEMATICS



**POWER DESIGN INC.**

ODELL, OREGON

OTECC

FILE REF:

DRAWN:  
RB

PAGE  
8 OF 8

DATE  
3-2-09

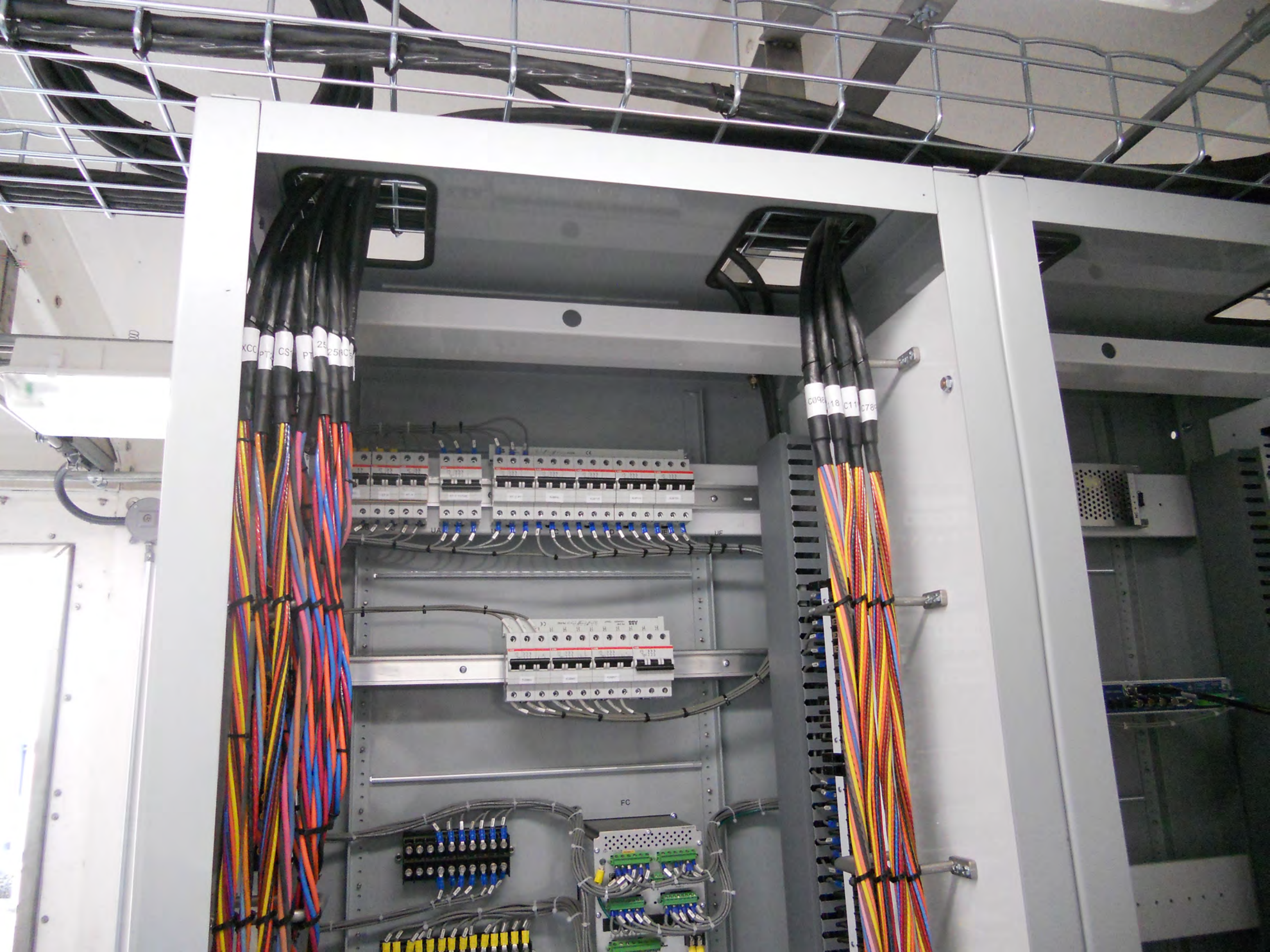
DRAWING NO.  
2423-R6











XCC  
CS  
PT  
25  
250C

C098  
18  
C11  
C78

FC



DCS SYSTEM  
OPERATION  
RELAY PANEL

DCS SYSTEM  
OPERATION  
RELAY PANEL

DCS SYSTEM  
OPERATION  
RELAY PANEL

DCS SYSTEM  
OPERATION  
RELAY PANEL

DCS SYSTEM  
OPERATION  
RELAY PANEL

DCS SYSTEM  
OPERATION  
RELAY PANEL

DCS SYSTEM  
OPERATION  
RELAY PANEL

DCS SYSTEM  
OPERATION  
RELAY PANEL

DCS SYSTEM  
OPERATION  
RELAY PANEL

DCS SYSTEM  
OPERATION  
RELAY PANEL



FRIEDRICH

1883



# ROOM AIR CONDITIONERS



WINDOW / THRU-THE-WALL / PORTABLE

XQ

Comfort & Convenience

- 24 hour timer lets you program on/off times
- 3 cooling speeds, plus fan-only setting
- Smart Fan adjusts fan speed to maintain desired temperature
- Comfortwatch technology samples the air to more accurately maintain the set temperature
- Money Saver® setting saves money by operating the fan only when cooling
- Ultraquiet operation
- 8-way air flow control
- Auto restart saves settings if power is interrupted

Health

- Washable antimicrobial filter for protection against fungal and bacterial growth

Installation

- Slide-out chassis
- Install in window or thru-the-wall
- Heavy duty installation hardware
- Heavy duty side curtains reduce exterior noise/light
- Power cord can run either left or right out of the side of the unit front
- The industry's smallest Btu slide-out chassis (model XQ05)

Safety Features

- EntryGard anti-intrusion protection
- Insect barrier

THE SMALLEST CAPACITY ROOM AIR CONDITIONER WITH SLIDE-OUT CHASSIS (MODEL XQ05, 5500 Btu)



EQ

Comfort & Convenience

- 2 cooling speeds, 2 heating speeds and fan-only setting
- Ultraquiet operation
- 8-way air flow control

Health

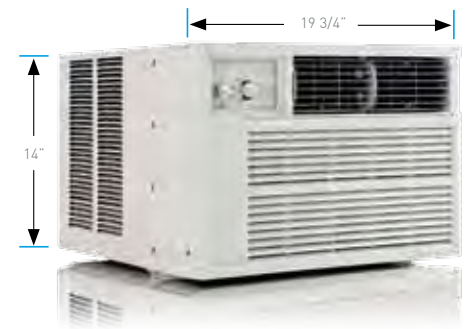
- Washable antimicrobial filter for protection against fungal and bacterial growth

Installation

- Slide-out chassis
- Install in window or thru-the-wall
- Heavy duty installation hardware
- Heavy duty side curtains reduce exterior noise/light
- Power cord can run either left or right out of the side of the unit front

Safety Features

- EntryGard anti-intrusion protection
- Insect barrier



COMPACT SIZE UNITS ARE IDEAL FOR SMALL AREAS OR TIGHT SPACES. CAN BE INSTALLED THRU-THE-WALL OR IN A WINDOW.

# XStar® Series



**XQ**  
 COOLING  
 5500-9500 Btu  
 Up to 12.0 EER



**EQ**  
 COOLING  
 7500 Btu  
 10.7 EER  
 ELECTRIC HEAT  
 4000 Btu

XQ. 50% smaller with programmable controls and commercial grade quality.

EQ. Heat/cool model with mechanical controls.

The XStar® Series is 50% smaller than our smallest Kühl model and fits in tighter installations. Slide-out chassis is perfect for either window or thru-the-wall installations

XQ Models are programmable, with features that include a 24-hour ON/OFF timer, auto adjusting Smart Fan, and a Money Saver® setting that reduces energy usage to save money.

EQ Model offers supplemental heating in addition to cooling performance.



SELECT MODE, FAN SPEED, ADJUST TEMPERATURE AND SET THE TIMER. (XQ MODEL ONLY)



★ ENERGY STAR® qualified

Model	Cooling Capacity Btu	Heating Capacity Btu	Volts Rated	Cooling Amps	Cooling Watts	Heating Amps	Heating Watts	COP	Energy Efficiency Ratio EER	Estimated Yearly Operating Cost	Moisture Removal Pints/HR	Room Side Air Circulation CFM	Sleeve	Net Weight Lbs
<b>Kühl</b>														
★ SS08M10	7900	—	115	6.1	677	—	—	—	11.7	\$54	1.0	265	S	99
★ SS10M10	9500	—	115	7.7	848	—	—	—	11.2	\$68	2.0	260	S	106
★ SS12M10	12000	—	115	10.0	1071	—	—	—	11.2	\$86	3.0	300	S	112
SS14M10	14000	—	115	12.0	1444	—	—	—	9.7	\$115	3.5	325	S	116
★ SS12M30	11700/11200	—	230/208	4.8/4.9	1026/982	—	—	—	11.4/11.4	\$82	2.8	275	S	112
SS15M30	14500/14300	—	230/208	6.4/6.8	1405/1385	—	—	—	10.3/10.3	\$112	3.5	360	S	116
★ SM18M30	17500/17200	—	230/208	7.4/8.0	1635/1617	—	—	—	10.7/10.7	\$131	4.6	350	M	140
★ SM21M30	20800/20700	—	230/208	9.4/10.3	2080/2070	—	—	—	10.0/10.0	\$166	6.0	425	M	132
★ SM24M30	23500/23300	—	230/208	11.2/11.9	2500/2479	—	—	—	9.4/9.4	\$200	10.0	390	M	152
★ SL28M30	27800/27000	—	230/208	13.5/14.4	2865/2812	—	—	—	9.7/9.6	\$229	8.5	600	L	193
★ SL36M30	36000/35700	—	230/208	19.0/20.5	4235/4200	—	—	—	8.5/8.5	\$338	12.0	725	L	212
<b>Kühl + Heat Pump</b>														
★ YS10M10*	9500	7500	115	7.8	812	7.6	743	3.0	11.7	\$65	1.9	285	S	109
★ YS12M33	12100/12100	9400/9000	230/208	5.2/5.4	1120/1120	5.6/5.8	1132/1139	2.4	10.8/10.8	\$89	3.0	265	S	115
★ YM18M34	18200/17800	15500/15400	230/208	8.5/8.9	1838/1798	8.5/8.7	1833/1761	2.6	9.9/9.9	\$147	5.4	370	M	141
★ YL24M35	24000/23600	23500/23200	230/208	11.1/12.0	2474/2433	12.2/14.3	2610/2575	2.6	9.7/9.7	\$198	7.0	600	L	197
<b>Kühl + Electric Heat</b>														
ES12M33	11700/11200	10700/8900	230/208	4.8/4.9	1026/982	16.0/14.7	3500/2900	—	11.4/11.4	\$82	2.8	275	S	113
ES15M33	14500/14300	10700/8900	230/208	6.4/6.8	1405/1385	16.0/14.7	3500/2900	—	10.3/10.3	\$112	3.5	360	S	117
EM18M34	17500/17200	13000/10600	230/208	7.4/8.0	1635/1617	19.5/17.0	4200/3500	—	10.7/10.7	\$131	4.6	350	M	141
EM24M34	23500/23300	13000/10600	230/208	11.2/11.9	2500/2479	19.5/17.0	4200/3500	—	9.4/9.4	\$200	10.0	390	M	153
EL36M35	36000/35700	17300/14300	230/208	19.0/20.5	4235/4200	24.0/22.4	5500/4650	—	8.5/8.5	\$338	12.0	725	L	213
<b>XStar®</b>														
★ XQ05M10	5500	—	115	4.5	491	—	—	—	11.2	\$39	1.0	170	Q	72
★ XQ06M10	6000	—	115	4.9	500	—	—	—	12.0	\$40	1.0	175	Q	72
★ XQ08M10	7500	—	115	6.9	701	—	—	—	10.7	\$56	1.7	175	Q	71
XQ10M10	9500	—	115	9.0	970	—	—	—	9.8	\$77	2.5	180	Q	71
<b>XStar® Electric Heat</b>														
EQ08M11	7500	4000	115	6.9	701	11.2	1290	2.8	10.7	\$56	1.9	175	Q	72
<b>CP</b>														
★ CP05N10A	5500	—	115	4.8	510	—	—	—	10.7	\$41	1.3	135	P1	46
★ CP06F10	6000	—	115	5.1	560	—	—	—	10.7	\$45	1.8	210	P6	51
★ CP08F10	7800	—	115	6.8	720	—	—	—	10.8	\$58	2.3	250	P6	54
★ CP10F10	10000	—	115	8.5	920	—	—	—	10.8	\$74	3.0	270	P7	73
★ CP12F10	12000	—	115	10.2	1110	—	—	—	10.8	\$89	3.3	310	P7	73
★ CP15F10	14700	—	115	12.0	1370	—	—	—	10.7	\$110	3.5	470	P4	121
★ CP18F30	18000/17600	—	230/208	8.1/8.8	1680/1640	—	—	—	10.7	\$135	4.6	570	P5	141
★ CP24F30	24230/23540	—	230/208	10.9/11.8	2580/2500	—	—	—	9.4	\$206	7.0	590	P5	165

\* Operates on 115 volt and is not equipped with supplemental heat. Will not provide heat at temperatures below 40°F. Friedrich room air conditioners are designed to operate in outdoor temperatures from 60° F to 115° F.

Due to continuing research in new energy-saving technology, specifications are subject to change without notice.

As an ENERGY STAR® partner, Friedrich Air Conditioning Co. has determined that the selected ENERGY STAR® (★) models meet the ENERGY STAR® guidelines for energy efficiency.

The consumer- through the AHAM Room Air Conditioner Certification Program- can be certain that the AHAM Certification Seal accurately states the unit's cooling and heating capacity rating, the amperes and the energy efficiency ratio.

Estimated yearly operating cost based on a 2007 national average electricity cost of 10.65 cents per kWh.

† The estimated yearly operating cost of this model was not available at the time the range was published.



# INSTALLATION INFORMATION / SLEEVE DIMENSIONS

Sleeve	Height	Width	Depth with Front	Shell Depth to Louvers	Minimum Extension Into Room*	Minimum Extension Outside*	Window Width		Thru-the-wall Installation Finished Hole		
			A	B			Minimum**	Maximum	Height	Width	Max. Depth C
Q	14"	19 3/4"	21 3/8"	8 1/2"	5 1/2"	10 3/4"	22"	42"	14 1/4"	20"	8 1/2"
P1†	12"	18 1/2"	15"	5"	3 1/2"	10 3/4"	20 1/8"	36"	NOT FOR THRU-WALL		
P4	17 1/2"	26"	27 5/8"	8 7/8"	5 1/2"	16 5/8"	26 1/2"	42"	17 3/4"	26 1/4"	8 3/8"
P5	17 1/2"	26"	29 3/4"	8 7/8"	5 1/2"	19 1/2"	26 1/2"	42"	17 3/4"	26 1/4"	8 3/8"
P6	14"	18 3/8"	20 7/8"	8 1/8"	4 1/2"	11"	20 1/8"	36"	14 1/4"	18 3/4"	7 1/2"
P7	15"	23 5/8"	22 1/4"	8 3/4"	4 1/2"	12"	25 1/4"	39"	15 1/4"	23 7/8"	8"
S	15 15/16"	25 15/16"	29"	8 3/4"	5 3/4"	16 15/16"	27 3/8"	42"	16 3/16"	26 3/16"	7 3/8"
M	17 15/16"	25 15/16"	29"	8 3/4"	5 3/4"	16 15/16"	27 3/8"	42"	18 3/16"	26 3/16"	7 3/8"
L	20 3/16"	28"	35 1/2"	16 1/2"	5 3/8"	18 15/16"	29 7/8"	42"	20 3/8"	28 1/4"	15 1/8"



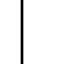

\* Minimum extensions when mounted in a window.

\*\* Minimum widths achieved using one side curtain assembly as opposed to both in a standard installation.

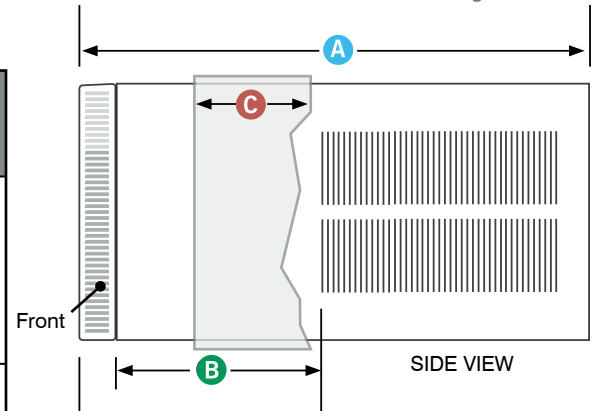
† Sleeve P1 does not have thru-the-wall hole dimensions, as these units are fixed chassis and should not be installed thru-the-wall.

NOTE: S, M and L sleeves may be installed in window with no side kits if properly installed.

## Circuit Rating/ Breaker

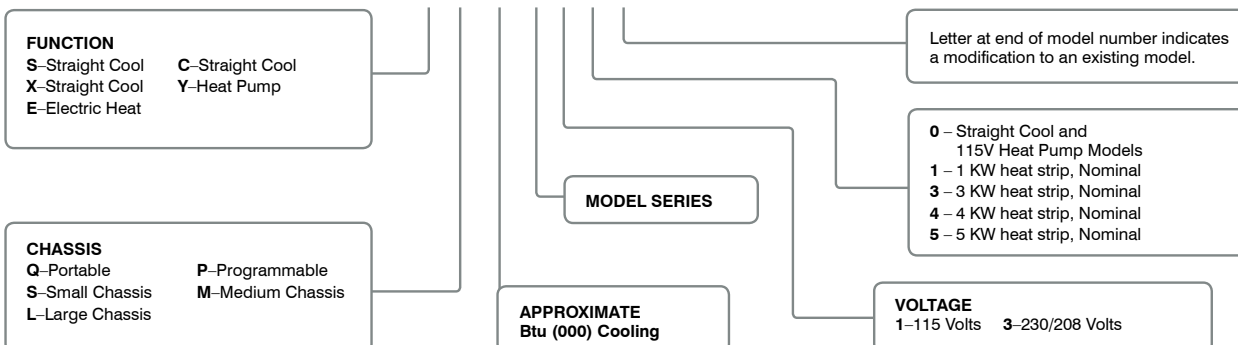
Model	Circuit Rating Breaker or T-D Fuse	Plug Face (NEMA#)	Power Cord Length (ft.)	Wall Outlet Appearance
CP05			7	
CP06, CP08, CP10, CP12 and CP15. All XQ MODELS. SS08M10, SS10M10, SS12M10 and SS14M10. EQ08M11. YS10M10.	125V - 15A	5 - 15P	6	
CP18. SS12M30, SS15M30, SM18M30 and SM21M30.	250V - 15A	6 - 15P	4	
CP24. SM24M30 and SL28M30. ES12M33 and ES15M33. YS12M33.	250V - 20A	6 - 20P	4	
SL36M30. EM18M34, EM24M34 and EL36M35. YM18M34 and YL24M35.	250V - 30A	6 - 30P	4	

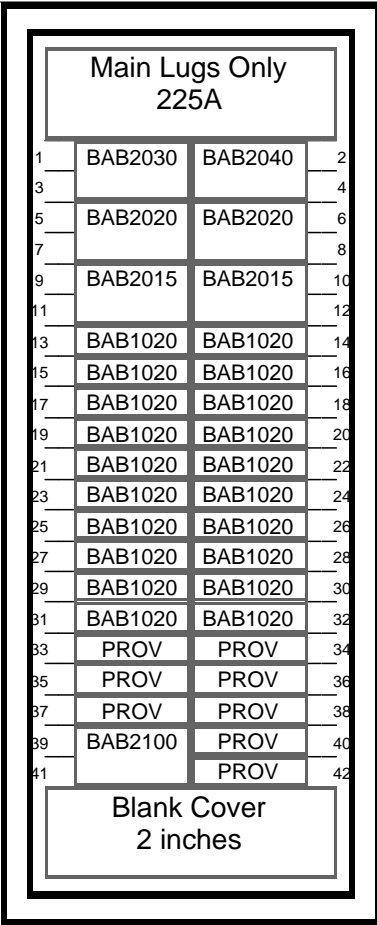
Sleeve Dimensions Drawing



## Room Air Conditioner Model Identification Guide

**S L 28 M 3 0 A**





**General Information**

**(Section 1 of 1)**

**Service Voltage:** 120/240V 1Ph 3W **Enclosure:** Type 1  
**Bus Rating & Type:** 225A Aluminum **Neutral Rating:** 225A  
**Ground Bar:** Std. Bolted Aluminum, Al or Cu cable  
**S.C. Rating:** 10k A.I.C.Fully Rated

**Main Device Type:** Main Lugs Only - Top Cable Entry  
**Main Terminals:** Mechanical - (1) #6-300 kcmil (Cu/Al)  
**Neutral Terminals:** Mechanical - (1) #6-300 kcmil (Cu/Al)  
**Box Catalog No.:** EZB2042R  
**Trim:** EZ Trim, Door in Door, Concealed Hardware (EZT2042S)  
  
 Surface Mounted

**Box Dimensions:** 42" [1066.8mm]H x 20" [508.0mm]W x 5.75" [146.0mm]D  
**Min. Gutter Size:** Top = 5.5" [139.7mm] Bottom = 5.5" [139.7mm]  
 Left = 6.0" [152.4mm] Right = 6.0" [152.4mm]

**Panel ID Nameplate:** (1) AC PANEL BOARD  
**Type:** Plastic, adhesive-backed (2) 120/240V 1Ph 3W  
**Color:** White with Black Letters (3)

**NEC Lighting & Appliance, UL CTL** \*\*\*Non-Interchangeable Main Device\*\*\*

Trim Lock:Standard Lock & Key (Keyed WEM2)  
 Circuit Directory:Plastic Sleeve with Card

**Device Modifications:**

**Ref # Description**

**Branch Devices**

Qty	Poles	Trip	Frame	Amps	KAIC
1	2	40	BAB	100	10
1	2	30	BAB	100	10
2	2	20	BAB	100	10
2	2	15	BAB	100	10
20	1	20	BAB	100	10
1	2	100	BAB	100	10
8	1		PROV		

**Notes**

The information on this document is created by Eaton Corporation. It is disclosed in confidence and it is only to be used for the purpose in which it is supplied.

PREPARED BY: E262 DATE: 10/22/09

**Eaton Corporation**

APPROVED BY: DATE: 10/22/09

JOB NAME: Oct 22  
 DESIGNATION: AC PANEL BOARD

VERSION: 6.9

TYPE: PRL1a

DRAWING TYPE: Customer Approval

NEG-ALT NUMBER: E2621022K901-0000

REVISION

DWG SIZE: A

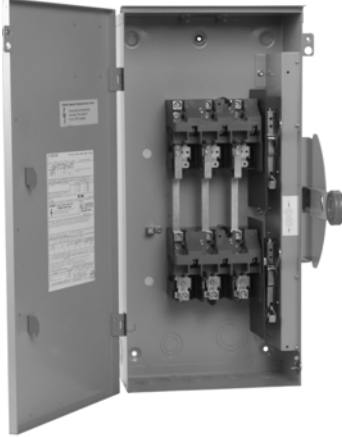
G.O.

ITEM

SHEET: 1 OF 1



Heavy-Duty Double-Throw



### Double-Throw Switches

#### Product Description

Used to transfer service from a normal power source to an alternate source...or to switch from one load circuit to another.

- 30–1200A
- Horsepower rated
- 600 Vac, 250 Vdc maximum
- 800–1200A fusible utilize common set of fuses; two Source 1 load applications
- Fusible or non-fusible
- Fusible and non-fusible switches are 100% load break and 100% load make rated
- Suitable for service entrance applications unless otherwise noted
- The continuous load current of fusible switches is not to exceed 80% of the rating of fuses employed in other than motor circuits. Non-fusible switches are 100% fully rated
- Approved for service entrance with neutral or ground lug kit installed
- Wiring configuration from factory allows a single load to be supplied by a normal or alternate source. Can be field modified to allow two loads to be alternately supplied by a single power source

### Contents

<i>Description</i>	<i>Page</i>
Product Overview . . . . .	2
General Duty . . . . .	24
Heavy-Duty . . . . .	29
Six-Pole Switches . . . . .	42
Double-Throw Switches	
Features, Benefits and Functions . . . . .	45
Standards and Certifications . . . . .	45
Product Selection . . . . .	46
Technical Data and Specifications . . . . .	50
Dimensions . . . . .	50
EnviroLine—Stainless Steel Switch . . . . .	52
EnviroLine—Upper and Lower Window Switches . . . . .	55
EnviroLine—Receptacle Switches . . . . .	58
EnviroLine—Non-Metallic Halyester Switch . . . . .	60
EnviroLine—Non-Metallic KRYDON Switch . . . . .	62
NEMA 7/9—Hazardous Location Disconnect Switch . . . . .	64
Quick Connect Switches . . . . .	66
Solar Disconnect Switch . . . . .	68
Solar Combiner Box—Source Combiner and Array Combiner . . . . .	70
316-Grade Stainless Steel Safety Switches . . . . .	73
Mill-Duty Rated, Heavy-Duty, Fusible, Non-Fusible, Single-Throw . . . . .	77
Heavy-Duty Fusible Safety Switches Accepting Cube Fuses . . . . .	79
Elevator Control Switch . . . . .	82
Auxiliary Power Heavy-Duty Safety Switch . . . . .	84
Left-Handed Safety Switch . . . . .	87
200% Neutral Safety Switches . . . . .	88
Pringle Bolted Pressure Switch . . . . .	89
Type DS, Fusible and Non-Fusible . . . . .	92
Type Visi-Flex DE-ION . . . . .	95
Flange Mounted—Variable Depth . . . . .	99
Flange Mounted—Fixed Depth . . . . .	103

#### **40 Vac General-Duty, Non-Fusible, Compact Design, Double-Throw**

- 30–100A
- Suitable for service entrance use with neutral kit installed
- Non-fusible

#### **240 Vac General-Duty, Non-Fusible, Double-Throw**

- 30–400A
- Horsepower rated
- Suitable for service entrance use with neutral kit installed
- Non-fusible
- Quick-make, quick-break operating mechanism

#### **240 Vac Heavy-Duty, Fusible, Non-Fusible, Double-Throw**

- 30–800A
- Horsepower rated
- Suitable for service entrance use with neutral kit installed
- Fusible and non-fusible
- For factory modifications, refer to **Pages 17 through 20**

**Features, Benefits and Functions**

- Ample wire bending space provides for easier installation
- Visible double-break quick-make, quick-break rotary blade mechanism. Two points of contact provide a positive open and close, easier operation, and also help prevent contact burning for longer contact life
- Triple padlocking capability. Personnel safety feature since the large hasp can accommodate up to three 3/8-inch (9.5 mm) shank locks. Clearly visible handle. The position (ON or OFF) can be clearly seen from a distance
- Deionizing arc chutes; arc chutes confine and suppress the arcs produced by opening contacts under load
- Additional locking capability; cabinet door can be further padlocked at the top and bottom
- Clear line shield (provided on fusible double-throw) protects against accidental contact with energized parts. Probe holes enable the user to test if the line side is energized without removing the shield
- Tangential knockouts on sides, top and bottom. Enables any size of conduit to be mounted close to the wall, providing for cable installation closer to the wall and a neat appearance

**Standards and Certifications**

- UL listed switching neutral capability is available on three-pole and four-pole non-fusible double-throw switches with the installation of the proper bonding kit shown on **Page 15**
- Suitable for use as a manually operated switch per 2005 NEC Article 702
- UL listed File No. E5239



## 240 Vac Heavy-Duty, Fusible, Double-Throw

Ampere Rating Main and Standby	Fuse Class Provision	Maximum Horsepower Ratings with Time Delay Fuses						DC 250V	NEMA 1 Enclosure Indoor Catalog Number	NEMA 3R Enclosure Rainproof Catalog Number
		Single-Phase AC			Three-Phase AC					
		240V	480V	600V	240V	480V	600V			
<b>Two-Pole—240 Vac—250 Vdc</b>										
200	H	15	—	—	—	—	—	40	DT224FGK	DT224FRK
<b>Three-Pole—240 Vac—250 Vdc</b>										
30	H	3	—	—	7-1/2	—	—	5	DT321FGK	DT321FRK
60	H	10	—	—	15	—	—	10	DT322FGK	DT322FRK
100	H	15	—	—	30	—	—	20	DT323FGK	DT323FRK
200	H	15	—	—	60	—	—	40	DT324FGK	DT324FRK
400	H	—	—	—	125	—	—	50	DT325FGK	DT325FRK
600 <sup>①</sup>	T	—	—	—	50	—	—	50	DT326FGK	DT326FRK
800	T	—	—	—	—	—	—	—	DT327FGK	DT327FRK
1200	T	—	—	—	—	—	—	—	DT328FGK	DT328FRK

## 240 Vac Heavy-Duty, Non-Fusible, Double-Throw

Ampere Rating Main and Standby	Maximum Horsepower Ratings						DC 250V	NEMA 1 Enclosure Indoor Catalog Number	NEMA 3R Enclosure Rainproof Catalog Number
	Single-Phase AC			Three-Phase AC					
	240V	480V	600V	240V	480V	600V			
<b>Two-Pole—240 Vac—250 Vdc</b>									
30	3	—	—	—	—	—	5	DT221UGK	③
60	10	—	—	—	—	—	10	DT222UGK	③
100	20	—	—	—	—	—	20	DT223UGK	③
200	15	—	—	—	—	—	40	DT224UGK	DT224URK
400	—	—	—	—	—	—	50	DT225UGK	DT225URK
600	—	—	—	—	—	—	—	DT226UGK	③
800	—	—	—	—	—	—	—	DT227UGK	DT227URK
1200	—	—	—	—	—	—	—	DT228UGK	DT228URK
<b>Three-Pole—240 Vac—250 Vdc</b>									
30	3	—	—	10	—	—	5	DT321UGK	③
60	10	—	—	20	—	—	10	DT322UGK	③
100	20	—	—	40	—	—	20	DT323UGK	DT323URK
200	15	—	—	60	—	—	40	DT324UGK	DT324URK
400	—	—	—	125	—	—	50	DT325UGK	DT325URK
600	—	—	—	125	—	—	50	DT326UGK	③
800	—	—	—	125	—	—	50	DT327UGK <sup>②</sup>	DT327URK
800	—	—	—	125	—	—	50	DT327UGK-N	DT328URK
1200	—	—	—	125	—	—	50	DT328UGK	—

**Notes**

- ① Only available for use with fast-acting fuses. Standard hp rating is shown.  
 ② Field-installable neutral kit is not available. If a neutral is required, order the catalog number shown in the table with "N" suffix.  
 ③ Contact the Safety Switch Flex Center (**1-888-329-9272**) for availability of this product.

UL listed switching neutral capability is available on three-pole and four-pole non-fusible double-throw switches with the installation of the proper bonding kit shown on **Page 15**. See **Page 19** for factory installation from the Flex Center.

Catalog Number	
Notes	Type

## FEATURES & SPECIFICATIONS

### INTENDED USE

Intended for low to medium mounting heights where dust, dirt, humidity, moisture, or corrosive elements are present. Ideal for canopies, dock areas, wastewater treatment, refrigerated areas, food processing and other non-hazardous environments.

### CONSTRUCTION

Housing formed from impact resistant, UV stabilized, fiberglass reinforced polyester with cold-rolled steel enclosed wireway. Poured in gasketing provides a seal between housing and diffuser. Captive, corrosion-resistant cam-action latches secure the diffuser; six on 4' units, and ten on 8' units. Stainless steel latches available.

### FINISH

Painted parts pretreated with a five-stage iron-phosphate process to ensure superior paint adhesion and corrosion resistance, then finished with a high-gloss, baked white enamel.

### OPTICAL SYSTEM

Acrylic diffuser with a stippled interior surface to spread lamp image. High-impact diffuser optional.

### ELECTRICAL SYSTEM

Thermally protected, resetting, Class P, HPF, non-PCB, UL Listed and CSA Certified ballast is standard. Sound rating depends on lamp/ballast combination.

AWM, TFN, THHN wire throughout, rated for required temperatures.

### INSTALLATION

For unit or row installations, surface (ceiling or wall) or suspended mounting.

### LISTING

120V, 277V and MVOLT are UL Listed and CSA Certified (standard). 347V is CSA Certified (see Options). NOM Certified (see Options). Suitable for wet (DMW) or damp (DM) locations.

### WARRANTY

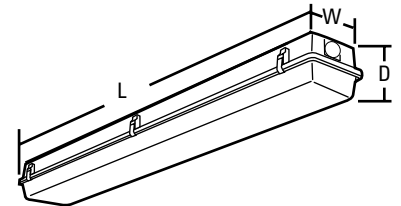
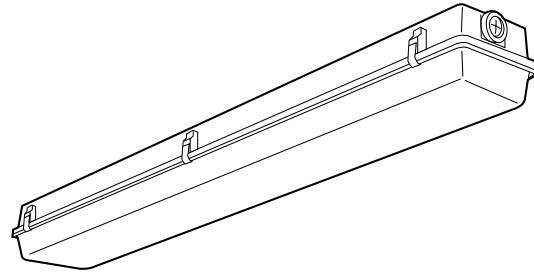
Guaranteed for one year against mechanical defects in manufacture.

## Enclosed and Gasketed Industrial

# DM/DMW

## Rapid Start

4' or 8' length  
1, 2 or 3 lamps



### Specifications

Length:	50" (1270)
	98" (2489)
Width:	8-1/8" (206)
Fixture Depth:	5-5/8" (143)

All dimensions are inches (millimeters).  
Specifications subject to change without notice.

## ORDERING INFORMATION

Example: **DMW 2 32 120 GEB**

Choose the boldface catalog nomenclature that best suits your needs and write it on the appropriate line. Order accessories as separate catalog number.

Series	Number of lamps	Lamp type	Diffuser	Voltage	Options
<b>DM</b> Damp location	1, 2, 3 <sup>1</sup> Not included	<b>32</b> 32W T8 (48")	(blank) Acrylic(15% DR)	<b>120</b>	<b>ES</b> Energy-saving ballasts (40W lamps only)
<b>DMW</b> Wet location		<b>40</b> 40W T12 (48")	<b>AR</b> High-impact acrylic (50% DR)	<b>277</b>	<b>CW</b> Cold-weather ballasts, 0°F starting <sup>4</sup>
For tandem double-length unit, add prefix T. Example: <b>TDM</b>			<b>DP</b> Deep acrylic <sup>2</sup>	<b>347</b>	<b>ELDW</b> Emergency battery pack (nominal 300 lumens)
			<b>ARDP</b> Deep high-impact acrylic <sup>2</sup>	<b>MVOLT<sup>3</sup></b> Others available	<b>EL5DW</b> Emergency battery pack (nominal 500 lumens)
					<b>EL6DW</b> Emergency battery pack (nominal 600 lumens)
					<b>EL14DW</b> Emergency battery pack (nominal 1400 lumens)
					<b>GEB</b> Electronic ballasts, ≤20% THD
					<b>GEB10IS</b> Electronic ballasts, ≤10% THD, Instant Start <sup>1</sup>
					<b>GEB10RS</b> Electronic ballasts, ≤10% THD, Rapid Start <sup>5</sup>
					<b>GLR</b> Internal fast-blow fuse
					<b>GMF</b> Internal slow-blow fuse
					<b>NSF</b> NSF International certification <sup>6</sup>
					<b>RIF1</b> Radio interference filter, 1 per fixture
					<b>STSL</b> Stainless steel latches
					<b>WLF</b> Wet location fittings (1 pair, installed in fixture top)
					<b>CSA</b> CSA Certified (Only required for 347V).
					<b>NOM</b> NOM Certified.

### Accessories

Order as separate catalog numbers.

**BCD** Bracket for hanger chain mounting. Two per package.

**HC36** Chain hangers (1 pair, 36" long). Requires BCD.

**WLF** Wet location fittings (1 pair, not installed).

### Notes

- 32W T8 lamps only.
- Deep lens is standard on 8' fixtures.
- MVOLT available with GEB10IS only.
- Not recommended for use in ambient temperatures exceeding 40°F.
- Available with only 32 watt and 40 watt lamp types.
- Available for the DMW only.

# DM/DMW Rapid Start

## MOUNTING DATA

For unit or row installation, surface (ceiling or wall) or suspended mounting.

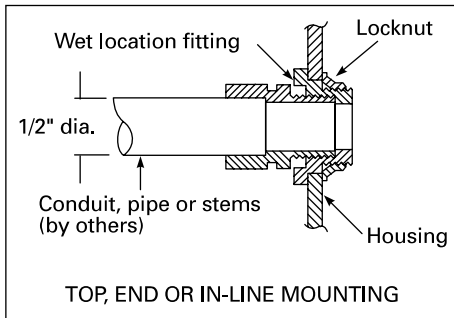
**DM/DMW** — Drill holes through housing and channel at appropriate locations.

**DMW** — Includes gasketed wet location fittings on ends for power feeding/mounting. Fitting is threaded for 1/2" rigid conduit (optional WLF for top mounting). Attach to surface using fasteners and sealing washers (by others) appropriate to ceiling materials.

Unit installation — Minimum of two hangers required.

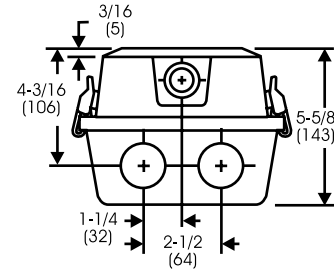
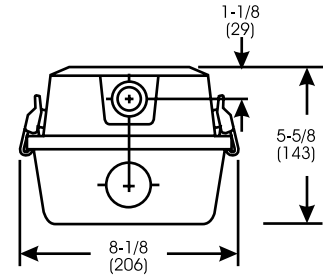
Row installation — Minimum of two hangers required. Recommend 1/2" nipple with union (by others) for DMW.

See ACCESSORIES below for hanging devices.



## DIMENSIONS

Inches (millimeters). Subject to change without notice.



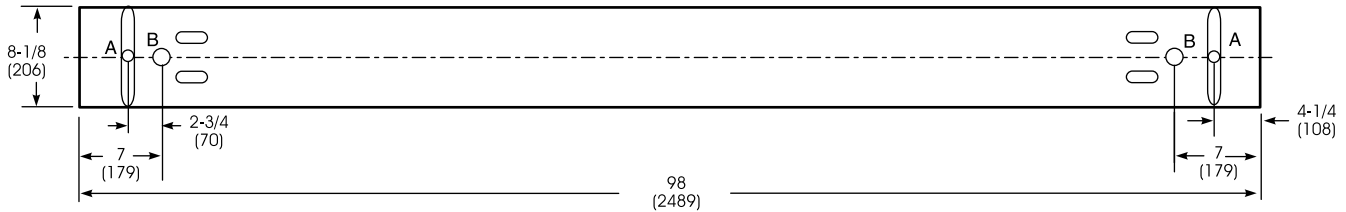
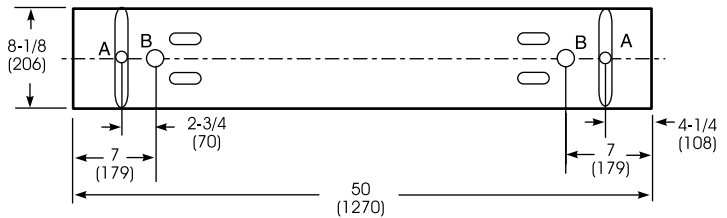
A = 11/16 (17) Dia.

B = 1-1/8 (29) Dia.

Recommended mounting locations (field drilling required)

\*8' fixtures are 5-5/8" deep

4' fixtures are 4-5/8" deep



## PHOTOMETRICS

Calculated using the zonal cavity method in accordance with IESNA LM41 procedure. Floor reflectances are 20%. Lamp configurations shown are typical. Full photometric data on these and other configurations available upon request.

### DM/DMW 1 40

Report LTL 4148

S/MH (along) 1.2 (across) 1.6

Coefficient of Utilization

Ceiling Wall	80%			70%			50%		
	70%	50%	30%	70%	50%	30%	50%	30%	10%
1	81	76	72	78	74	70	69	66	63
2	72	65	59	70	63	57	59	55	50
3	66	57	49	63	55	48	52	46	42
4	60	50	42	58	48	41	46	40	35
5	54	43	36	52	42	35	40	34	29
10	36	25	19	35	25	18	23	18	14

### DM/DMW 2 40

Report LTL 4147

S/MH (along) 1.3 (across) 1.5

Coefficient of Utilization

Ceiling Wall	80%			70%			50%		
	70%	50%	30%	70%	50%	30%	50%	30%	10%
1	72	68	65	70	66	63	63	60	58
2	65	59	54	63	57	53	54	50	47
3	59	52	46	57	50	45	47	43	39
4	54	45	39	52	44	38	42	37	33
5	49	40	33	47	39	33	37	32	28
10	33	23	17	31	23	17	22	17	13

### DM/DMW 2 32

Report LTL 5583

S/MH (along) 1.3 (across) 1.6

Coefficient of Utilization

Ceiling Wall	80%			70%			50%		
	70%	50%	30%	70%	50%	30%	50%	30%	10%
1	82	78	74	80	76	72	71	69	66
2	74	67	61	72	65	60	61	57	53
3	67	58	52	65	57	51	54	48	44
4	61	51	44	59	50	43	47	42	37
5	56	45	38	54	44	37	42	36	31
10	37	26	19	36	25	19	24	19	15

### Zonal Lumens Summary

Zone	Lumens	%Lamp	%Fixture
0-30	447	14.2	18.3
0-40	759	24.1	31.1
0-60	1459	46.3	59.8
0-90	2282	72.4	93.6
90-180	157	5.0	6.4
0-180	2439	77.4	100.0

### Zonal Lumens Summary

Zone	Lumens	%Lamp	%Fixture
0-30	869	13.8	20.3
0-40	1476	23.4	34.4
0-60	2789	44.3	65.0
0-90	4020	63.8	93.7
90-180	272	4.3	6.3
0-180	4293	68.1	100.0

### Zonal Lumens Summary

Zone	Lumens	%Lamp	%Fixture
0-30	884	15.2	19.5
0-40	1511	26.0	33.4
0-60	2883	49.7	63.7
0-90	4260	73.4	94.1
90-180	268	4.6	5.9
0-180	4528	78.1	100.0



### Lithonia Lighting

Acuity Lighting Group, Inc.

Fluorescent

One Lithonia Way, Conyers, GA 30012

Phone: 800-858-7763, Fax: 770-929-8789

In Canada: 1100 50th Ave., Lachine, Quebec H8T 2V3

www.lithonia.com



**Control, Coil Bulb, NEMA 4X Enclosure**  
Line Voltage Coil Bulb Control, Contact  
Current Rating Resistive @ 120VAC 22 Amps,  
Contact Current Rating Resistive @ 240VAC  
22 Amps, Inductive Rating @ 120 VAC 16  
Amps, Inductive Rating @ 240 VAC 8 Amps,  
Sensor Hydraulic Cap, Switch SPDT,  
Temperature Differential 3 to 12 Degrees  
Fahrenheit, Application Heating/Cooling  
Ventilation, Control Range 30-110 Degrees F,  
Dimension 3 1/2 In H X 7 In W X 3 1/4 In D

Brand DAYTON  
Mfr. Model # 4LZ94

#### Tech Specs

- **Item:** Line Voltage Thermostat
- **Type:** Heating/Cooling
- **Switch Type:** SPDT
- **Switch Action:** Open / Close on rise
- **Number of Switches:** 1
- **Control Range (F):** 30 to 110
- **Differential (Deg. F):** 3 to 12 Adj.
- **Sensor Type:** Coil Bulb Hydraulic
- **Color:** Grey
- **Application:** Heating or Cooling
- **Voltage Range:** 120 to 240 VAC
- **Inductive Amps @ 120V:** 16
- **Inductive Amps @ 240V:** 8
- **Full Load Amps @ 120V:** 16
- **Full Load Amps @ 240VAC:** 8
- **Contact Rating Resistive @ 120V (A):** 22
- **Contact Rating Resistive @ 240V (A):** 22

# The Com-Pak Plus

The economical choice for smaller areas



**CADET**  
SAFETY & QUALITY



## Features and Benefits

- Primary and Secondary Thermal Safeguards
  - **NOW WITH** robust, heavy duty high temperature manual power reset
  - Over temperature one-time thermal fuse
- Nichrome coil element for quick heat
- Powder coat paint process eliminates sharp metal edges
- Wall can designed for ease of installation

### General Information:

The Com-Pak Plus is our most popular in-wall fan heater. An economical choice that includes our highly regarded safety components. These heaters are perfect for smaller areas or larger areas needing the dispersed heat created by multiple heaters. Cadet recommends a wall-mounted thermostat for optimum performance, or you may prefer the convenience of an optional built-in thermostat.

### Technical Information:

Fan heaters and thermostats work best when installed on an inside wall. UL requires heater to be placed a minimum distance of 6" from adjacent surfaces and 4½" from the floor. Manufacturer recommends installation 12" from all surfaces. All models 1500 watts or less may be ceiling mounted. A 3' (91.44cm) minimum clearance is recommended for furniture or other objects placed directly in front of heater.

**NOTE:** Manufacturer recommends installing heater assembly after walls are finished. Heater must be cleaned every six months minimum.

### Architectural Information:

Fan forced electric air heaters shall be UL Listed, factory rated at 120V, 208V, and dual field rated from 208V to 240V. A painted 20 gauge wall mounting can with six knockouts and 34 cubic inch wiring compartment shall be provided with each complete heater. Each complete heater shall be of unitized construction and attach to the wall can with a single screw and shall be self-contained and completely separate from the wall mounting can.

Element is of nichrome type wire wrapped on mica insulators with an oversized 16 amp rating at 240V, high temperature manual power reset limit switch and an over-temperature thermal back-up fuse. A two stage centrifugal blower shall be driven by an impedance protected motor. The motor shall be totally isolated from the heating chamber. Metal grill shall be of one piece, 20-gauge construction and finished with a powder coat paint system.

### Ordering Information:

Suffix "T" in model number denotes built-in single pole thermostat. Model numbers without a "T" require a thermostat. Recommended for elevations under 10,000 feet. Complete unit available in white only.

## Carton Details

### Heat Assembly Only Carton

<b>DIMENSIONS</b>	12"W x 7.5"H x 5.25"D
<b>PALLET QTY.</b>	100
<b>CUBE</b>	.27

### Complete Unit Carton

<b>DIMENSIONS</b>	14.375"W x 9.375"H x 5.75"D
<b>PALLET QTY.</b>	96
<b>CUBE</b>	.45



HEATER ASSEMBLY WITH THERMOSTAT



WALL CAN

The Com-Pak Plus



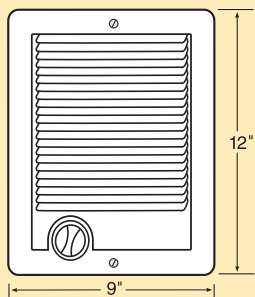
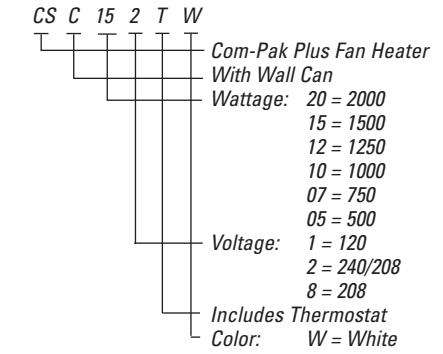
PHONE 360.693.2505  
 FAX 360.694.8668  
 WEB www.cadetco.com

UPC Code			WATTS			AMPS			Wt./Lbs
Part#	Model#	Description	240V	208V	120V	240V	208V	120V	
027418	67507	1 CSC202TW	2000	1500		8.33	7.21		7
027418	67506	4 CSC152TW	1500	1125		6.25	5.41		7
027418	67505	7 CSC102TW	1000	750		4.17	3.61		7
027418	67509	5 CSC151TW			1500			12.5	7
027418	67508	8 CSC101TW			1000			8.33	7
027418	67514	9 CS202	2000	1500		8.33	7.21		3.5
027418	67513	2 CS152	1500	1125		6.25	5.41		3.5
027418	67512	5 CS122	1250	937		5.21	4.5		3.5
027418	67511	8 CS102	1000	750		4.17	3.61		3.5
027418	67510	1 CS072	750	563		3.13	2.71		3.5
027418	67516	3 CS151			1500			12.5	3.5
027418	67515	6 CS101			1000			8.33	3.5
027418	67550	7 CS051			500			4.17	3.5
027418	67517	0 CS208		2000			9.62		3.5
027418	67522	4 CS202T	2000	1500		8.33	7.21		4
027418	67521	7 CS152T	1500	1125		6.25	5.41		4
027418	67520	0 CS122T	1250	937		5.21	4.5		4
027418	67519	4 CS102T	1000	750		4.17	3.61		4
027418	67518	7 CS072T	750	563		3.13	2.71		4
027418	67524	8 CS151T			1500			12.5	4
027418	67523	1 CS101T			1000			8.33	4
027418	67525	5 CS208T		2000			9.62		4

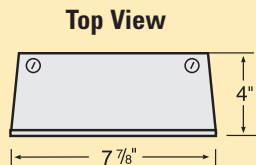
UPC Code			Description	Wt./Lbs
Part#	Model#	Description		
027418	06390	8 CS4MA	4" Surface Mount Metal Adapter C Series, Almond	3.5
027418	06395	3 CS4MW	4" Surface Mount Metal Adapter C Series, White	3.5
027418	67060	1 CC10	C Wall Can Ten Pack	22.5
027418	67061	8 CC	C Wall Can Single Pack	2.5
027418	67063	2 CTT1W	Single Pole Field Mount Thermostat Kit, 17 amp, White	.25
027418	67064	9 CTT2W	Double Pole Field Mount Thermostat Kit, 17 amp, White	.25
027418	67065	6 CTT1A	Single Pole Field Mount Thermostat Kit, 17 amp, Almond	.25
027418	67066	3 CTT2A	Double Pole Field Mount Thermostat Kit, 17 amp, Almond	.25
027418	67067	0 CTP	Tamper Proof Field Mount SP Thermostat Kit, 17 amp	.25
027418	67075	5 CGA	C Grill w/ Parts, Almond	1.5
027418	67079	3 CGW	C Grill w/ Parts, White	1.5
027418	67080	9 CGA10	C Grill Ten Pack w/ Parts, Almond	12.25
027418	67081	6 CGW10	C Grill Ten Pack w/ Parts, White	12.25
027418	67100	4 CAMA	18.5" x 22" Metal Adapter Plate C Series, Almond	3.5
027418	67105	9 CAMW	18.5" x 22" Metal Adapter Plate C Series, White	3.5
027418	67088	5 FWAP	Converts FW Models to C Model, Black	1
027418	67110	3 SAMA	12" x 21.25" Metal Adapter Plate C Series, Almond	2
027418	67115	8 SAMW	12" x 21.25" Metal Adapter Plate C Series, White	2

ACCESSORIES

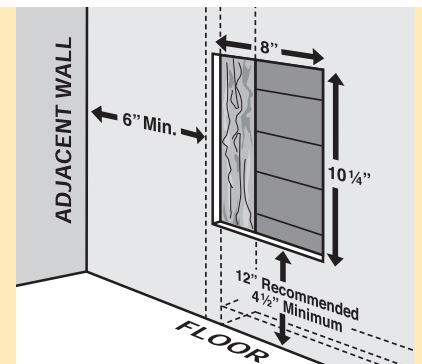
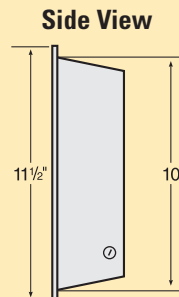
**Model No. Code**



**Grill Dimensions:**  
9"W x 12"H



**Wall Can Dimensions:**  
7 7/8"W x 11 1/2"H x 4"D



**Rough-in Dimensions:**  
8"W x 10 1/4"H x 4"D

## McMASTER-CARR



Fiberglass vaportight lights are rated NEMA 4X, so they're made to perform in dusty, wet, and corrosive environments. CSA certified to UL standards for marine luminaries.

Moisture, dirt, and insects are no match for these lights. All are gasketed to resist moisture, have a heat-resistant glass globe, and are suitable for indoor and outdoor use. Lights have hardwire connections, have female threaded hubs for conduit connections, and operate on 120 VAC.

Fiberglass Vaportight Lights — Incandescent

Wall Mount

Dia 7 1/4" Hgt 12 1/4" Hub Size 3/4" NPT Watt Max 150

McMaster-Carr #14835K94



## FEATURES

### INTENDED USE

Provides minimum of 90 minutes of illumination for rated wattage upon loss of AC power. Unique design for heavy and demanding industrial applications such as manufacturing plants, refineries, chemical plants, wastewater treatment facilities, food processing facilities, breweries, loading docks, and other applications subject to hosedown or industrial conditions. Superior performance lamp heads are ideal for higher mounting heights.

### CONSTRUCTION

**U.S. Patent No. D505,222 - Design patent.** Rugged, heavy-duty, polycarbonate housing is sealed, gasketed, and corrosion-resistant. Unique vertical orientation is perfect for mounting to a pole, column, wall, I-beam or unistrut. Install with epoxy-coated, corrosion-resistant, 12-gauge steel mounting bracket shipped standard. Conduit entry points located at top and on both sides of unit.  
**U.S. Patent No. 6,135,624 - mounting bracket utility patent.** Maintenance is easy with hinged front cover, printed circuit board mounting shelf and battery belt.  
**U.S. Patents pending.**

### LAMPS

**U.S. Patent No. 6,193,395 - lamp head utility patent.** Full range of lamp options available from 9W to 50W in sealed-beam or composite versions of incandescent, krypton or halogen lamps. Composite lamps feature unique field adjustable beam spread (by turning lamp bezel). Standard lamp is 9W krypton for 6V and 12V. Standard lamp is 18W incand. for 24V.

### BATTERY

Sealed, maintenance-free, lead-calcium battery with capacity of 18W to 125W for 90 minutes of emergency operation of 6V, 12V or 24V units.

Premium and Ultimate options offer high-temperature batteries (INDX618, INDX1236, INDX12100 only). UL listed from 0° C to 55° C (Premium) or -40° C to 55° C (Ultimate).

Low voltage disconnect prevents excessively deep discharge that can permanently damage battery.

### ELECTRONICS

Brownout protection is a standard feature of self-diagnostics.

AC/LVD reset prevents battery damage from deep discharge.

Current limiting charger.

Dual voltage input capacity (120/277V).

Thermal protection prevents overheating and charger failure.

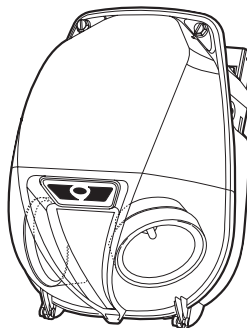
Thermal compensation provides optimum charge voltage relative to ambient temperature.

Catalog Number	
Notes	Type

## NEMA 4X Emergency Lighting Unit

# INDX

6, 12, or 24 Volts  
Sealed Lead-Calcium  
or Ni-Cad Battery



### DIAGNOSTICS (with Select, Premium and Ultimate packages) U.S. Patent No. 6,502,044 - Self-Diagnostics patent.

Test switch provides manual activation of 30 second diagnostic testing (for on demand visual inspection).

Single multi-chromatic LED indicator displays two-state charging, test activation and three-state diagnostic status.

Self-diagnostic testing for five minutes every 30 days and 30 minutes every six months. Diagnostic evaluation of lamp, AC to DC transfer, charging and battery condition.

Load learning capability self-calibrates to DC load at first test, enabling it to detect a lamp failure on future tests. May be re-calibrated at any time by holding down test switch for 15 seconds.

### LISTING

UL Listed. Meets UL 924, UL50, NFPA 101, NFPA 70-NEC, and OSHA illumination standards. NEMA 4, 4X rated. IP66 and NSF Listed.

### WARRANTY

Three-year total customer satisfaction warranty.

## ORDERING INFORMATION

Example: INDX12100 H1212 ULT

Family
6 Volts
<b>INDX618</b> 18 watts
<b>INDX654</b> 54 watts
<b>INDX6100</b> 100 watts
12 Volts
<b>INDX1236</b> 36 watts
<b>INDX1254</b> 54 watts
<b>INDX12100</b> 100 watts <sup>1</sup>
<b>INDX12125</b> 125 watts
24 Volts
<b>INDX24100</b> 100 watts

Housing Color
(blank) Gray
<b>W</b> White

Lamp Type (2 heads)
6 Volts
<u>PAR36 Composite</u>
(blank) 9W/6V krypton
<b>H1206</b> 12W/6V halogen
<b>H2006</b> 20W/6V halogen
12 Volts
<u>PAR36 Composite</u>
(blank) 9W/12V krypton
<b>H1212</b> 12W/12V halogen
<b>H2012</b> 20W/12V halogen
<u>PAR36 Sealed-Beam</u>
<b>H3512S</b> 35W/12V halogen
<b>H5012S</b> 50W/12V halogen

Option Packages
(blank) UL listed to 4X standards.
<b>XTRA<sup>2</sup></b> Extra package features remote test and time delay. UL listed for 10° C to 40° C (50° F to 104° F).
<b>SEL</b> Select package features self-diagnostics, time delay and audible failure indication. UL listed for 10° C to 40° C.
<b>PREM<sup>3</sup></b> Premium package features high temperature ni-cad battery (INDX618 and INDX1236 only) or high ambient lead calcium battery (INDX12100 only), self-diagnostics, time delay, audible failure indication. UL listed for 0° C to 55° C (32° F to 131° F).
<b>ULT<sup>3</sup></b> Ultimate package features heater, thermostat and battery blanket with a high temperature ni-cad battery (INDX618 and INDX1236 only) or a high-ambient lead-calcium battery (INDX12100 only), self-diagnostics, time delay and audible failure indication. UL listed for -40° C to 55° C (-40° F to 131° F).

### Accessories

Order as separate items.

**ELA RTT** Remote test transmitter<sup>2</sup> (for use with XTRA package, remote test option)

**ELA WGLG** Wireguard - large

**ELA BS** Banding strap

**ELA IND CM2** Ceiling mount kit for INDX654/1236/1254

24 Volts
<u>PAR36 Composite</u>
(blank) 18W/24V incand.
<b>H2024</b> 20W/24V halogen
<u>PAR36 Sealed-Beam</u>
<b>N5024S</b> 50W/24V incand.

### NOTES:

- 1 INDX12100 available with either the PREM or ULT package only.
- 2 Must order a Remote transmitter (ELA RTT) sold separately. One per job required.
- 3 Only available on INDX618, INDX1236 and INDX12100.

# INDX INDURA NEMA 4X Emergency Lighting Units, 6/12/24 Volts

## SPECIFICATIONS

### ELECTRICAL

#### Primary Circuit

Type	AC Input		Output Watts	Output Volts	Watts Output			
	Volts	Amps			1-1/2hr.	2hr.	3hrs.	4hrs.
INDX618	120	.093	19.56	6	18	13.5	9	6
	277	.041	19.11					
INDX654	120	.171	20.64	6	54	40	27	20
	277	.073	20.78					
INDX6100	120	.144	20.52	6	100	75	50	37.5
	277	.062	20.22					
INDX1236	120	.174	18.24	12	36	27	18	13
	277	.078	17.73					
INDX1254	120	.174	20.88	12	54	40	27	20
	277	.078	21.61					
INDX12100 <sup>4</sup>	120	.160	20.88	12	100	75	50	37.5
	277	.072	20.55					
INDX12125	120	.160	20.88	12	125	93	62	46
	277	.072	20.50					
INDX24100	120	.33	39.6	24	100	75	50	37
	277	.15	41.55					

### BATTERY

#### Nickel-Cadmium

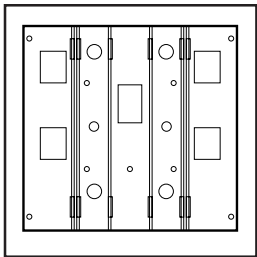
Voltage	Shelf life	Expected life <sup>1</sup>	Maintenance	Operating temperature <sup>2</sup>
6/12	3 yrs.	10 yrs.	none <sup>3</sup>	32°-100°F (0°-37.8°C)

#### Lead-Calcium

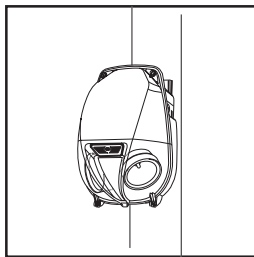
Voltage	Shelf life	Expected life <sup>1</sup>	Maintenance	Operating temperature <sup>2</sup>
6/12/24	6 mos.	5-8 yrs.	none <sup>3</sup>	60°-90°F (16°-32°C)

- Based on normal room temperatures and conditions.
- Optimum ambient temperature range where unit will provide rated capacity for 90 minutes. Higher and lower temperatures affect life and capacity.
- Periodic system status test recommended.

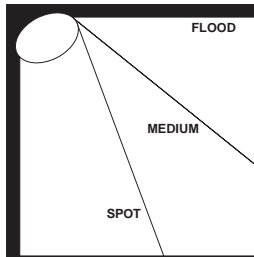
## KEY FEATURES



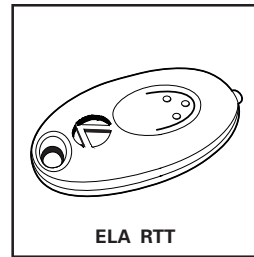
12-gauge epoxy-coated steel mounting bracket included with each unit.



Vertical orientation for pole or column mounting.



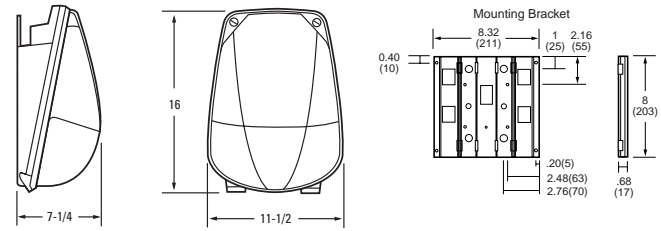
Field-adjusted beam pattern for composite lamps.



Order remote transmitter separately.

## MOUNTING

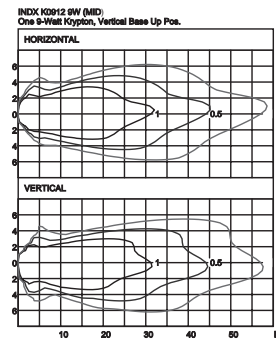
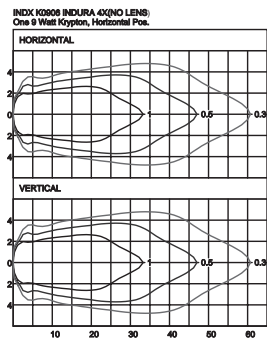
Dimensions : Measured in inches (millimeters).



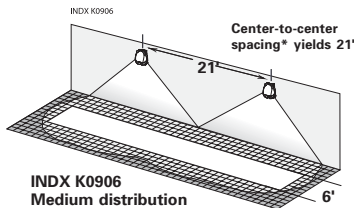
Weight: Measured in pounds (kilograms).

INDX618 - 16 lbs.	INDX1236 - 20 lbs.	INDX24100 - 30 lbs.
INDX654 - 20 lbs.	INDX1254 - 20 lbs.	
INDX6100 - 28 lbs.	INDX12100 - 36.5 lbs.	
	INDX12125 - 30 lbs.	

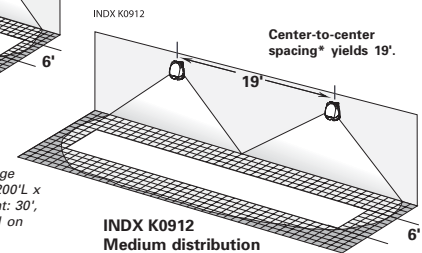
## PHOTOMETRICS



## PERFORMANCE DIAGRAMS



INDX K0906  
Medium distribution



INDX K0912  
Medium distribution

\*Note: Meets Life Safety Code standard minimum illuminance of 0.1 FC and average illuminance of 1.0 FC. Assumes space of 200'L x 200'W, mounting height: 16', ceiling height: 30', and reflectances: 10/10/10. Analysis based on independently tested photometrics.

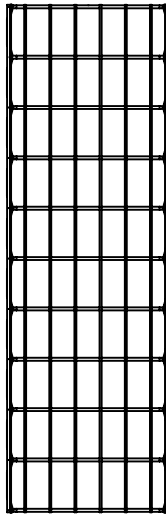


# CF 105 CABLOFIL CABLE TRAY

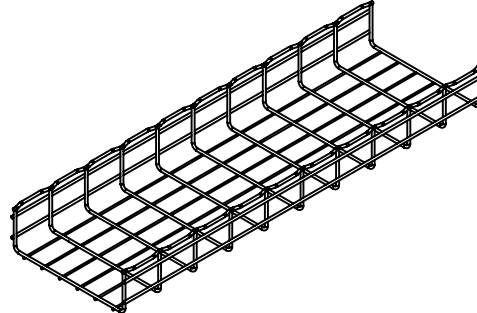
# CABLOFIL®

INNOVATORS IN CABLE MANAGEMENT

8319 State Route 4  
 Mascoutah IL 62258  
 Phone: 800-658-4641  
 618-566-3230  
 Fax: 618-566-3250  
[www.cablofil.com](http://www.cablofil.com)



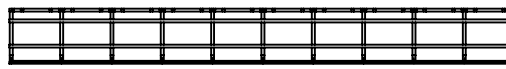
TOP



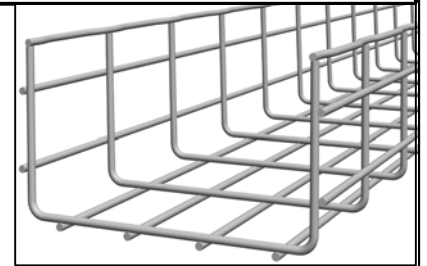
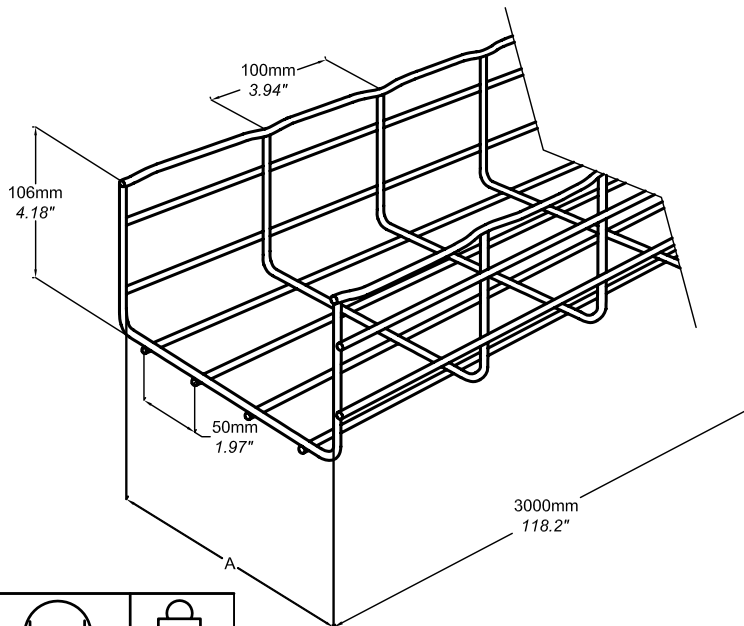
ISOMETRIC



FRONT



SIDE



in mm	lb

CF105 100	3.937	100	9.0
CF105 150	5.904	150	10.2
CF105 200	7.872	200	13.4
CF105 300	11.81	300	21.2
CF105 400	15.75	400	22.8
CF105 450	17.71	450	25.9
CF105 500	19.68	500	27.5
CF105 600	23.62	600	30.4

**EZ GC 304L 316L**

	Material	Finish
EZ	Carbon Steel ASTM A510 Grade 1008	Electroplated Zinc, ASTM B633
GC	Carbon Steel ASTM A510 Grade 1008	Hot-Dip Galvanized ASTM A123
304L	AISI TYPE 304L	Passivated ASTM A 380
316L	AISI TYPE 316L	Passivated ASTM A 380