



PO BOX 147 ODELL, OR 97044 TEL: (541) 354-3222 FAX: (541) 354-3366

LADWP - Lower Owens River Pump Building

Model #ME4-240-2151-LP-SEATTLE Modular Enclosure, per drawing #2151, to include the following:

Item	Qty	Description
1	(1)	20' W X 40' L X 11'H, fiberglass enclosure, Power Design #ME3-240-480, Seattle in color, with 1/4" fiberglass wall thickness nominal, polyurethane foam insulation, R-14 on walls and R-19 on roof with fiberglass skin coat, white interior, 3" internal flange for mounting on concrete slab, 9' internal wall height, with internal roof support truss frame, galvanized steel.
2	(2)	Single man door, 36" W x 84" H, insulated, R-14, double wall fiberglass with stainless steel door jamb, watertight with gasket, three point panic hardware with keyed cylinder lock, pneumatic door closer, threshold plate, "DANGER HIGH VOLTAGE" sign, and 10" x 10" safety lexan window.
3	(1)	Double equipment door, 72" W x 96" H, insulated, R-14, double wall fiberglass with stainless steel door jamb, watertight with gasket, three point latch hardware, threshold plate, "DANGER HIGH VOLTAGE" sign, and (2) 10" x 10" safety lexan windows



PO BOX 147 ODELL, OR 97044 TEL: (541) 354-3222 FAX: (541) 354-3366

LADWP - Lower Owens River Pump Building

- 4 (2) Air conditioner, 480V, 3 phase, 3 Ton, 35,000 BTUH, Marvair Compac I, catalog #AVP36ACD00N including:
 - a) Extreme Desert Duty Package
 - b) Protective Condenser and Evaporator Coil Coating
 - c) Lead/lag control for above A/C units for operation of a redundant air conditioning system, catalog #LL357A1

- 5 (1) Distribution panel, 480V, three phase, NEMA 1, w/100A main breaker, (2) 15A-3P & (1) 15A-2P breakers, Cutler-Hammer PRL 2A series

- 6 (1) Transformer, 5KVA, 480-120/240VAC, dry type, 1 phase, Cutler-Hammer #S20N11S05N

- 7 (1) Distribution panel 120/240V, single phase, NEMA 1, w/50A sub feed breaker & (4) 20A-1P breakers, Cutler-Hammer BR series



PO BOX 147 ODELL, OR 97044 TEL: (541) 354-3222 FAX: (541) 354-3366

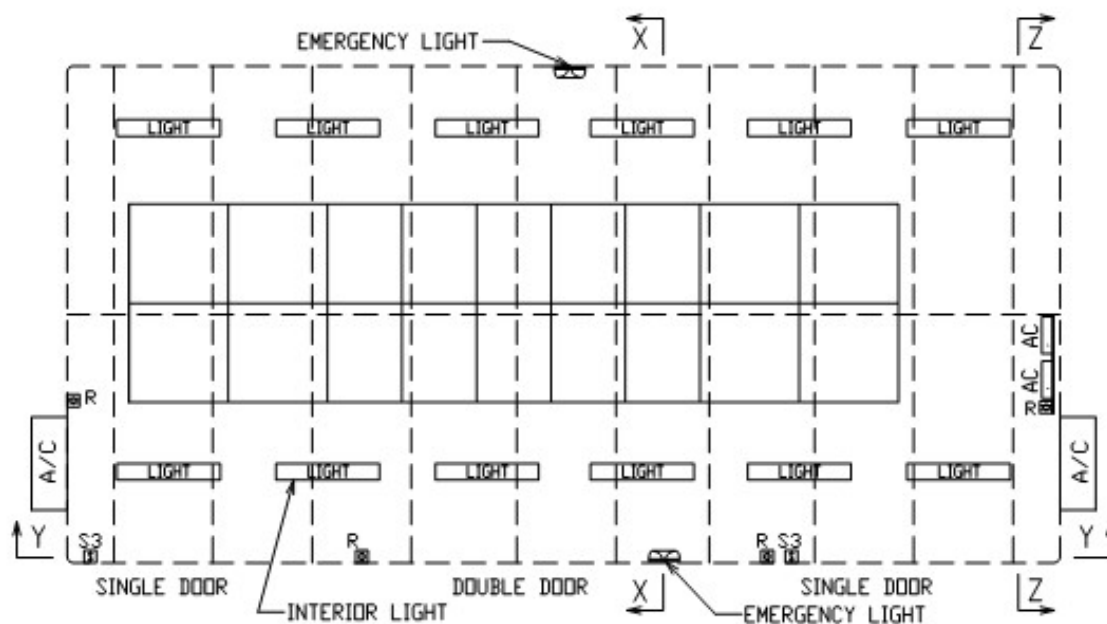
LADWP - Lower Owens River Pump Building

8 (lot) Misc. equipment

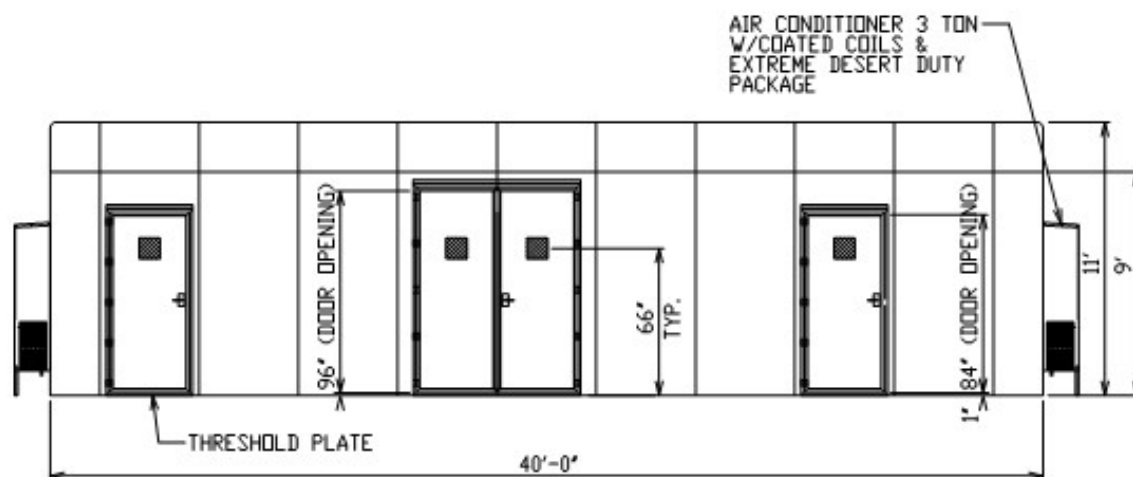
- (12) Interior fluorescent lights, 34W-2 tube-120V,
Lithonia #DMW 2 32 MVOLT
- (2) Light switch, 3-way, 20A, with SS cover plate
- (4) GFCI duplex receptacles, NEMA 5-20R, 20A, with SS cover plate
- (2) Emergency light, Lithonia #INDX1254
- (lot) EMT conduit and wiring

Notes:

- 1) Unit to be shipped in two halves with shipping supports. Field seamed and bolted together by others.
Bolts and sealant to be provided.
- 2) Stainless steel ridge cap with screws provided for top seam.
- 3) Customer to supply wedge anchors to secure building to concrete pad.



PLAN VIEW



FRONT VIEW

ORDERING INFORMATION

MODEL	ME 4 - 240 - 2151 - L1 - SEATTLE
NUMBER OF DOORS	
NOMINAL WIDTH	
DETAILS AS SHOWN ON THIS DRAWING	
	L1 - PROVISION FOR PADLOCKING ONLY L2 - PROVISION FOR PADLOCKING & PENTA HEAD BOLT L4 - PROVISION FOR PADLOCKING, PENTA HEAD BOLT & INNER DOORS

NOTE

1. MATERIAL:

- 1) FIBERGLASS OUTER LAMINATE 1/4" NOMINAL THICKNESS, FOAM BOARD, R-19 ON ROOF R-14 ON WALLS WITH 1/8" FIBERGLASS SKIN LAMINATE
- 2) EXTERIOR UV STABILIZED GELCOAT - 14 MIL NOMINAL THICKNESS LIGHT GRAY - WHITE INTERIOR
- 3) FIRE RETARDANT - DOES NOT SUPPORT COMBUSTION
- 4) STAINLESS STEEL HARDWARE

2. STANDARDS:

- 1) CONFORMS TO ANSI C57.12.28, PADMOUNT EQUIPMENT ENCLOSURE INTEGRITY STANDARD
- 2) CERTIFIED TEST DATA OF ASTM STRUCTURAL STANDARDS AVAILABLE UPON REQUEST

3. DESIGN SPECIFICATIONS:

- 1) DESIGN CODE
2009 IBC - CATEGORY IV STRUCTURE
- 2) DESIGN
WIND SPEED - 100 MPH, EXPOSURE - C,
IMPORTANCE - 1.15
- 3) SEISMIC DESIGN
SITE CLASS - D, $S_s = 1.25$, $S_1 = 0.60$
IMPORTANCE - 1.5
- 4) GRAVITY LOAD
GRAVITY LOAD - 7 PSF
ROOF LIVE LOAD (SNOW) - 30 PSF
IMPORTANCE - 1.2

CATALOG NO: ME4-240-2151-L1-SEATTLE

FIBERGLASS MODULAR ENCLOSURE

20 FT WIDE x 11 FT HIGH x 40 FT LONG

TWO SINGLE & ONE DOUBLE DOOR AIR CONDITIONER AC PANELS, & LIGHTS



POWER DESIGN INC.

ODELL, OREGON

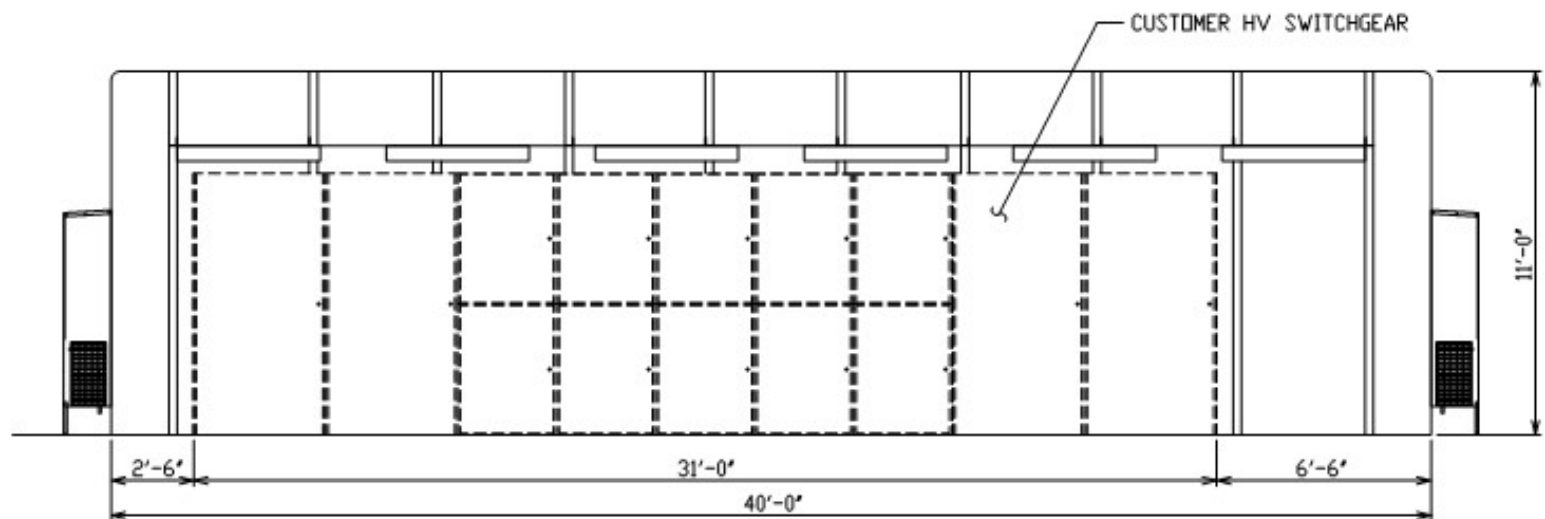
DRAWN
RB

PAGE
1 OF 6

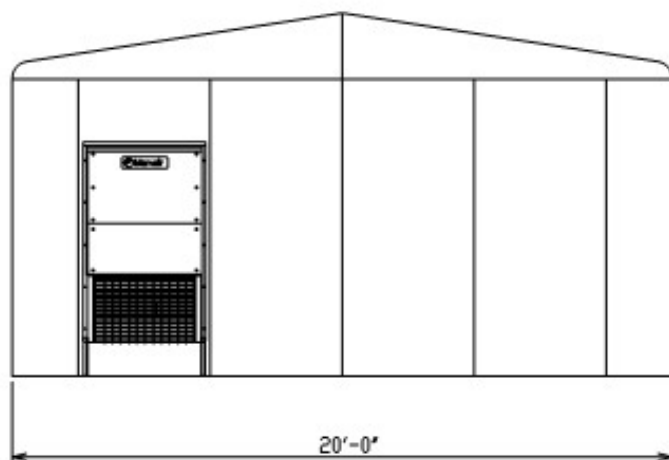
DATE
6-16-11

DRAWING NO.
2151-R5

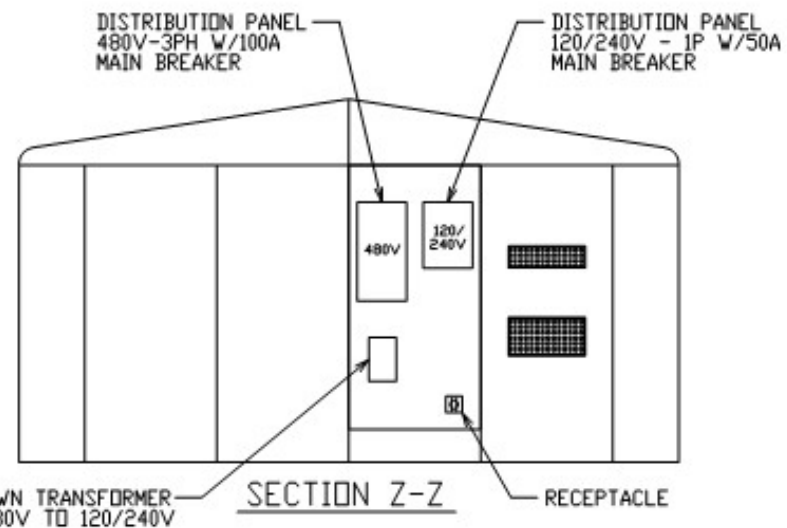
FILE NO:



SECTION Y-Y



END VIEW



SECTION Z-Z

CATALOG NO: ME4-240-2151-L1-SEATTLE

FIBERGLASS MODULAR ENCLOSURE

20 FT WIDE x 11 FT HIGH x 40 FT LONG

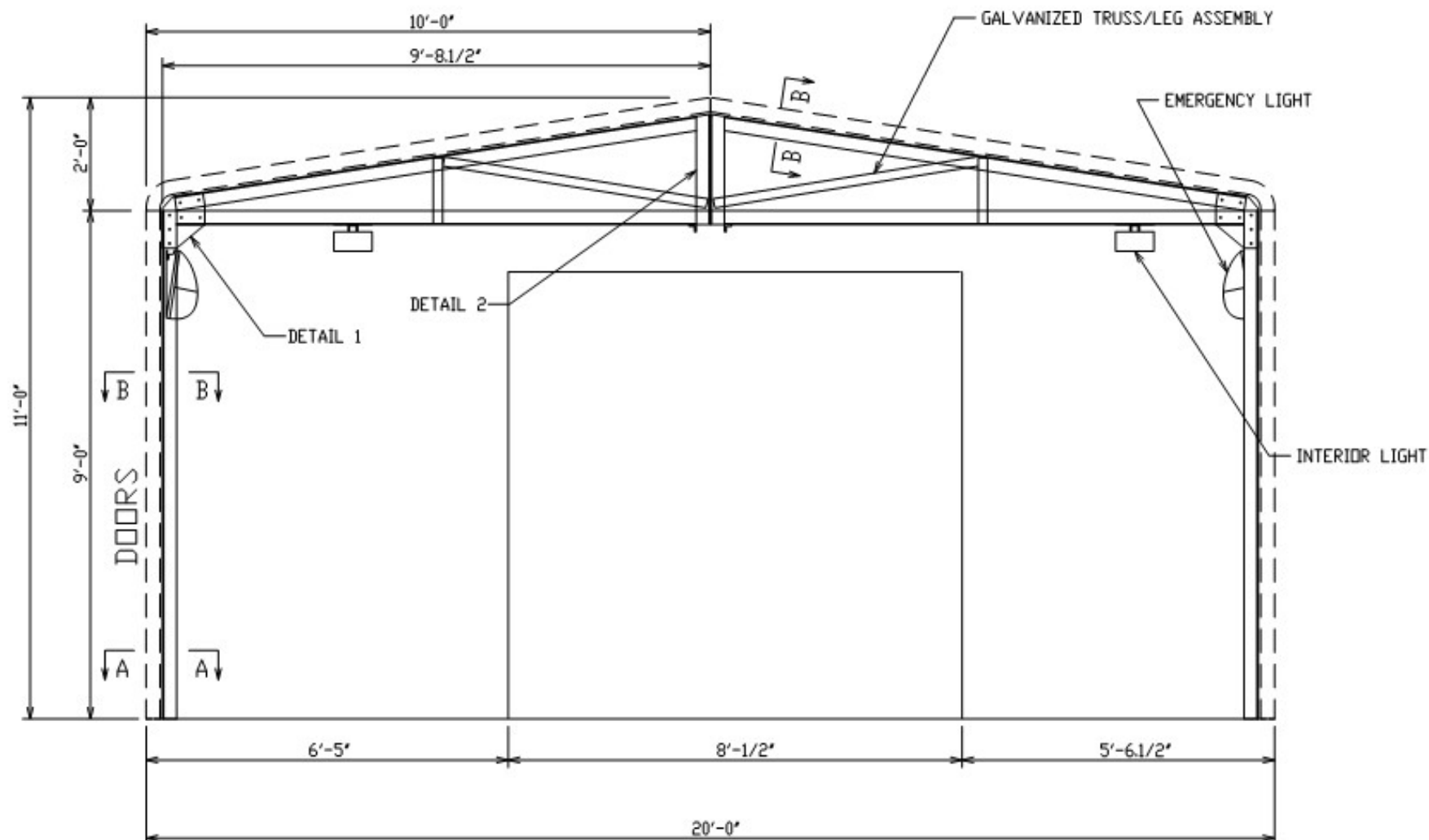
TWO SINGLE & ONE DOUBLE DOOR AIR CONDITIONER AC PANELS, & LIGHTS



POWER DESIGN INC.

ODELL, OREGON

FILE NO:	DRAWN RB	PAGE 2 OF 6	DATE 6-16-11	DRAWING NO. 2151-R5
----------	-------------	----------------	-----------------	------------------------



CATALOG NO: ME4-240-2151-L1-SEATTLE

FIBERGLASS MODULAR ENCLOSURE

20 FT WIDE x 11 FT HIGH x 40 FT LONG

SECTION DETAIL



POWER DESIGN INC.

ODELL, OREGON

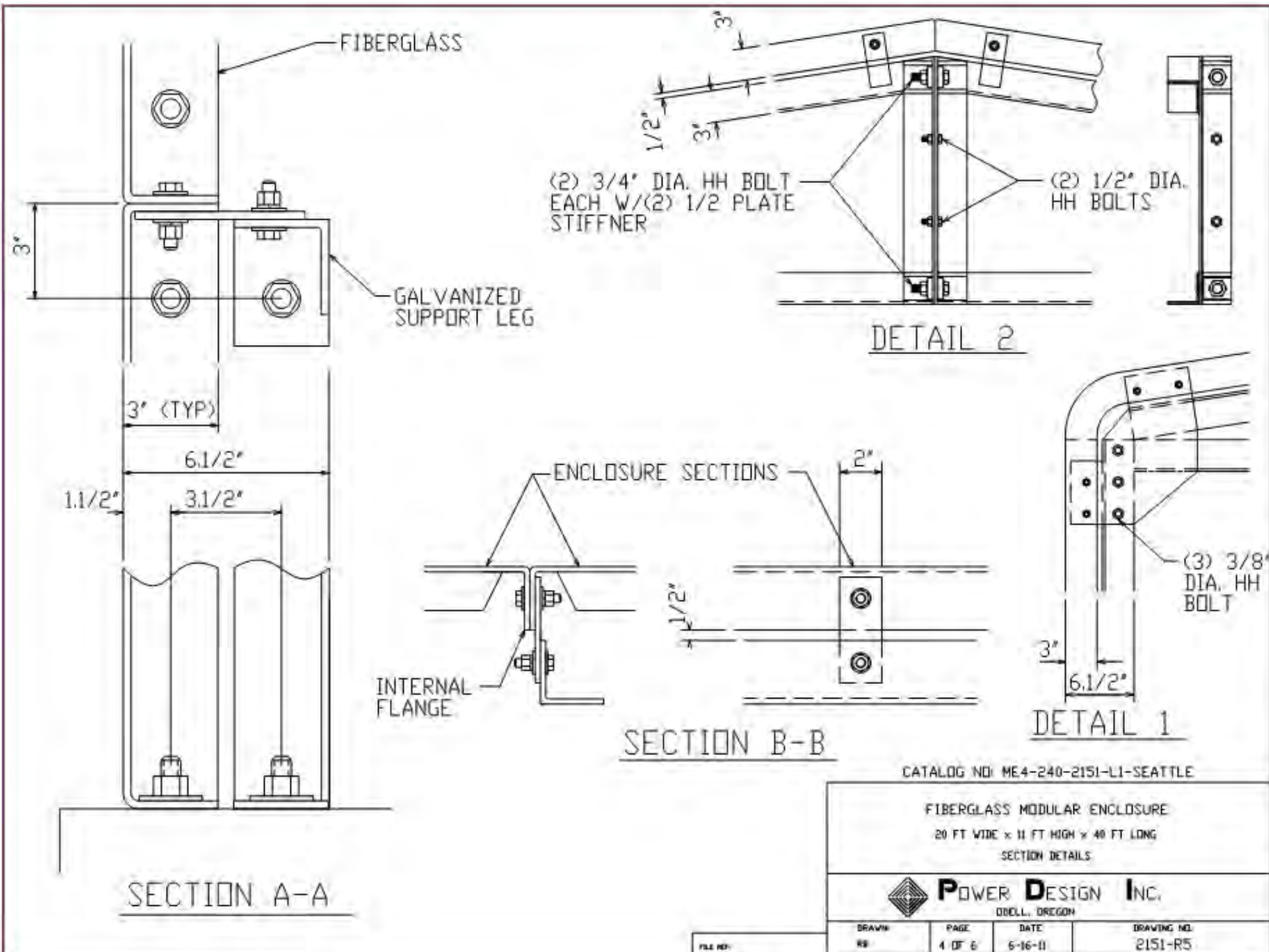
DRAWN
RB

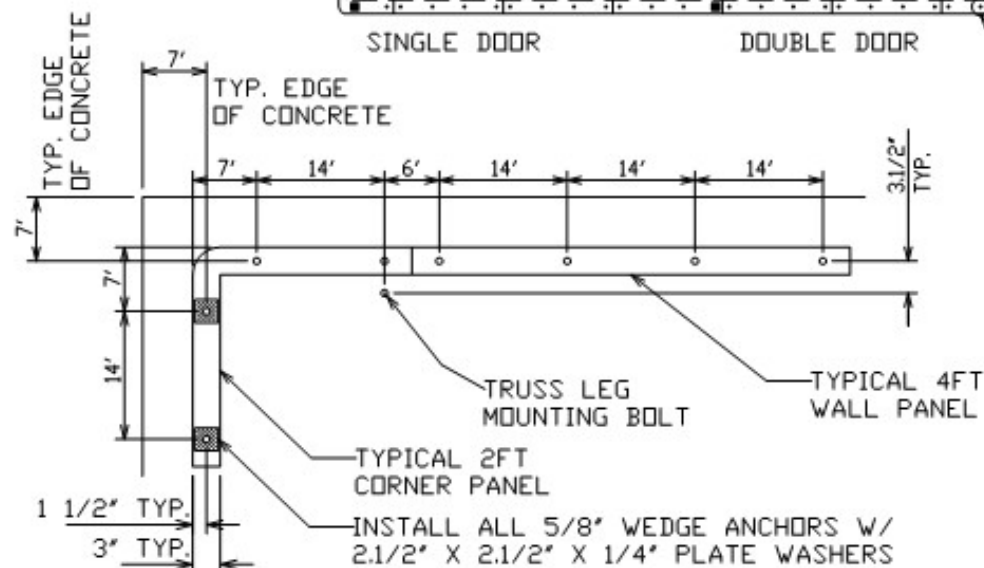
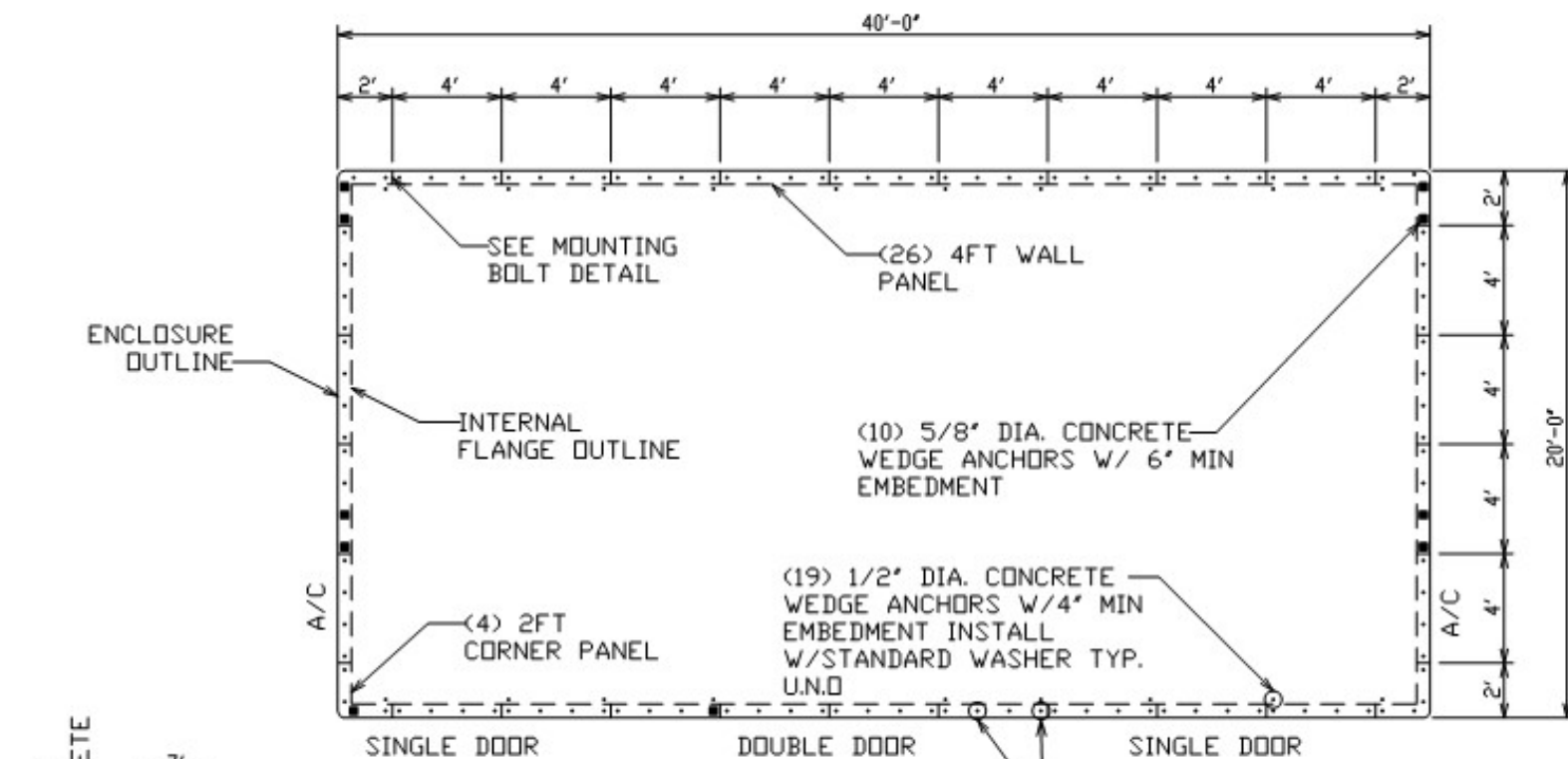
PAGE
3 OF 6

DATE
6-16-11

DRAWING NO.
2151-R5

FILE REF:





FLANGE & TRUSS MOUNTING BOLT DETAIL

TYP. 4' PANEL: ANCHOR W/ (2) 1/2" DIA. CONCRETE WEDGE ANCHORS W/ 4" MIN EMBEDMENT INSTALL W/ STANDARD WASHER TYP. U.N.O

CATALOG NO: ME4-240-2151-L1-SEATTLE

FIBERGLASS MODULAR ENCLOSURE
20 FT WIDE x 11 FT HIGH x 40 FT LONG
PAD DETAILS



POWER DESIGN INC.

ODELL, OREGON

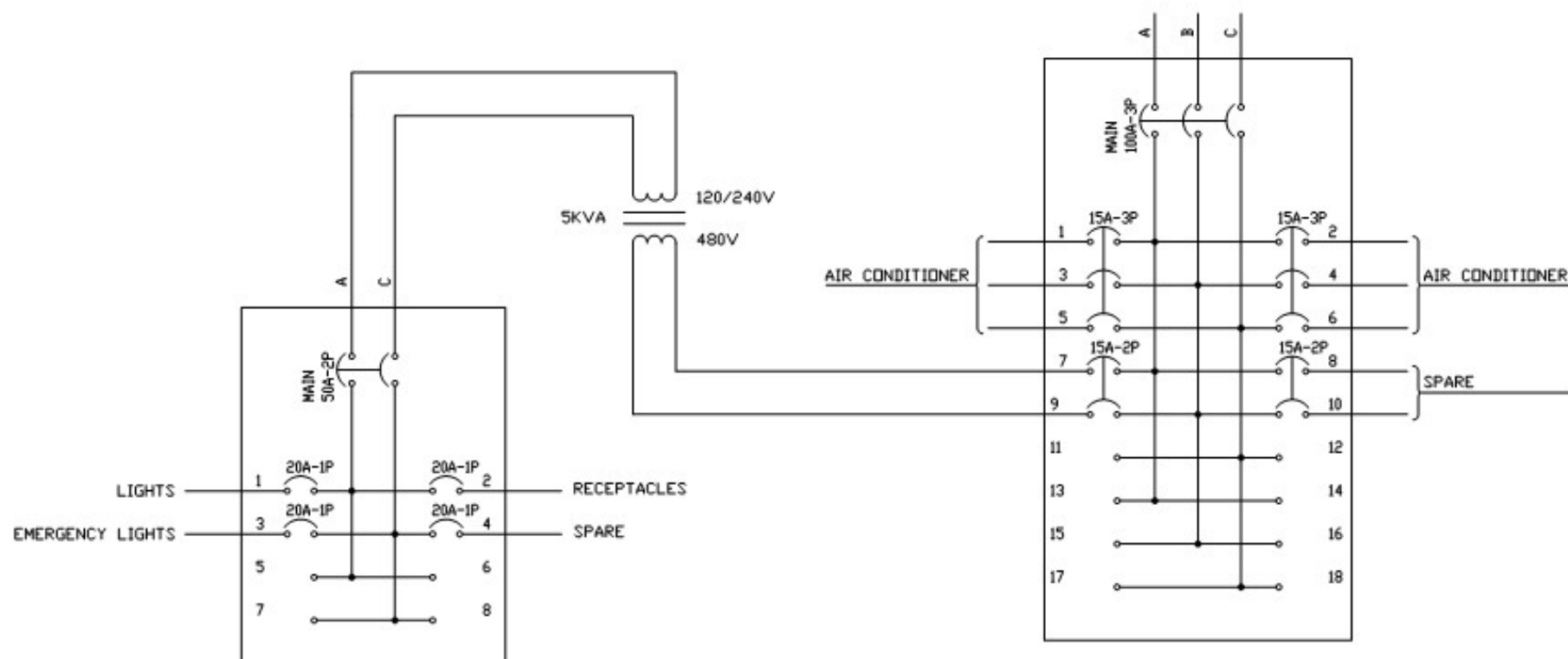
DRAWN
RB

PAGE
5 OF 6

DATE
6-16-11

DRAWING NO.
2151-R5

FILE NO:



AC PANEL BOARD
 NEMA 1 - SURFACE MOUNT - 50A MAIN
 120/240VAC - 3W - 10 KAIC

AC PANEL BOARD
 NEMA 1 - SURFACE MOUNT - 100A MAIN
 480V - 4W - 10 KAIC

NOTE:

- 1) ALL CONDUIT TO BE 1/2" EMT. UNLESS NOTED
- 2) ALL WIRE TO BE #12 THHN, BLACK-PHASE, WHITE-NEUTRAL, GREEN-GROUND. UNLESS NOTED

CATALOG NO: ME4-240-2151-L1-SEATTLE

FIBERGLASS MODULAR ENCLOSURE
 20 FT WIDE x 11 FT HIGH x 40 FT LONG
 AC PANEL



POWER DESIGN INC.
 ODELL, OREGON

DRAWN
RB

PAGE
6 OF 6

DATE
6-16-11

DRAWING NO.
2151-R5

FILE REF:













