



PO BOX 147 ODELL, OR 97044 TEL: (541) 354-3222 FAX: (541) 354-3366

2/06/2012

Clallam County PUD #1 – LAIRD’S CORNER SUBSTATION

Model #ME2-192-2743-PH-LG Modular Enclosure, per drawing #2743, to include the following:

Item	Qty	Description
1	(1)	16' W X 20' L X 11'H, fiberglass enclosure, Power Design #ME2-192-240, light gray in color, with ¼" fiberglass wall thickness nominal, polyurethane foam insulation, R-19 on walls and roof with fiberglass skin coat, white interior, 3" internal flange for mounting on concrete slab, 9' internal wall height, with internal roof support truss frame, galvanized steel.
2	(2)	Single man door, 36" W x 84" H, insulated, R-11, double wall fiberglass with stainless steel door jamb, stainless steel panic hardware with keyed cylinder lock, pneumatic door closer, threshold plate, Apex #2108x4908AxRHRBx630
3	(1)	DC Load Center, 48 VDC, 100 A Main Breaker, 10 KAIC, 30 circuit, surface mounted NEMA 1 enclosure, ground bar, with (10) 30A-2P breaker, (1) 20A-2P breaker and (1) 15A-2P breaker, alum bus, C-H type Pow-R-Line 2A
4	(1)	AC Load Center, 120/240 VAC, 100 A Main Breaker, 10 KAIC, 30 circuit, surface mounted NEMA 1 enclosure, ground & neutral bar, with branch breakers: (6) 40A-2P, (1) 35A-2P, (1) 30A-2P, (1) 20A-2P, and (10) 20A-1P, alum bus, C-H type Pow-R-Line 1A
5	(1)	Air conditioner, 240V, 1 phase, 2 ½ Ton, 30,000 BTUH, with 5KW electric heat, with non-programmable thermostat and supply/return grilles, gray color, type Compac I, Marvair #AVPA30ACA050NU



PO BOX 147 ODELL, OR 97044 TEL: (541) 354-3222 FAX: (541) 354-3366

- 6 (lot) Cable tray, wire type, 18"W x 4"H, with ceiling and wall supports, Cablofil #CF 105 450 EZ
- 7 (1) Exhaust fan, 500CFM, fiberglass shutter, 10" x 10", 120VAC, totally enclosed motor, gelcoated gray, Grainger #1BLH6
- 8 (1) Intake louver, combination fixed blade and adjustable damper with motor, 120VAC, 18" x 18", aluminum, McMaster-Carr #1999K81 and Grainger #2C831
- 9 (lot) Misc. equipment
 - (6) Interior fluorescent lights, 32W-2 tube-120V, enclosed, Lithonia #DMW 2 32 MVOLT GEB10IS
 - (2) Light switch, 3-way, 20A, interior lights
 - (6) GFCI duplex receptacle, 20A, interior
 - (4) GFCI duplex receptacle, 20A, exterior
 - (1) Eyewash station, Grainger #1KW77
 - (1) Fire extinguisher, Grainger #4XP83
 - (1) First aid kit, Grainger #4EY89
 - (1) Eyewash solution, Grainger #3MY50
 - (2) Emergency light, 54W, Grainger #4LB91
 - (2) Exterior Light, 70W HPS, Grainger #5MM59
 - (1) Smoke alarm, Kidde #i5000
 - (1) Smoke alarm relay, Kidde #SM120X
 - (1) Heat detector, Kidde #HD135F
 - (2) Door alarm contact, Omron #ZE-NA2-2S
 - (1) Fan timer, digital with 6 on/off settings per day, Intermatic #ST01C
 - (lot) Ground bar, ¼ x 1 copper, inside perimeter
 - (lot) Ground cable, 4/0 stranded, inside wireway
 - (2) Ground tails, 4/0 stranded, thru to outside
 - (lot) EMT conduit and copper wiring



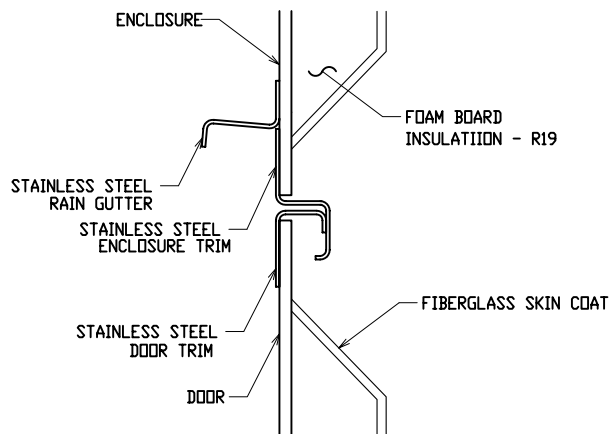
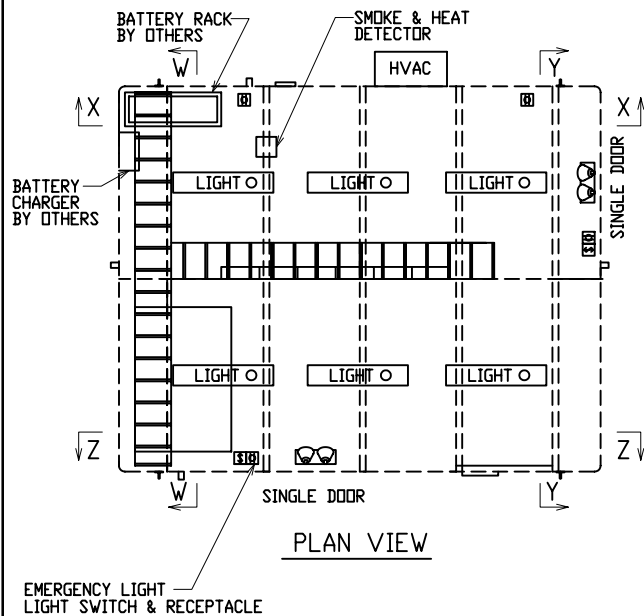
PO BOX 147 ODELL, OR 97044 TEL: (541) 354-3222 FAX: (541) 354-3366

Notes:

- 1) Unit to be shipped in two halves with shipping supports. Field seamed and bolted together by others. Bolts and sealant to be provided.
- 2) Stainless steel ridge cap with screws provided for top seam.
- 3) Customer to supply wedge anchors to secure building to concrete pad.
- 4) Cooling and heating calculations were based on maintaining a 70 deg. F temperature inside the building.

Warranty: LIMITED ONE YEAR WARRANTY

Seller warrants that all products sold by it will be free of defects in material and workmanship under normal use and service for a period of one (1) year after the date of shipment by Seller. In addition, Seller warrants the fiberglass laminate against degradation of strength under normal use and service for a period of twenty five (25) years after the date of shipment by Seller. **In addition, the building shall be guaranteed weather tight and the fiberglass laminate free from cracking, checking, peeling, flaking, blistering, and loss of adhesion for a period of twenty (20) years after the date of final acceptance.** Seller's obligation under this warranty is limited to repair or replacing, at its option, any goods, which upon inspection by Seller shall disclose to Seller's satisfaction to have been defective in material or workmanship, excluding, however, expenses associated with removal or reinstallation of the products, such as transportation, labor, and the like.



SECTION C-C

ORDERING INFORMATION:

MODEL ME 2 - 192 - 2743 - PH - LG
 NUMBER OF DOORS 2
 NOMINAL WIDTH 16'-0"
 DETAILS AS SHOWN ON THIS DRAWING
 COLOR LG - LIGHT GRAY
 WG - LIGHT GREEN
 MG - MUNSELL GREEN
 OTHER COLORS AVAIL. CONSULT FACTORY
 PANIC HARDWARE

NOTE

1. MATERIAL:

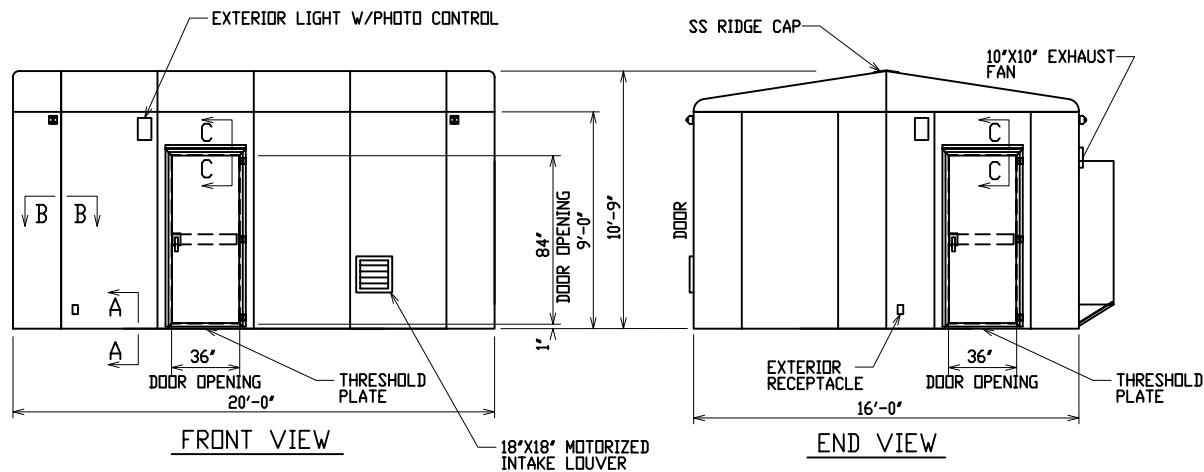
- 1) FIBERGLASS OUTER LAMINATE 1/4" NOMINAL THICKNESS, FOAM BOARD, R-19 WITH 1/8" FIBERGLASS SKIN LAMINATE
- 2) EXTERIOR UV STABILIZED GELCOAT - 14 MIL NOMINAL THICKNESS LIGHT GRAY - WHITE INTERIOR
- 3) FIRE RETARDANT - DOES NOT SUPPORT COMBUSTION
- 4) STAINLESS STEEL HARDWARE
- 5) ESTIMATED WEIGHT - 6500 POUNDS

2. STANDARDS:

- 1) CONFORMS TO ANSI C57.12.28, PADMOUNT EQUIPMENT ENCLOSURE INTEGRITY STANDARD
- 2) CERTIFIED TEST DATA OF ASTM STRUCTURAL STANDARDS AVAILABLE UPON REQUEST

3. DESIGN SPECIFICATIONS:

- 1) DESIGN CODE
2009 IBC - CATEGORY IV STRUCTURE
- 2) DESIGN
WIND SPEED - 100 MPH, EXPOSURE - C, IMPORTANCE - 1.15
- 3) SEISMIC DESIGN
SITE CLASS - D, S_s - 1.25, S_1 - 0.60
IMPORTANCE - 1.5
- 4) GRAVITY LOAD
GRAVITY LOAD - 7 PSF
ROOF LIVE LOAD (SNOW) - 30 PSF
IMPORTANCE - 1.2



FIBERGLASS MODULAR ENCLOSURE

16 FT WIDE x 10 FT 9 IN HIGH x 20 FT LONG

TWO SINGLE DOOR AC & DC PANELS LIGHTS & RECEPTACLES



POWER DESIGN INC.

ODELL, OREGON

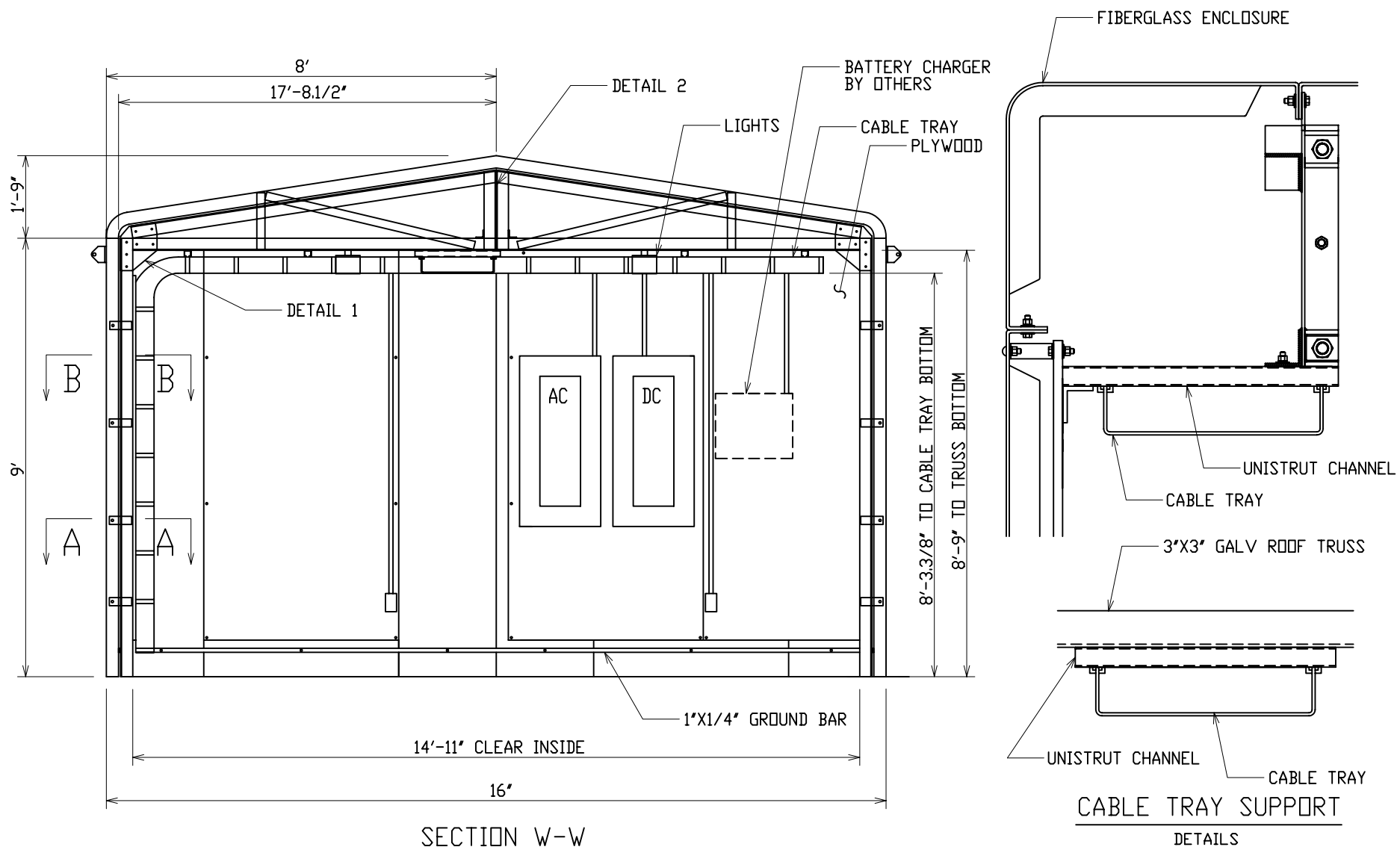
DRAWN:
RB

PAGE
1 OF 12

DATE
2-7-12

DRAWING NO.
2743

FILE REF:



FIBERGLASS MODULAR ENCLOSURE
 16 FT WIDE x 10 FT 9 IN HIGH x 20 FT LONG
 SECTION W-W WALL DETAILS



POWER DESIGN INC.
 ODELL, OREGON

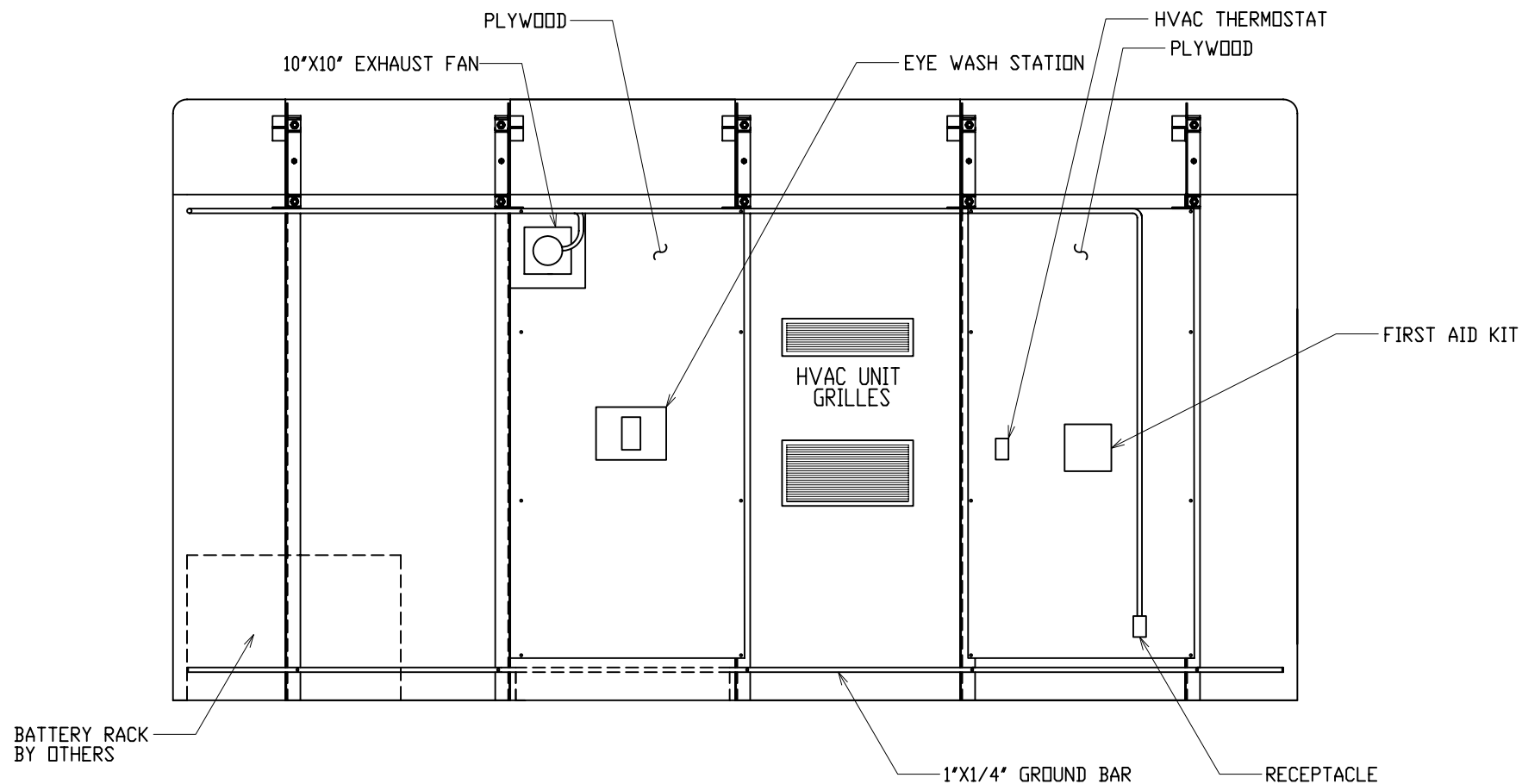
DRAWN:
RB

PAGE
2 OF 12

DATE
2-7-12

DRAWING NO.
2743

FILE REF:



SECTION X-X

FIBERGLASS MODULAR ENCLOSURE
 16 FT WIDE x 10 FT 9 IN HIGH x 20 FT LONG
 SECTION X-X WALL DETAILS



POWER DESIGN INC.
 ODELL, OREGON

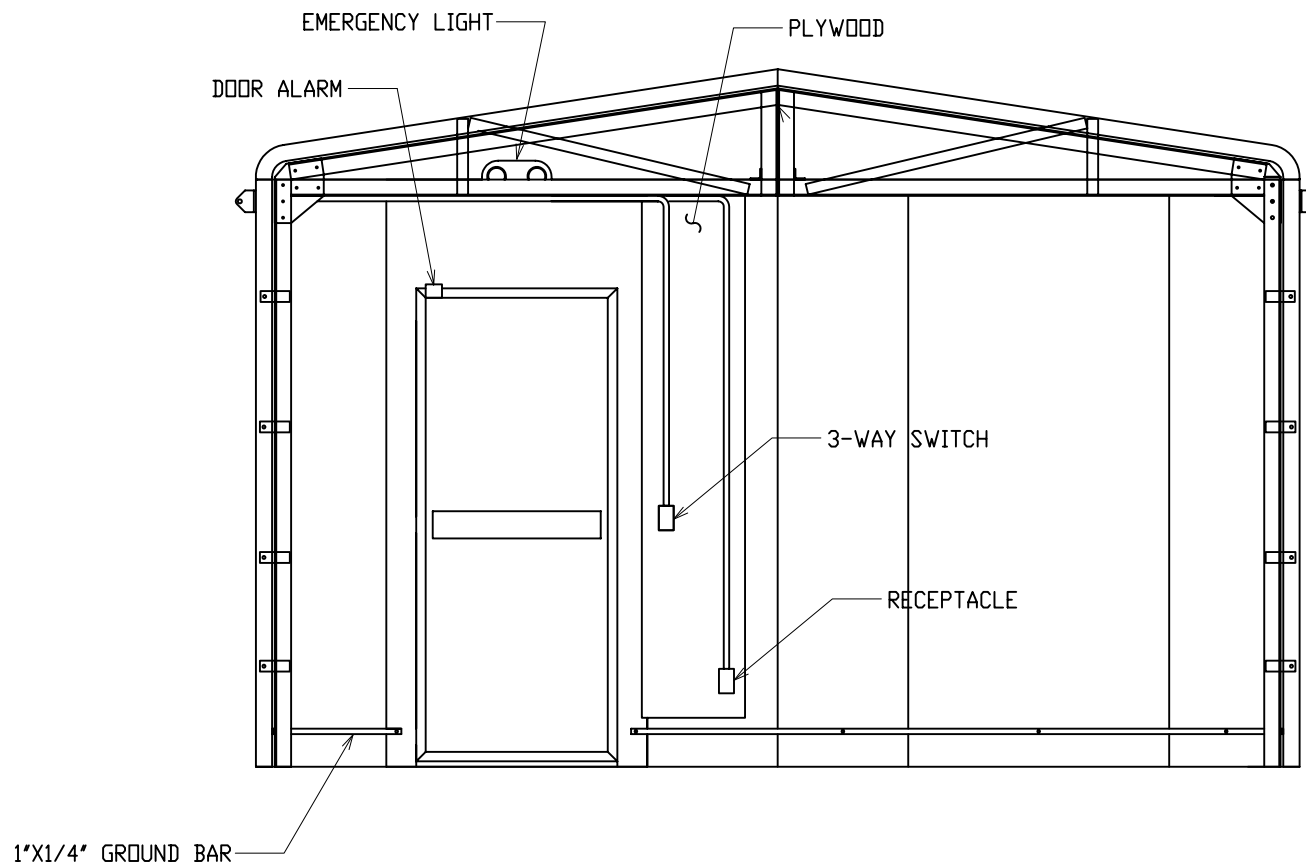
DRAWN:
 RB

PAGE
 3 OF 12

DATE
 2-7-12

DRAWING NO.
 2743

FILE REF:



SECTION Y-Y

FIBERGLASS MODULAR ENCLOSURE
 16 FT WIDE x 10 FT 9 IN HIGH x 20 FT LONG
 SECTION Y-Y WALL DETAILS



POWER DESIGN INC.
 ODELL, OREGON

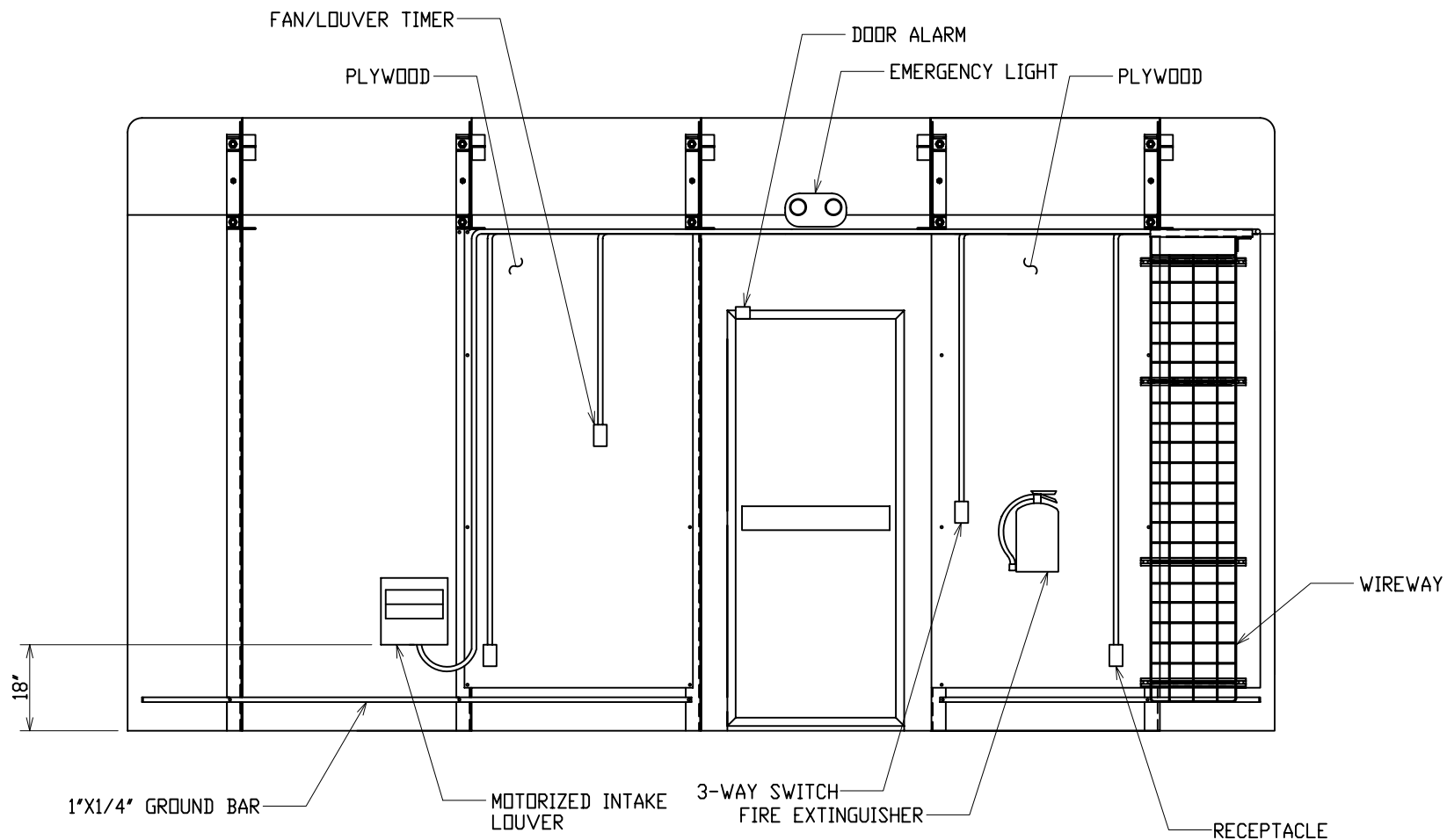
DRAWN:
 RB

PAGE
 4 OF 12

DATE
 2-7-12

DRAWING NO.
 2743

FILE REF:



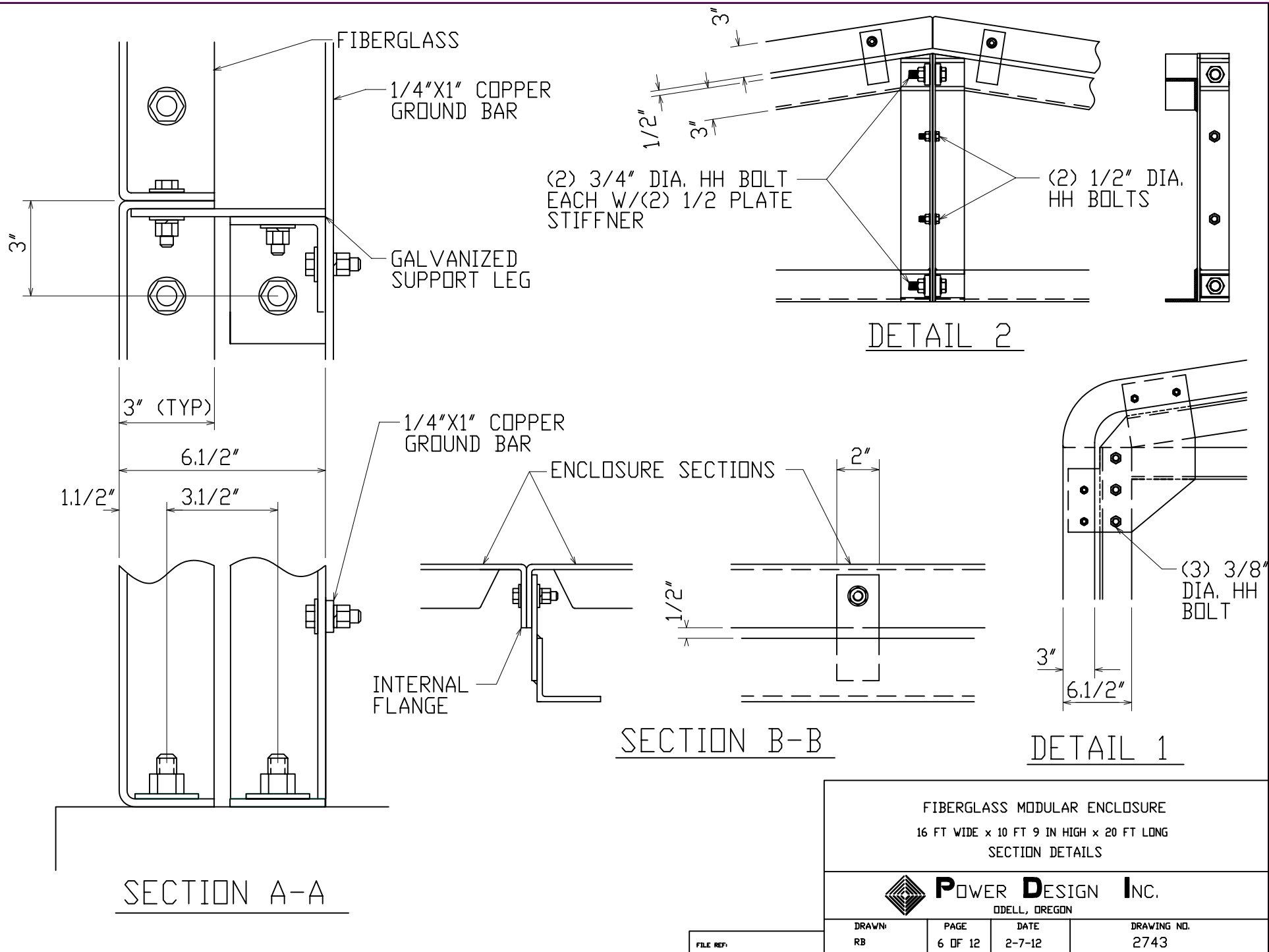
SECTION Z-Z

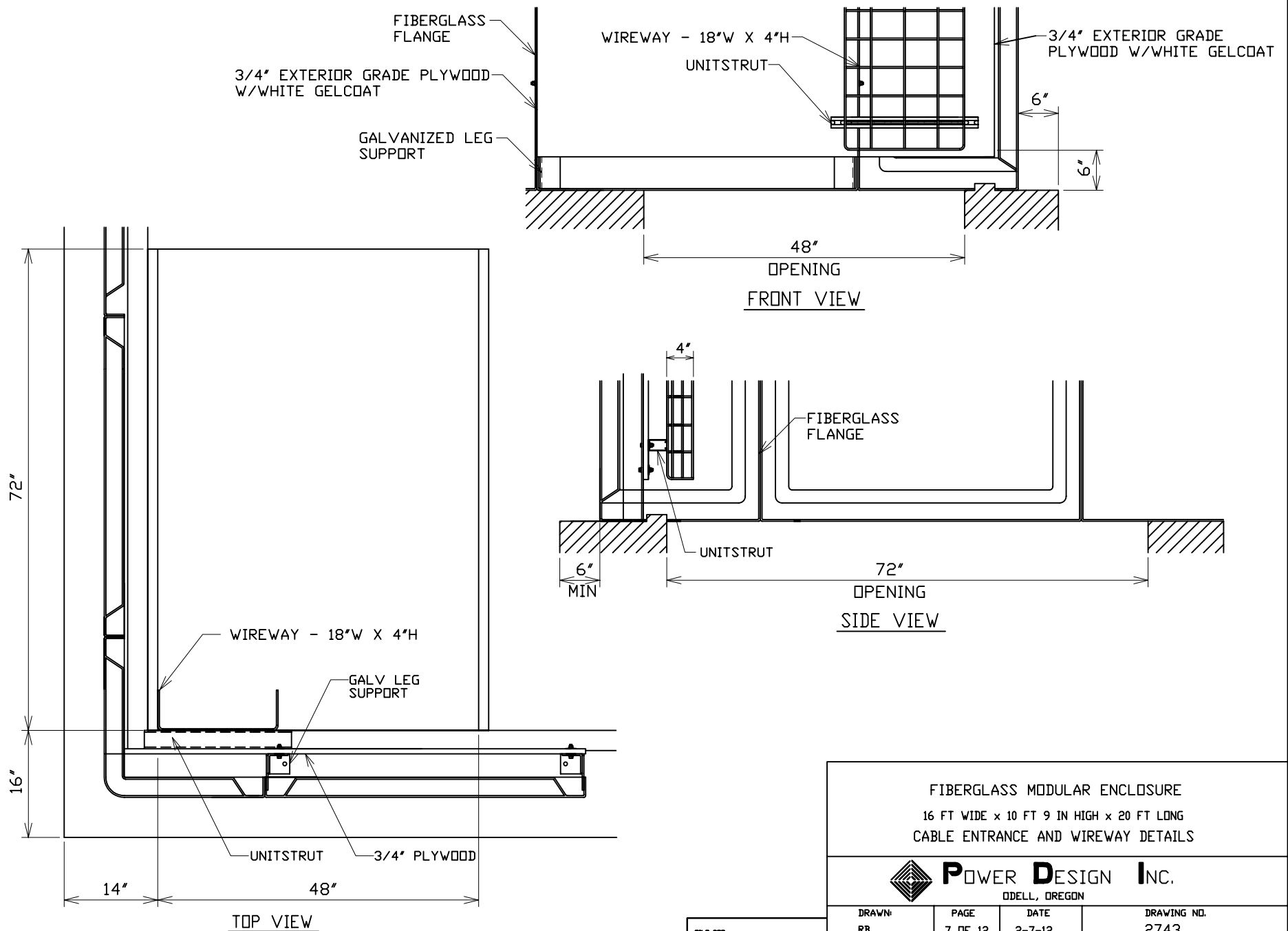
FIBERGLASS MODULAR ENCLOSURE
 16 FT WIDE x 10 FT 9 IN HIGH x 20 FT LONG
 SECTION Z-Z WALL DETAILS

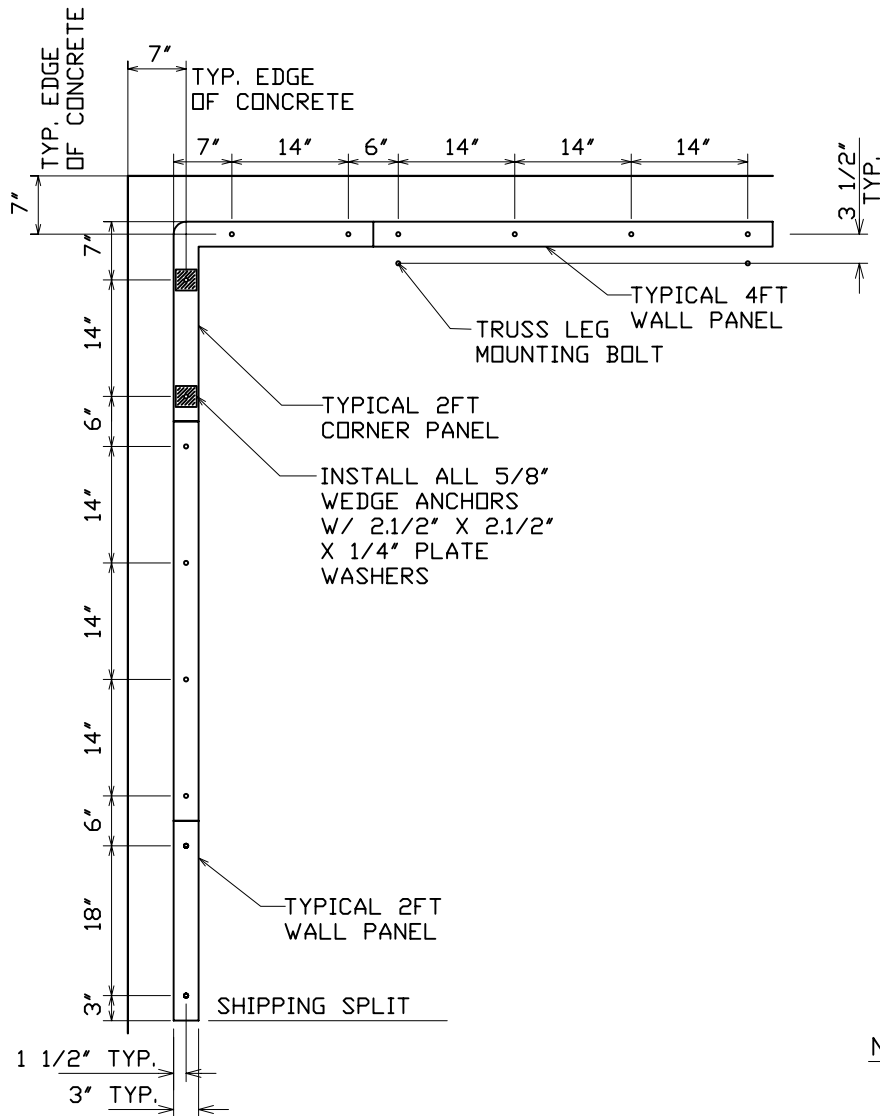


DRAWN: RB	PAGE 5 OF 12	DATE 2-7-12	DRAWING NO. 2743
--------------	-----------------	----------------	---------------------

FILE REF:







FLANGE MOUNTING
BOLT DETAIL

NOTE:

WEDGE ANCHORS AND PLATE WASHERS
SUPPLIED BY CUSTOMER

FIBERGLASS MODULAR ENCLOSURE
16 FT WIDE x 10 FT 9 IN HIGH x 20 FT LONG
PAD DETAILS



POWER DESIGN INC.

ODELL, OREGON

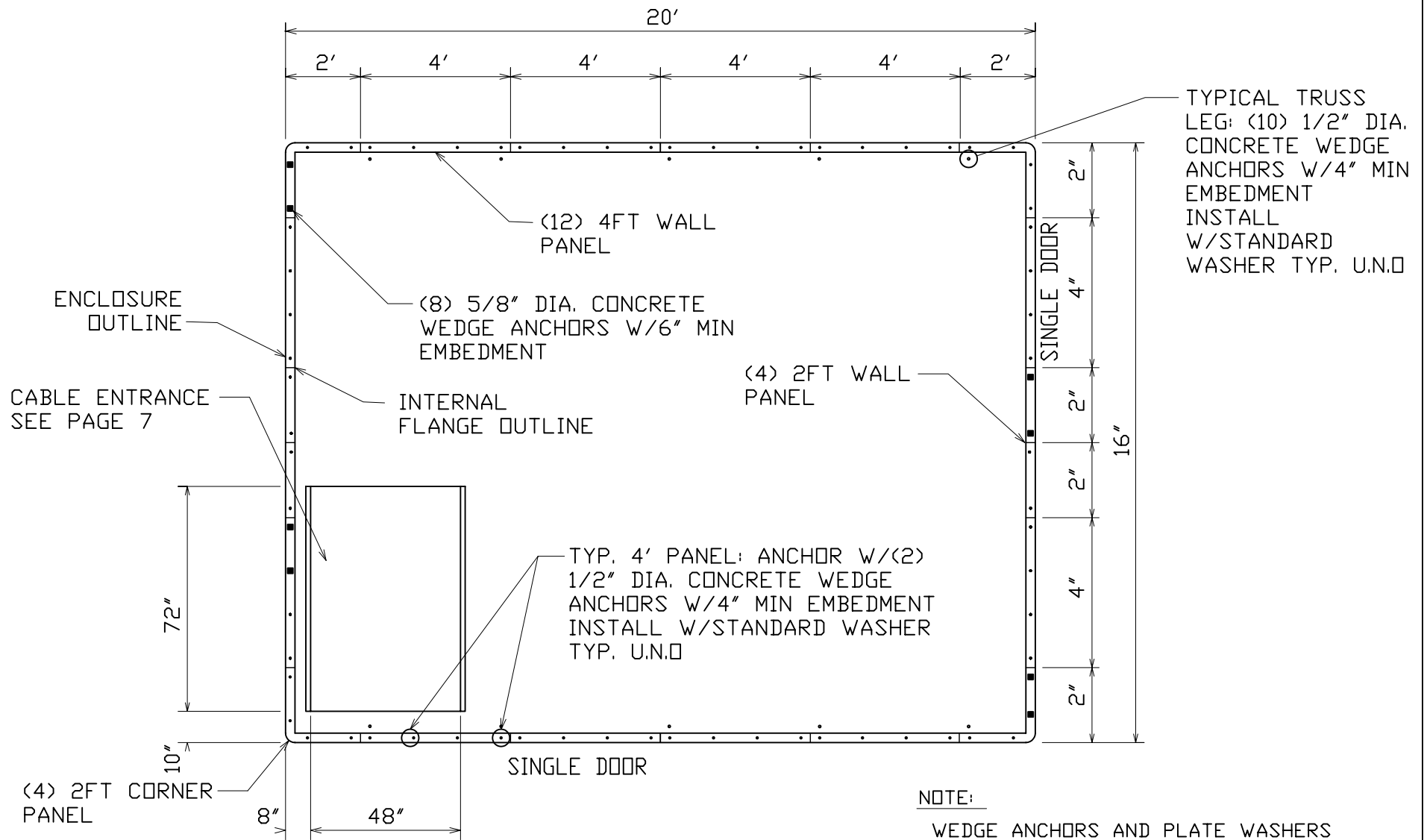
DRAWN:
RB

PAGE
8 OF 12

DATE
2-7-12

DRAWING NO.
2743

FILE REF:



NOTE:

WEDGE ANCHORS AND PLATE WASHERS
SUPPLIED BY CUSTOMER

FIBERGLASS MODULAR ENCLOSURE
16 FT WIDE x 10 FT 9 IN HIGH x 20 FT LONG
PAD DETAIL



POWER DESIGN INC.

ODELL, OREGON

FILE REF:

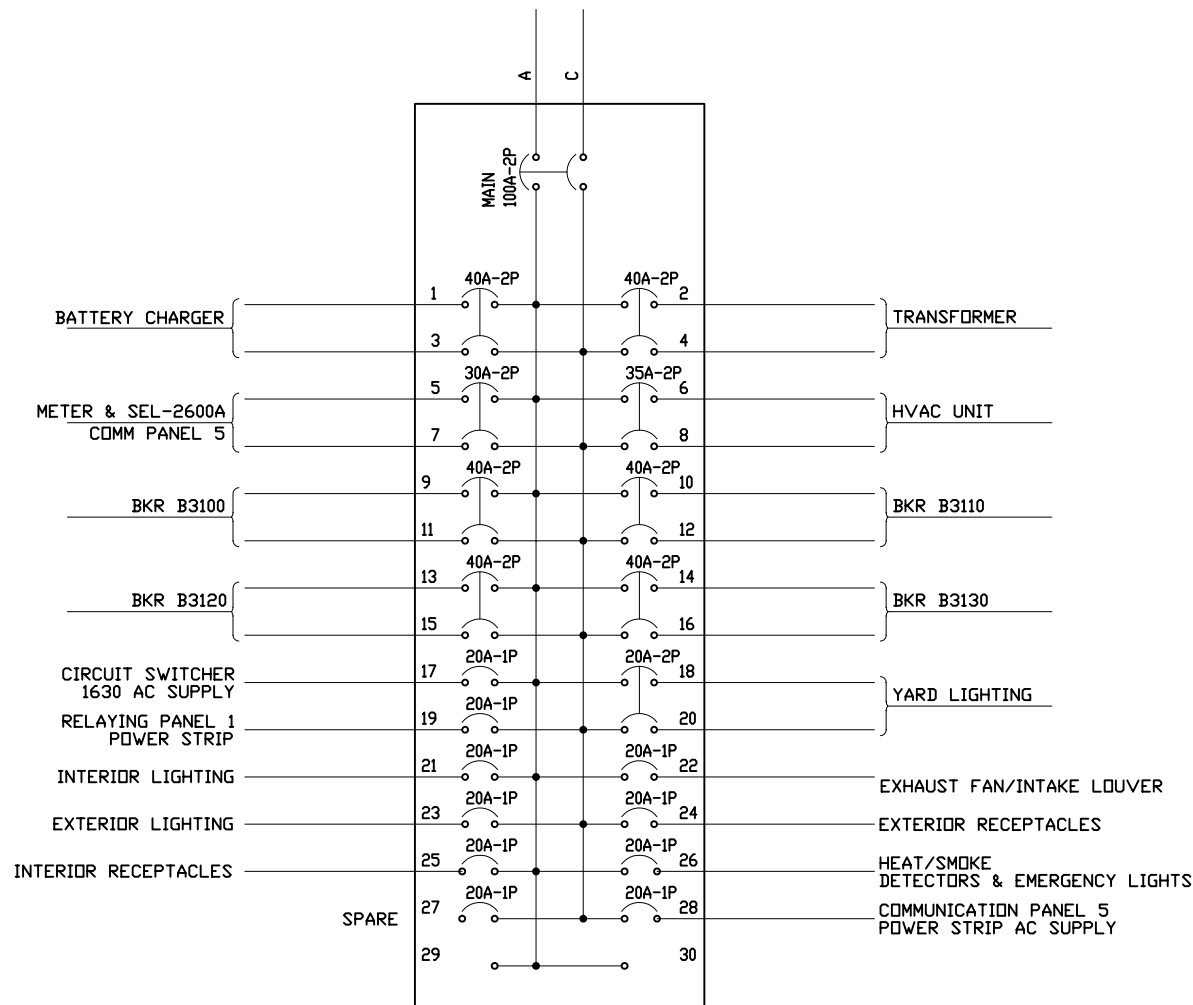
DRAWN
RB

PAGE
9 OF 12

DATE
2-7-12

DRAWING NO.
2743

TO STATION SERVICE



NOTE:

- 1) ALL CONDUIT TO BE 1/2" EMT. UNLESS NOTED
- 2) ALL WIRE TO BE #12 THHN, BLACK-PHASE, WHITE-NEUTRAL, GREEN-GROUND. UNLESS NOTED

AC PANEL BOARD

NEMA 1 - SURFACE MOUNT - 100A MAIN
120/240VAC - 3W - 10 KAIC

FIBERGLASS MODULAR ENCLOSURE
16 FT WIDE x 10 FT 9 IN HIGH x 20 FT LONG
AC PANEL



POWER DESIGN INC.

ODELL, OREGON

DRAWN:
RB

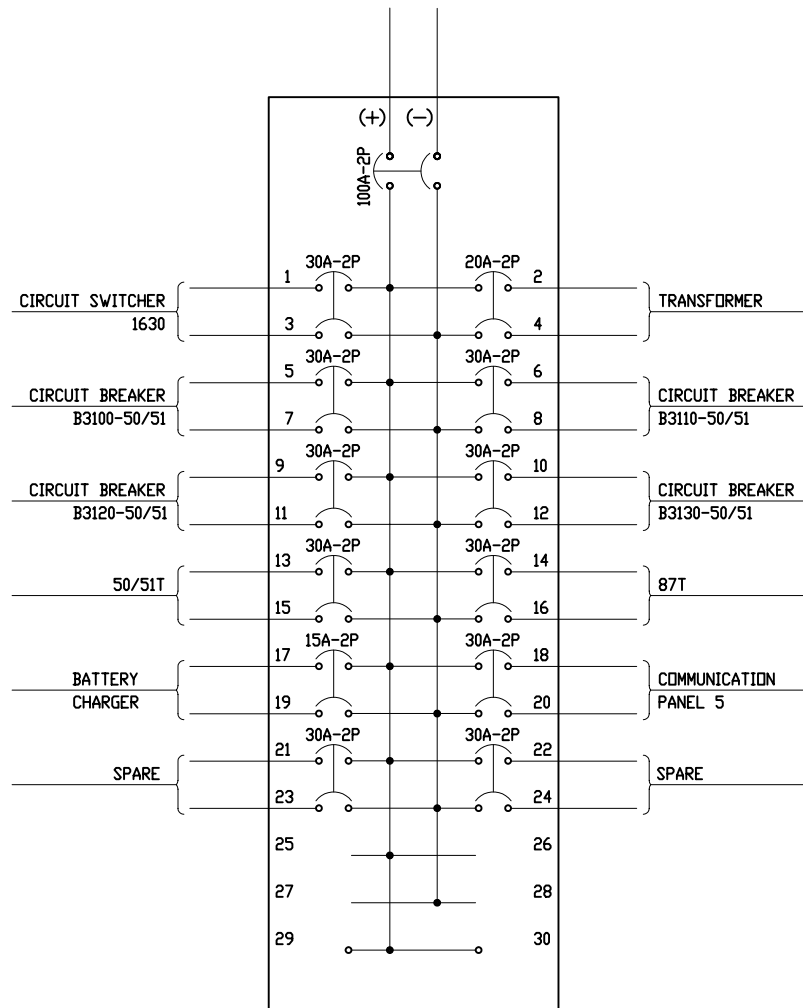
PAGE
10 OF 12

DATE
2-7-12

DRAWING NO.
2743

FILE REF:

TO 48VDC BATTERY BANK



DC PANEL BOARD

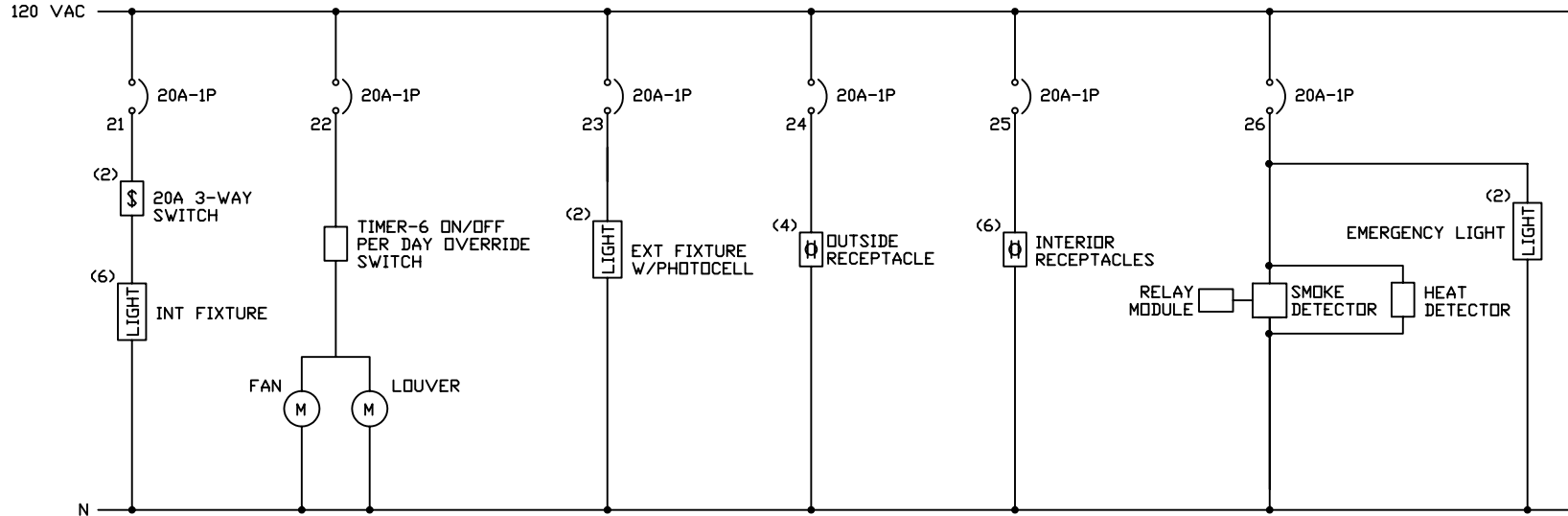
NEMA 1 - SURFACE MOUNT - 100A MAIN
48VDC - 2W - 10 KAIC

FIBERGLASS MODULAR ENCLOSURE
16 FT WIDE x 10 FT 9 IN HIGH x 20 FT LONG
DC PANEL

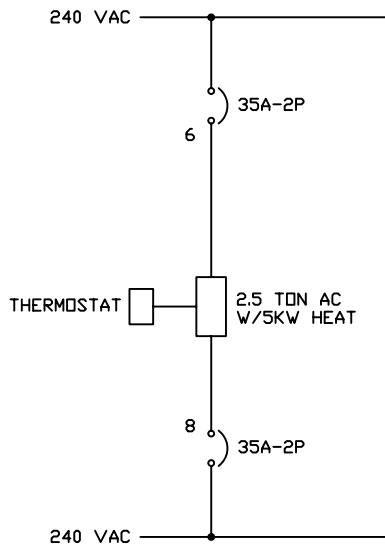
 **POWER DESIGN INC.**
ODELL, OREGON

DRAWN: RB	PAGE 11 OF 12	DATE 2-7-12	DRAWING NO. 2743
--------------	------------------	----------------	---------------------

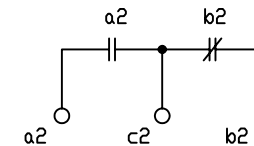
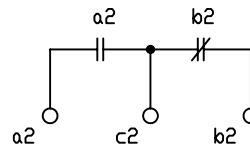
FILE REF:



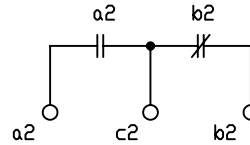
120VAC CIRCUIT SCHEMATIC
FACTORY WIRING



240VAC CIRCUIT SCHEMATIC
FACTORY WIRING




SMOKE DETECTOR RELAY CONTACTS



DOOR ALARM CONTACTS

NOTES

- 1) ALL WIRE TO BE #12 SOLID THHN, BLACK-PHASES, WHITE-NEUTRAL, GREEN-GROUND

FIBERGLASS MODULAR ENCLOSURE 16 FT WIDE x 10 FT 9 IN HIGH x 20 FT LONG FACTORY WIRED AC CIRCUIT SCHEMATICS			
 POWER DESIGN INC. ODELL, OREGON			
DRAWN: RB	PAGE 12 OF 12	DATE 2-7-12	DRAWING NO. 2743

FILE REF:















