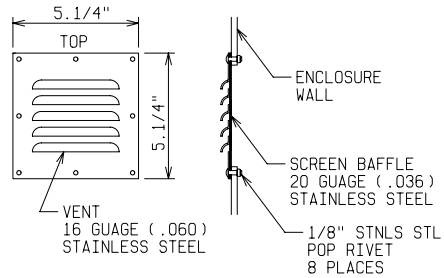
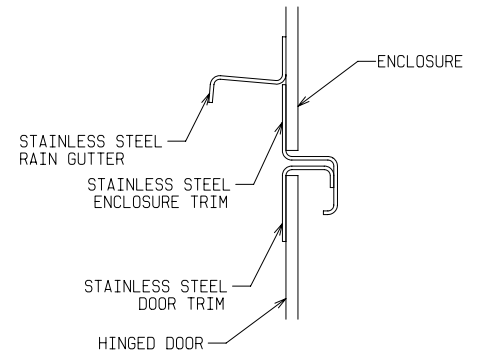


DOOR

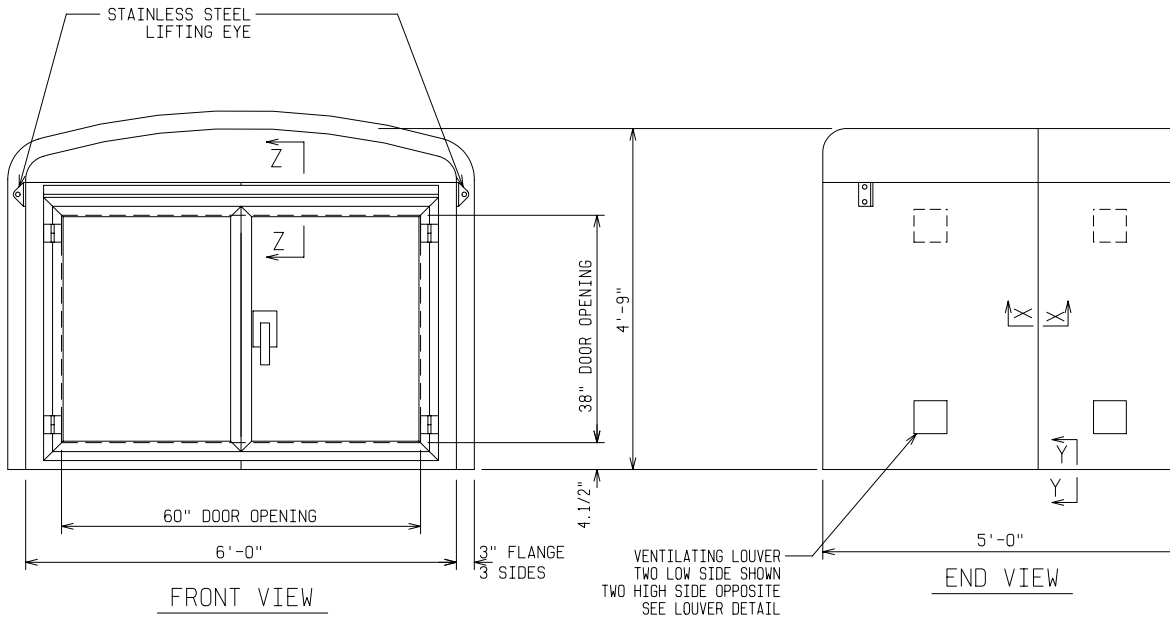
TOP VIEW



LOUVER DETAIL



SECTION Z-Z

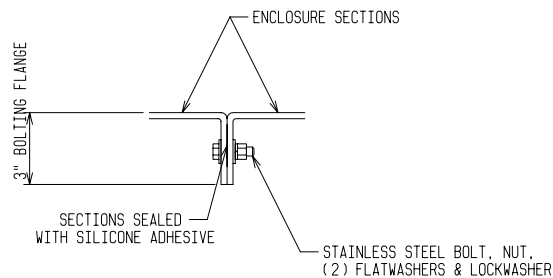


FRONT VIEW

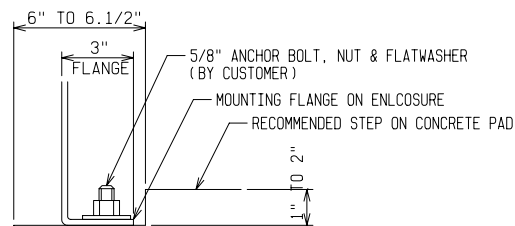
END VIEW

NOTE:

1. MATERIAL:
 - 1) FIBERGLASS LAMINATE 1/4" NOMINAL THICKNESS
 - 2) EXTERIOR UV STABILIZED GELCOAT - 14 MIL NOMINAL THICKNESS
 - 3) FIRE RETARDANT - DOES NOT SUPPORT COMBUSTION
 - 4) TYPE 316 STAINLESS STEEL HARDWARE
2. STANDARDS:
 - 1) CERTIFIED TEST DATA OF ASTM STRUCTURAL STANDARDS AVAILABLE UPON REQUEST



SECTION X-X



SECTION Y-Y

CATALOG NO: ME4-72-1987-L2-MG

PADMOUNT SECONDARY TERMINAL BUS
6 FT WIDE x 4 FT 9 IN HIGH x 5 FT LONG
ONE DOUBLE DOOR

POWER DESIGN INC.
ODELL, OREGON

DRAWN: BB	PAGE 2 OF 2	DATE 10-30-03	DRAWING NO. 1987
--------------	----------------	------------------	---------------------

FILE REF: