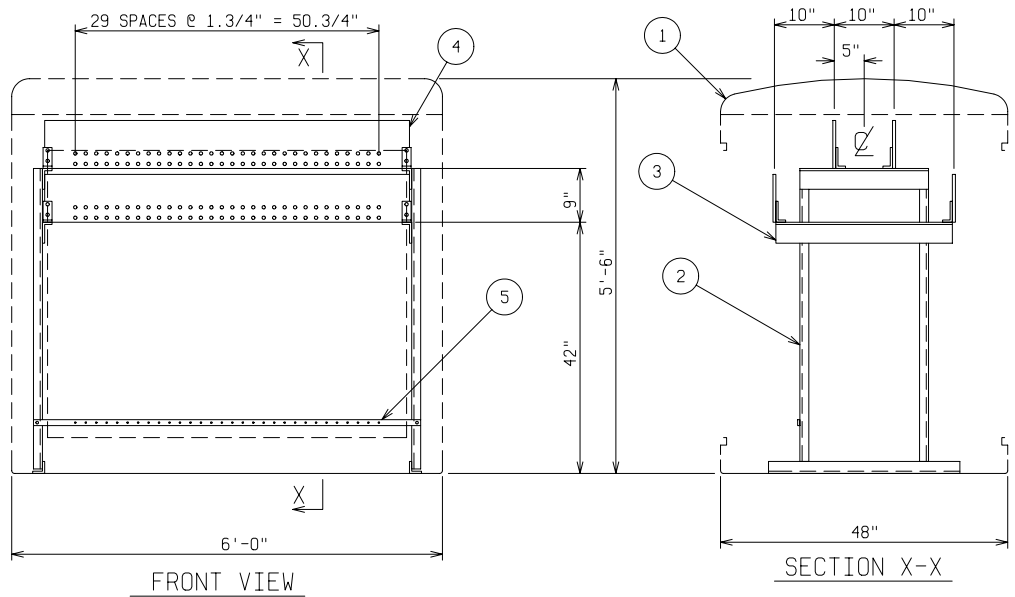


**PAD & ANCHOR BOLT DETAIL**

ANCHOR BOLTS TO BE 5/8" DIA. & TO EXTEND 1-1/2" MINIMUM ABOVE PAD. PROVIDE CABLE ENTRY AS REQ'D.



MATERIAL LIST - STANDARD UNIT	
ITEM	DESCRIPTION
1	FIBERGLASS MODULAR BUILDING - 4 DOOR - MUNSELL GREEN - STAINLESS STEEL HARDWARE - PDI MODEL ME4-48-1986-L2-MG
2	GALVANIZED STEEL FREE-STANDING FRAME
3	FIBERGLASS ANGLE INSULATOR - GPO-3
4	1/2" x 8" COPPER BUS BARS - 30 POSITION - NEMA 2 HOLE DRILLING
5	1/4" x 1" COPPER GROUND BUS - 30 POSITION - #10-32 TAPPED HOLES

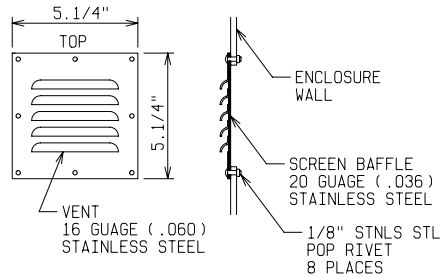
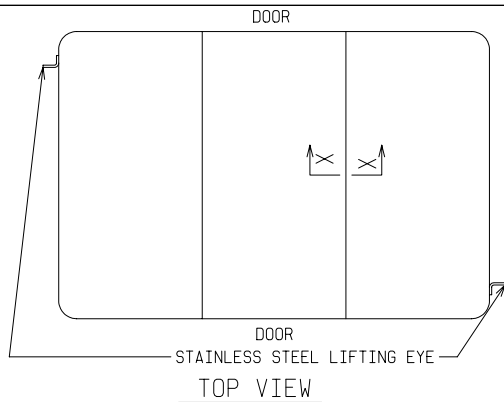
CATALOG NO: ME4-48-1986-L2-MG

PADMOUNT SECONDARY TERMINAL BUS

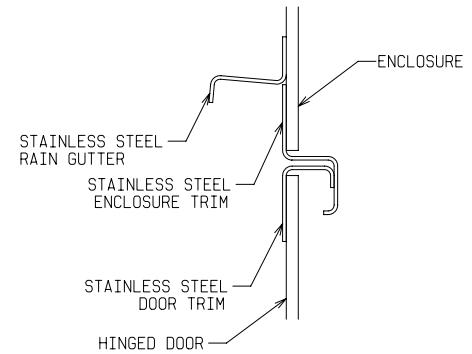
600V 2500 AMP (30) NEMA 2 HOLE  
THREE PHASE (1) 1/2" x 8" COPPER BUS PER PHASE + NEUTRAL



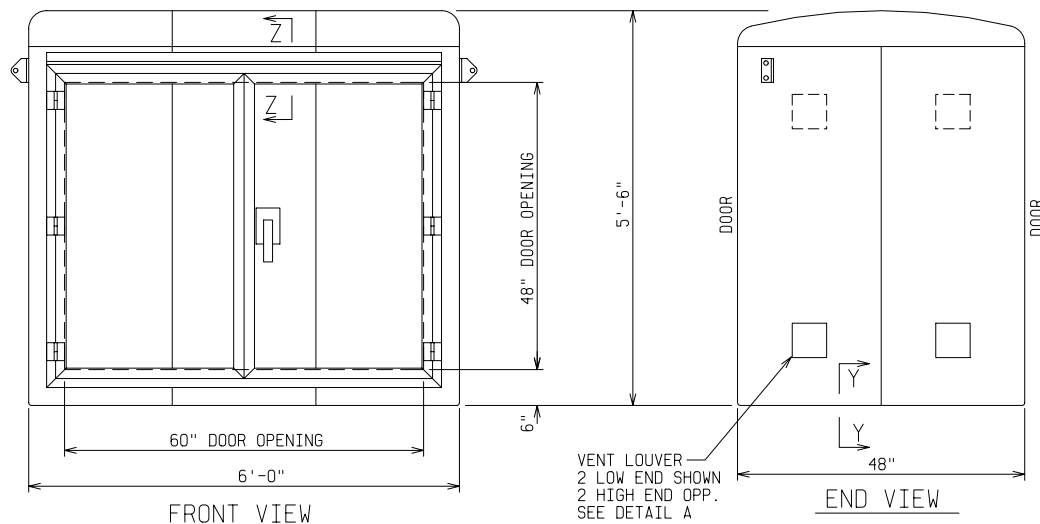
DRAWN: BB	PAGE 1 OF 2	DATE 3-13-01	DRAWING NO. 1986
	FILE REF:		



LOUVER DETAIL

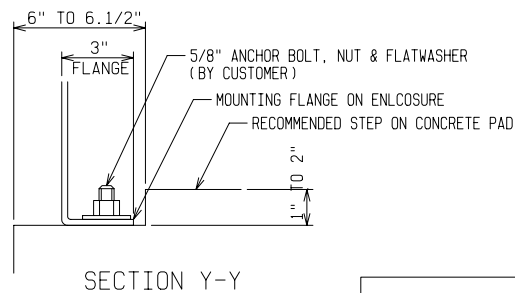
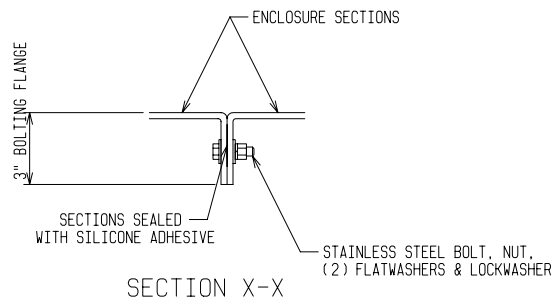


SECTION Z-Z



NOTE:

1. MATERIAL:
  - 1) FIBERGLASS LAMINATE 1/4" NOMINAL THICKNESS
  - 2) EXTERIOR UV STABILIZED GELCOAT - 14 MIL NOMINAL THICKNESS
  - 3) FIRE RETARDANT - DOES NOT SUPPORT COMBUSTION
  - 4) TYPE 316 STAINLESS STEEL HARDWARE
2. STANDARDS:
  - 1) CERTIFIED TEST DATA OF ASTM STRUCTURAL STANDARDS AVAILABLE UPON REQUEST



CATALOG NO: ME4-48-1986-L2-MG

PADMOUNT SECONDARY TERMINAL BUS  
 4 FT WIDE x 5 FT 6 IN HIGH x 6 FT LONG  
 TWO DOUBLE DOORS

**POWER DESIGN INC.**  
 ODELL, OREGON

DRAWN: BB	PAGE 2 OF 2	DATE 10-30-03	DRAWING NO. 1986
--------------	----------------	------------------	---------------------

FILE REF: