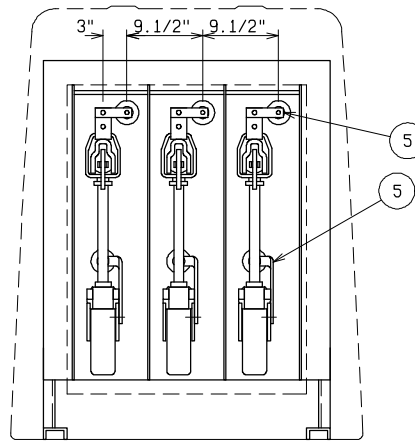
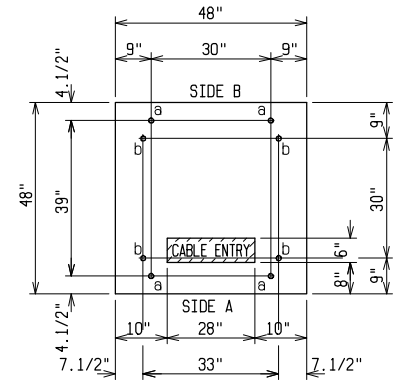


TOP VIEW

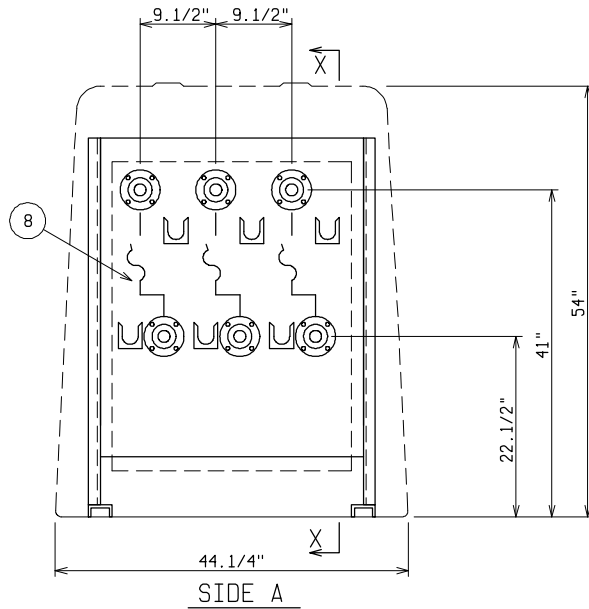


SIDE B

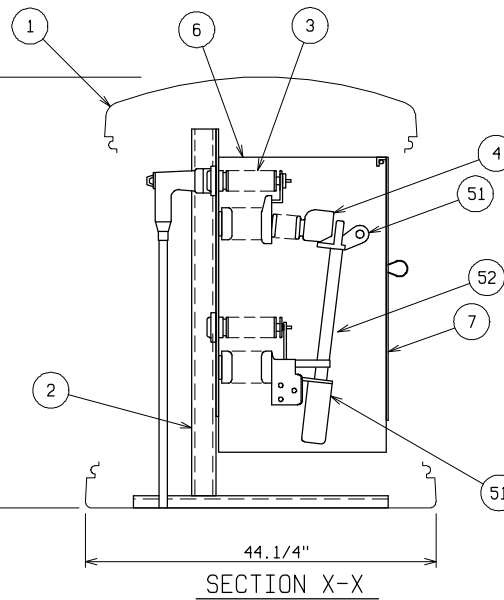


PAD AND ANCHOR BOLT DIMENSIONS

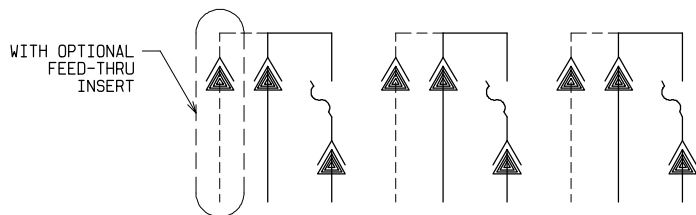
ANCHOR BOLTS TO BE 5/8" DIA. AND TO EXTEND: a = 1.1/2" MIN.
b = 2.1/2" MIN.
PROVIDE CABLE ENTRY AS REQUIRED.



SIDE A



SECTION X-X



SCHEMATIC

MATERIAL LIST - STANDARD UNIT

| ITEM | DESCRIPTION |
|------|---|
| 1 | FIBERGLASS EQUIPMENT ENCLOSURE - 4 DOOR - STANDARD GREEN - STAINLESS STEEL HARDWARE - PDI MODEL PE2-44-0-L2 |
| 2 | GALVANIZED STEEL FREE STANDING FRAME |
| 3 | CABLE TO AIR BUSHING WELL - 25KV - 125KV BIL - 200 AMP |
| 4 | S&C TYPE SML-20 LOADBREAK FUSE MOUNTING - 15KV - 95KV BIL 200E AMP MAX FUSE (FUSE NOT INCLUDED) |
| 5 | 1/8" x 1" COPPER BUS |
| 6 | 3/16" THICK GLASTIC BARRIER |
| 7 | CLEAR LEXAN COVER BARRIER - LIFT-OFF |
| 8 | SCHEMATIC DIAGRAM TAPED & STENCILED ON FRONT PLATE |

OPTIONAL EQUIPMENT

| | |
|----|---|
| 51 | S&C TYPE SML-20 FUSE END FITTINGS |
| 52 | S&C TYPE SMU-20 FUSE UNIT - 15KV - SPECIFY AMPERE FUSE REQ'D 200E AMP MAXIMUM |
| 53 | 200 AMP LOADBREAK FEED-THRU INSERT - 15KV - 95KV BIL |

SWITCHGEAR - DEADFRONT

15KV 200 AMP 95KV BIL

THREE PHASE RADIAL FEED WITH (1) LOADBREAK FUSED TAP



POWER DESIGN INC.

ODELL, OREGON

| DRAWN: | PAGE | DATE | DRAWING NO. |
|--------|------|----------|-------------|
| BB | | 11-23-98 | 1566 |

FILE REF.