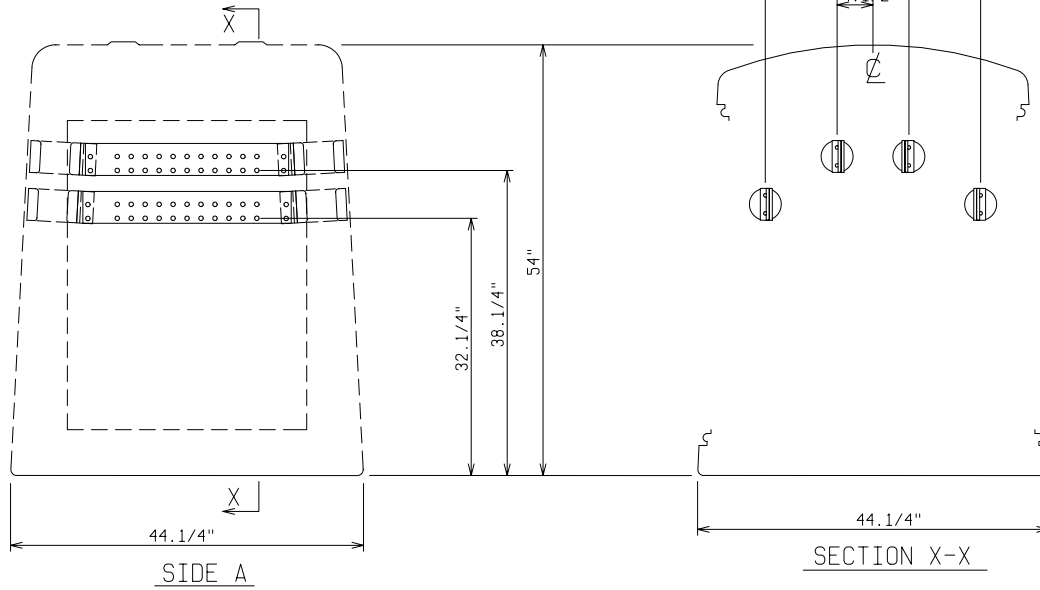
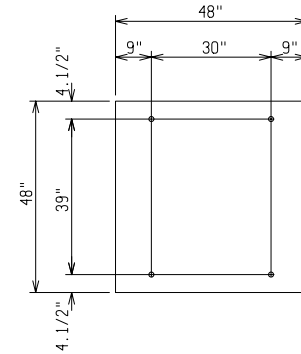


TOP VIEW



SECTION X-X



PAD AND ANCHOR BOLT DIMENSIONS

ANCHOR BOLTS TO BE 5/8" DIA. AND TO EXTEND 1.1/2" MIN.  
 PROVIDE CABLE ENTRY AS REQUIRED.

MATERIAL LIST - STANDARD UNIT

ITEM	DESCRIPTION
1	FIBERGLASS EQUIPMENT ENCLOSURE - 2 DOOR - STANDARD LIGHT GREEN STAINLESS STEEL HARDWARE - PDI MODEL PE2-44-0-L2
2	1/4" X 4" COPPER BUS
3	95KV BIL INSULATOR

OPTIONAL EQUIPMENT


SWITCHGEAR

600V 1200 AMP  
 THREE PHASE (1) 1/4 x 4 COPPER BAR PER PHASE



FILE REF:	DRAWN: BB	PAGE	DATE 2-11-98	DRAWING NO. 1507
-----------	--------------	------	-----------------	---------------------