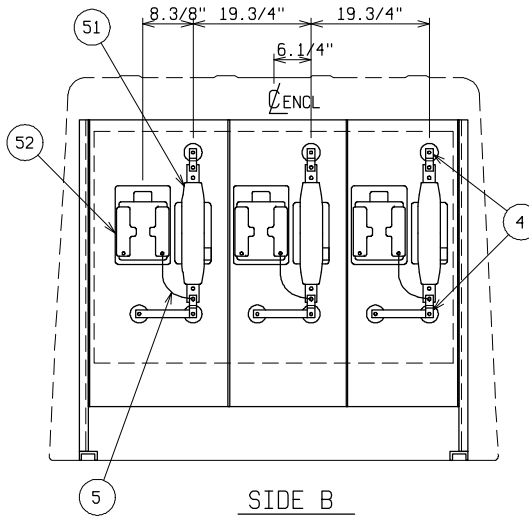
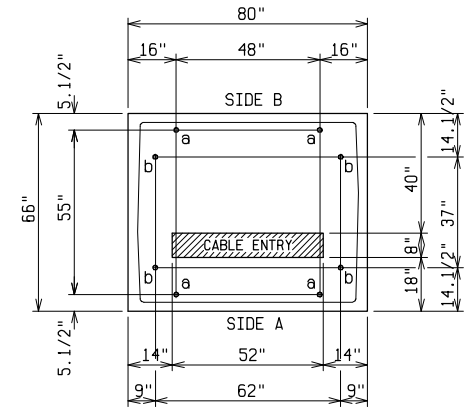


SIDE A - OPTIONAL
RADIAL FEED

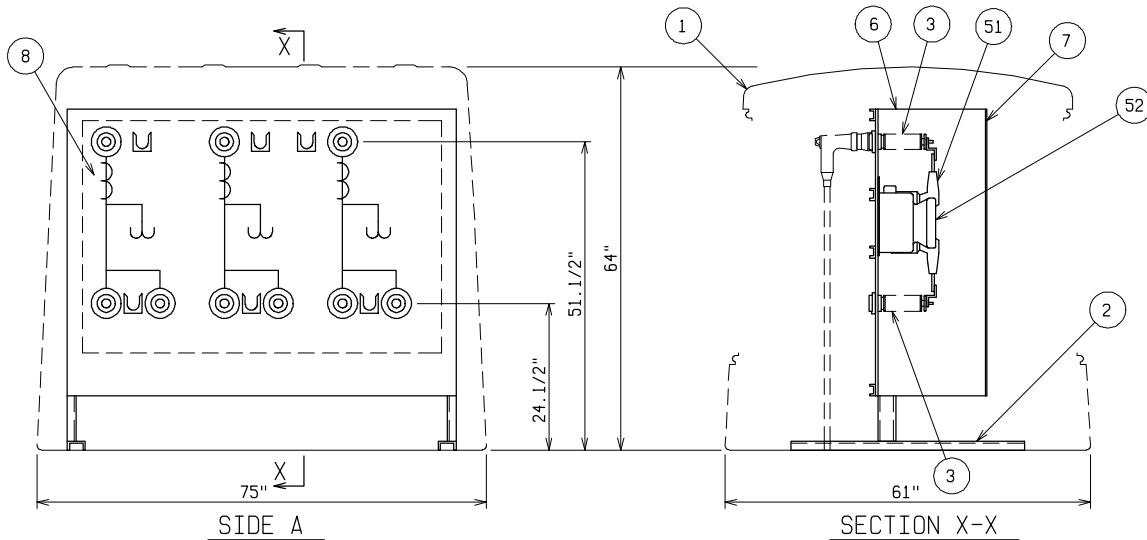


SIDE B



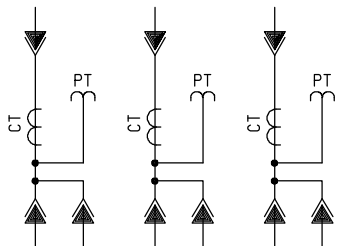
PAD & ANCHOR BOLT DETAIL

ANCHOR BOLTS TO BE 5/8" DIA. & TO EXTEND:
 $a = 1-1/2"$ ABOVE PAD
 $b = 2-1/2"$ ABOVE PAD
 PROVIDE CABLE ENTRY AS REQ'D.



SIDE A

SECTION X-X



SCHEMATIC

MATERIAL LIST - STANDARD UNIT

ITEM	DESCRIPTION
1	FIBERGLASS EQUIPMENT ENCLOSURE - 4 DOOR - STANDARD GREEN COLOR STAINLESS STEEL HARDWARE - PDI MODEL PE4-74-2
2	GALVANIZED STEEL FREE STANDING FRAME
3	CABLE TO AIR BUSHING WELL - 25KV - 125KV BIL - 200 AMP
4	1/8" x 1" COPPER BUS
5	No. 6 AWG SOLID COPPER
6	3/16" THICK GLASTIC BARRIER
7	LIFT-OFF LEXAN FRONT COVER BARRIER
8	SCHEMATIC DIAGRAM TAPED & STENCILED ON FRONT PLATE

OPTIONAL EQUIPMENT

51	CURRENT TRANSFORMER - INDOOR TYPE - 15KV - 110KV BIL - 600:5 MAXIMUM RATIO
52	POTENTIAL TRANSFORMER - INDOOR TYPE - 15KV - 110KV BIL - 120:1 MAXIMUM RATIO

CATALOG NO: PS4-74-1488-L2-WG

PRIMARY METERING - DEADFRONT

15KV 200 AMP 110KV BIL

THREE PHASE METERING 3 CT 3 PT



POWER DESIGN INC.

ODELL, OREGON

DRAWN: BB	PAGE	DATE 10-13-97	DRAWING NO. 1488
--------------	------	------------------	---------------------

FILE REF.