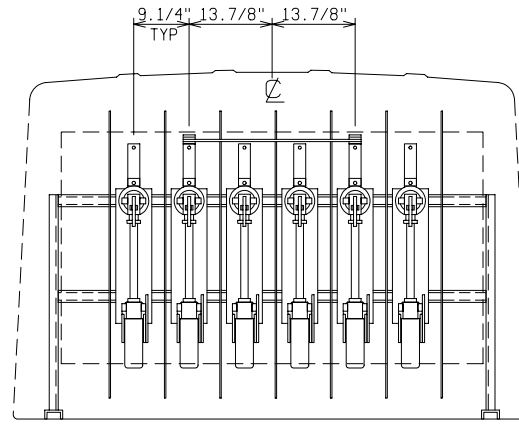
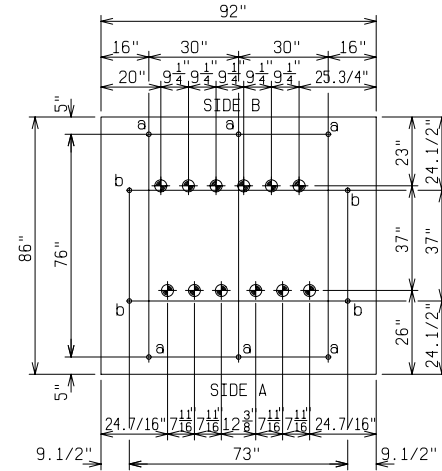


TOP VIEW



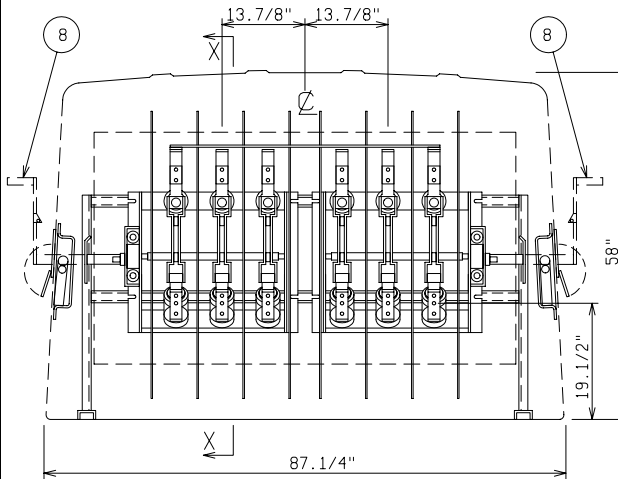
SIDE B



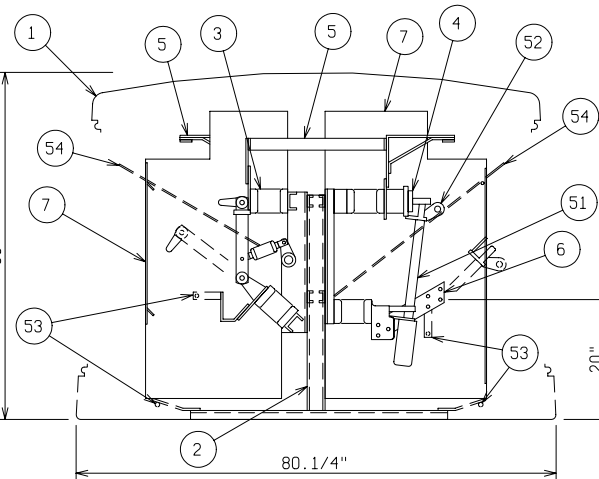
PAD & ANCHOR BOLT DETAILS

ANCHOR BOLTS TO BE 5/8" DIA. & TO EXTEND:  
 a = 1-1/2" MINIMUM  
 b = 2-1/2" MINIMUM  
 PROVIDE CABLE ENTRY HOLES AS REQUIRED.

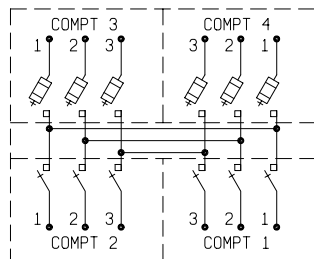
◆ = PROJECTED CABLE TERMINAL POINT



SIDE A



SECTION X-X



SCHEMATIC

MATERIAL LIST - STANDARD UNIT

ITEM	DESCRIPTION
1	FIBERGLASS EQUIPMENT ENCLOSURE - 4 DOOR - STANDARD GREEN - STNLS. STL. HARDWARE - PDI MODEL NO. PE4-86-1
2	GALVANIZED STEEL FREE-STANDING FRAME
3	ELECTRICAL EQUIPMENT INC THREE PHASE AUTO-JET II SWITCH - 15KV 600 AMP - 95KV BIL - 40,000A RMS ASYM.
4	ELECTRICAL EQUIPMENT INC TYPE EE-20 AUTO-JET FUSE MOUNTING 15KV - 95KV BIL - 200E AMP MAX. - 20,000A RMS ASYM.
5	1/4" x 2" COPPER BUS
6	1/4" x 3" COPPER BUS
7	3/16" GPO-3 BARRIER
8	SWITCH OPERATING HANDLE, FIBERGLASS ACCESS DOOR & STORAGE POCKET

OPTIONAL EQUIPMENT

51	S&C TYPE SMU-20 FUSE UNIT - SPECIFY AMPERE FUSE REQ'D. (200E MAX.)
52	S&C TYPE SM-20 FUSE END FITTINGS
53	5/8" DIA. GROUND STUDS ON SWITCH & FUSE TERMINALS
54	DUAL PURPOSE FRONT COVER BARRIERS IN SWITCH & FUSE COMPARTMENTS
55	SPARE FUSE CONTAINERS IN FUSE COMPARTMENTS

SWITCHGEAR

15KV 200/600 AMP 95KV BIL  
 (2) 3 PHASE SWITCHED FEED (2) THREE PHASE FUSED TAPS

**POWER DESIGN INC.**  
 ODELL, OREGON

DRAWN: BB	PAGE	DATE 6-15-94	DRAWING NO. 1199
--------------	------	-----------------	---------------------

FILE REF: