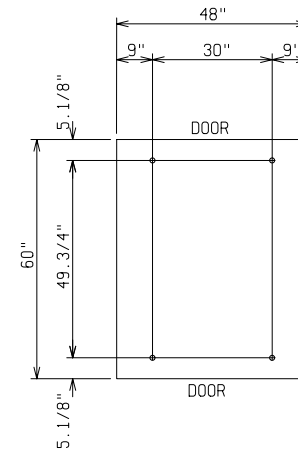
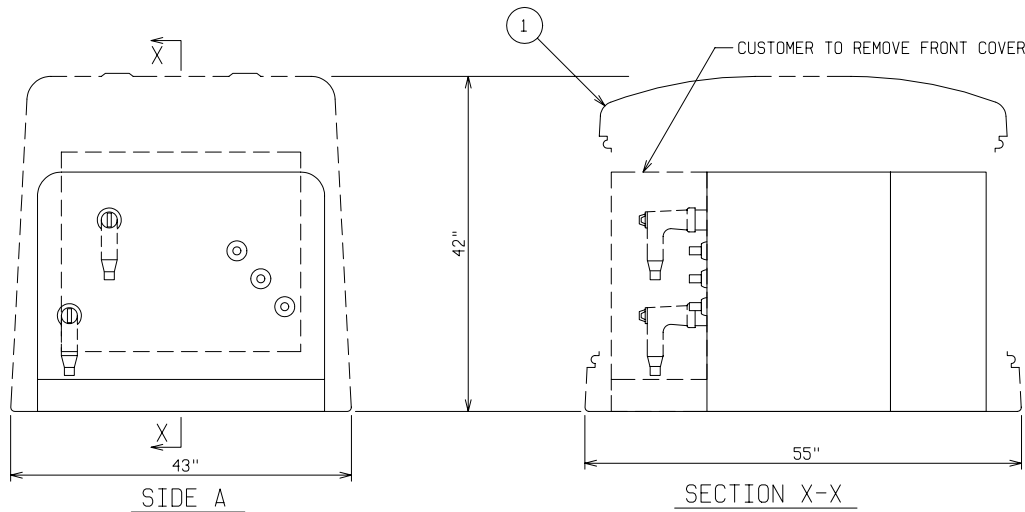


TOP VIEW



PAD AND ANCHOR BOLT DIMENSIONS

ANCHOR BOLTS TO BE 5/8" DIA. AND TO EXTEND 1-1/2" MIN. PROVIDE CABLE ENTRY AS REQUIRED.



SIDE A

SECTION X-X

MATERIAL LIST - STANDARD UNIT

ITEM	DESCRIPTION
1	FIBERGLASS EQUIPMENT ENCLOSURE - 2 DOOR - MUNSELL GREEN STAINLESS STEEL HARDWARE - PDI MODEL PE2-45-L2-MG

CATALOG NO: PS2-45-1695-L2-MG

TRANSFORMER - DEADFRONT
SINGLE PHASE 167KVA



POWER DESIGN INC.
ODELL, OREGON

HULL MUNICIPAL

FILE REF:

DRAWN: BB	PAGE	DATE 3-9-00	DRAWING NO. 1695
--------------	------	----------------	---------------------