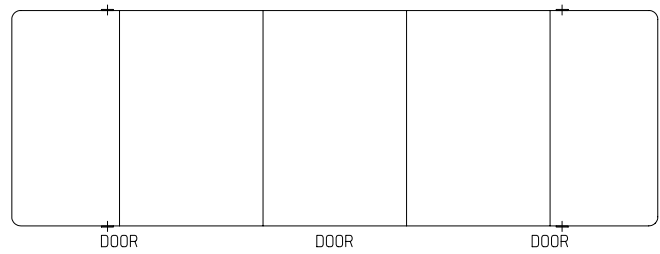
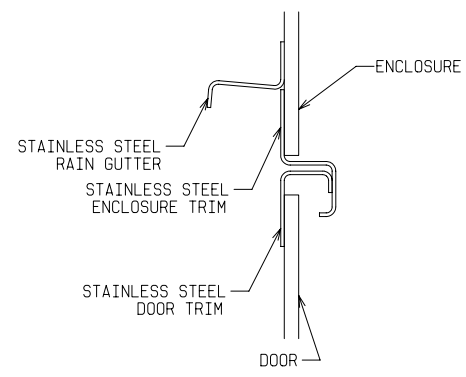


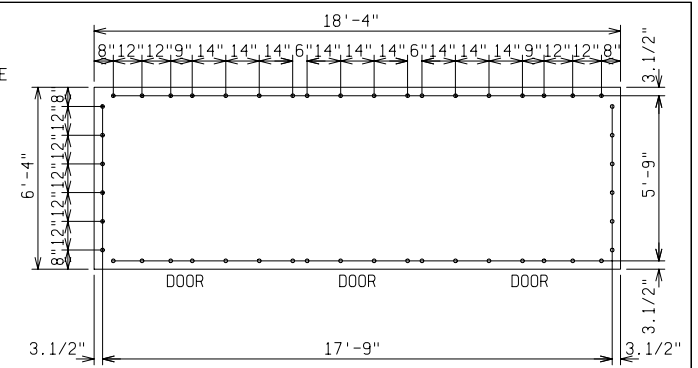
DETAIL A



TOP VIEW

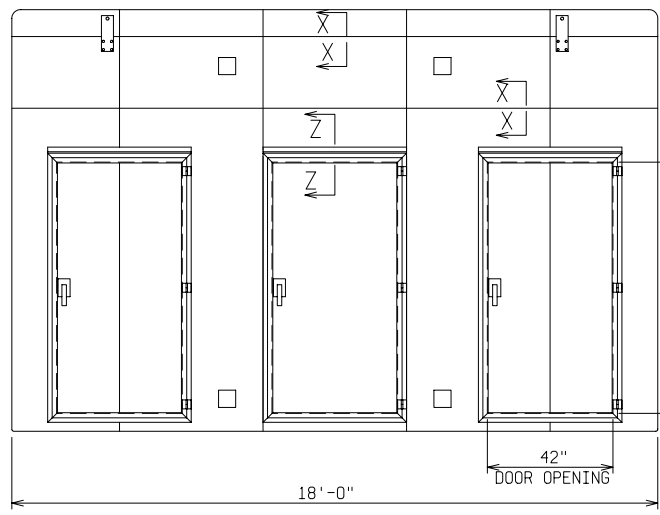


SECTION Z-Z

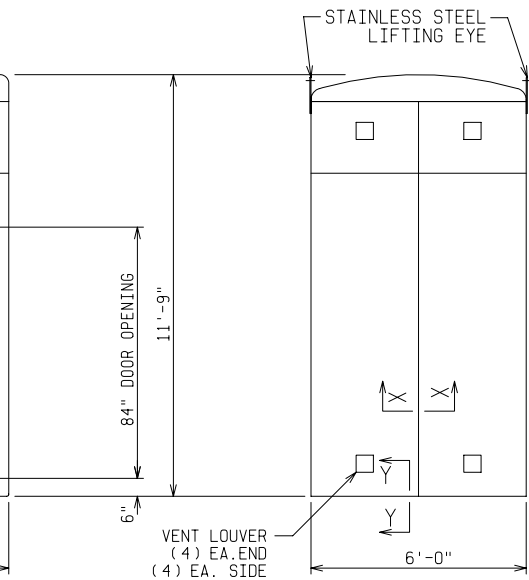


PAD & ANCHOR BOLT DETAIL

ANCHOR BOLTS TO BE 5/8" DIA. AND TO EXTEND 1-1/2" MINIMUM ABOVE PAD
PROVIDE CABLE ENTRY AS REQUIRED

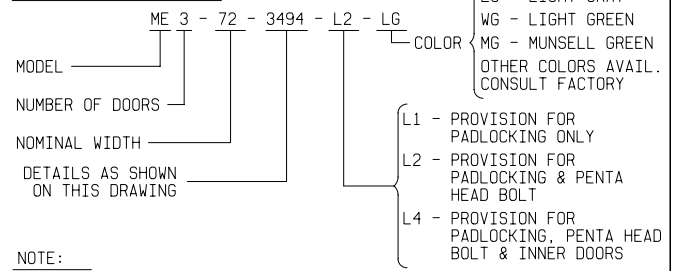


FRONT VIEW



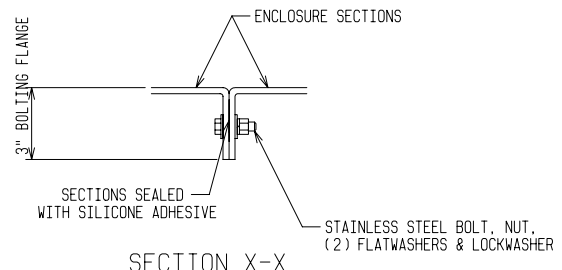
END VIEW

ORDERING INFORMATION:

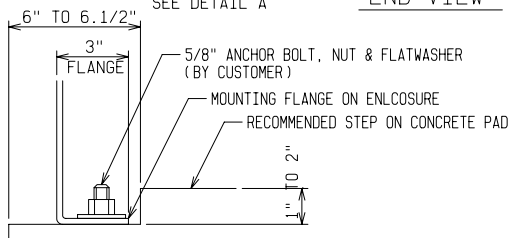


NOTE:

- MATERIAL:**
 - FIBERGLASS LAMINATE 1/4" NOMINAL THICKNESS
 - EXTERIOR UV STABILIZED GELCOAT - 14 MIL NOMINAL THICKNESS
 - FIRE RETARDANT - DOES NOT SUPPORT COMBUSTION
 - STAINLESS STEEL HARDWARE
- STANDARDS:**
 - CERTIFIED TEST DATA OF ASTM STRUCTURAL STANDARDS AVAILABLE UPON REQUEST



SECTION X-X



SECTION Y-Y

FIBERGLASS MODULAR ENCLOSURE
6 FT WIDE x 11 FT 9 IN HIGH x 18 FT LONG
(3) ACCESS DOORS

POWER DESIGN INC.
ODELL, OREGON

DRAWN: BB	PAGE	DATE 4-4-03	DRAWING NO. 3494
--------------	------	----------------	---------------------

FILE REF: