

ORDERING INFORMATION:

MODEL ME 5 - 48 - 3413 - L2 - LG

NUMBER OF DOORS

NOMINAL WIDTH

DETAILS AS SHOWN
ON THIS DRAWING

COLOR

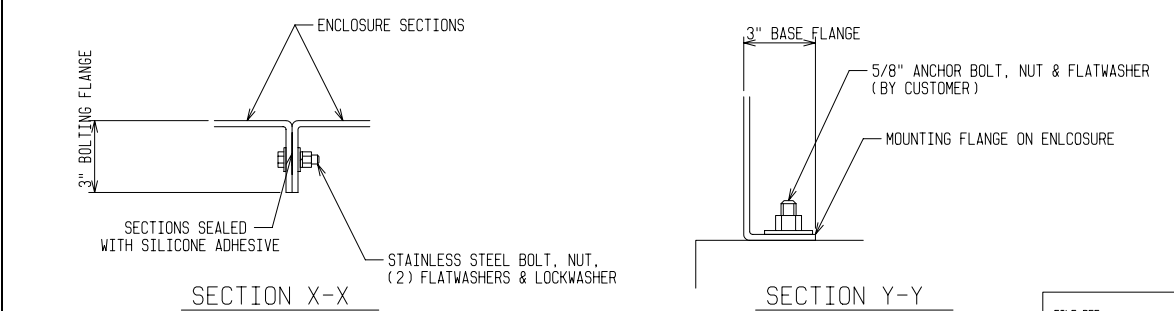
LG - LIGHT GRAY
WG - LIGHT GREEN
MG - MUNSELL GREEN
OTHER COLORS AVAIL.
CONSULT FACTORY

L1 - PROVISION FOR
PADLOCKING ONLY

L2 - PROVISION FOR
PADLOCKING & PENTA
HEAD BOLT

L4 - PROVISION FOR
PADLOCKING, PENTA HEAD
BOLT & INNER DOORS

- NOTE:
- MATERIAL:
 - FIBERGLASS LAMINATE 1/4" NOMINAL THICKNESS
 - EXTERIOR UV STABILIZED GELCOAT - 14 MIL NOMINAL THICKNESS
 - FIRE RETARDANT - DOES NOT SUPPORT COMBUSTION
 - STAINLESS STEEL HARDWARE
 - STANDARDS:
 - CERTIFIED TEST DATA OF ASTM STRUCTURAL STANDARDS AVAILABLE UPON REQUEST
 - EXHAUST HARDWARE PACKAGE TO BE MOUNTED BY CUSTOMER



ENGINE GENERATOR ENCLOSURE

4 FT WIDE x 5'-6" HIGH x 10 FT LONG

TWO DOUBLE & ONE SINGLE ACCESS DOORS (2) INTAKE AND (1) EXHAUST LOUVER

POWER DESIGN INC.
ODELL, OREGON

DRAWN: BB	PAGE	DATE 3-4-03	DRAWING NO. 3413
--------------	------	----------------	---------------------

FILE REF: