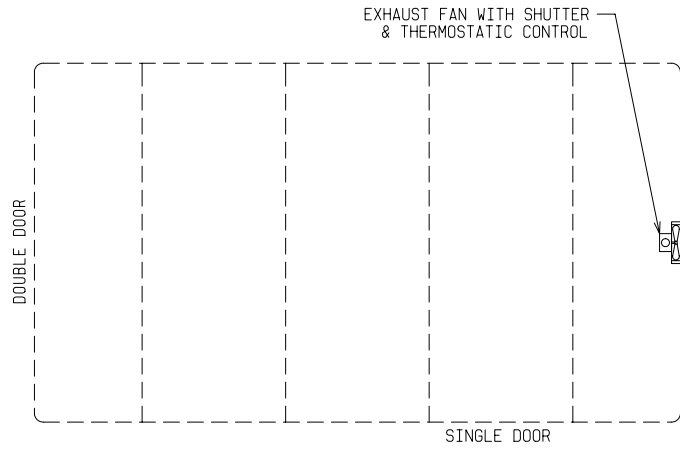
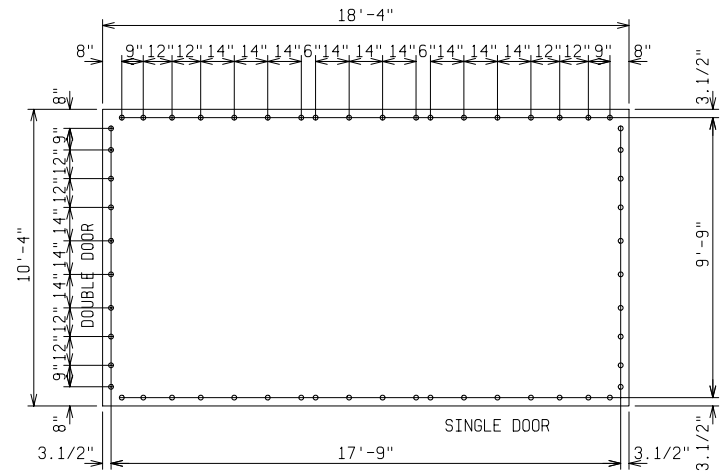


SECTION Z-Z

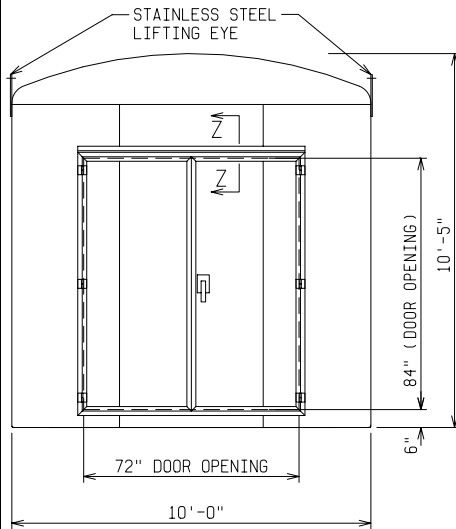


PLAN VIEW

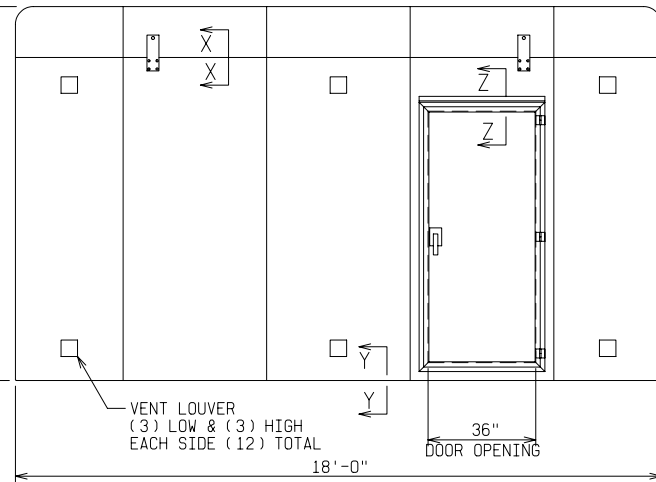


PAD & DETAIL BOLT DETAIL

ANCHOR BOLTS TO BE 5/8" DIA. & TO EXTEND 1-1/2" MINIMUM ABOVE PAD. PROVIDE UTILITY ENTRY AS REQUIRED.

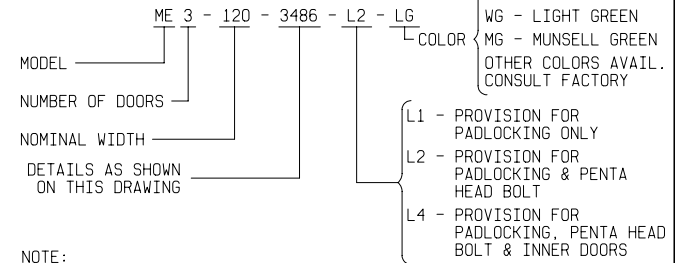


END VIEW



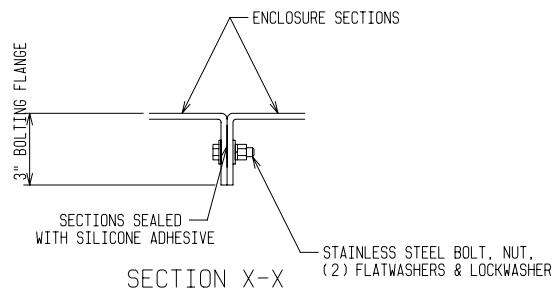
FRONT VIEW

ORDERING INFORMATION:

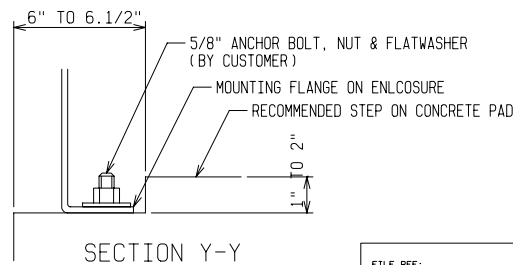


NOTE:

- MATERIAL:
 - FIBERGLASS LAMINATE 1/4" NOMINAL THICKNESS
 - EXTERIOR UV STABILIZED GELCOAT - 14 MIL NOMINAL THICKNESS
 - FIRE RETARDANT - DOES NOT SUPPORT COMBUSTION
 - STAINLESS STEEL HARDWARE
- STANDARDS:
 - CERTIFIED TEST DATA OF ASTM STRUCTURAL STANDARDS AVAILABLE UPON REQUEST



SECTION X-X



SECTION Y-Y

FIBERGLASS MODULAR ENCLOSURE 10 FT WIDE x 10 FT 5 IN HIGH x 18 FT LONG ONE 72" DOUBLE DOOR & ONE 36" SINGLE DOOR EXHAUST FAN INTAKE LVRS			
 ODELL, OREGON			
DRAWN: BB	PAGE	DATE 6-4-03	DRAWING NO. 3486

FILE REF: