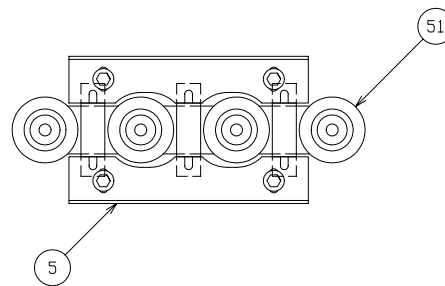
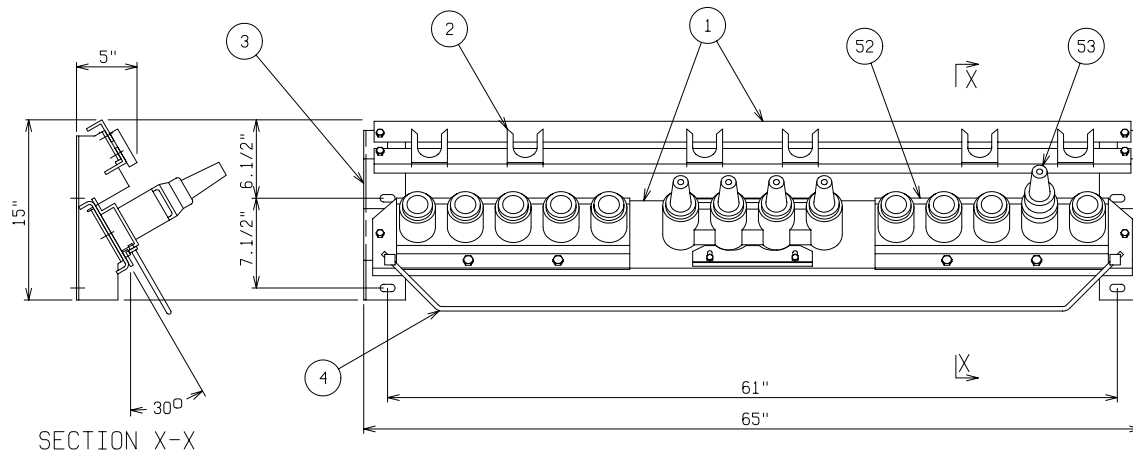


MOUNTING BOLT DETAILS

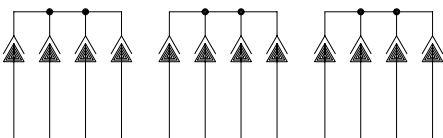
ANCHORS TO BE 1/2" DIA. AND TO EXTEND 1-1/2" MINIMUM.



4-WAY JUNCTION MOUNTING DETAIL



SECTION X-X



SCHEMATIC

MATERIAL LIST - STANDARD UNIT	
ITEM	DESCRIPTION
1	ALUMINUM JUNCTION MOUNTING BAR AND PARKING CLIP MOUNTING RAILS
2	ADJUSTABLE LOCATION STAINLESS STEEL PARKING CLIPS
3	STAINLESS STEEL MOUNTING CLIPS
4	3/8" DIAMETER COPPER GROUND BAR
5	STAINLESS STEEL ADJUSTABLE U-STRAP CLAMPS

OPTIONAL EQUIPMENT	
51	200 AMP LOADBREAK JUNCTION - 15KV OR 25KV - 95/125KV BIL - SPECIFY VOLTAGE, MANUFACTURER AND 2, 3 OR 4-WAY
52	ELASTIMOLD 5-WAY MULTI-POINT JUNCTION 15 OR 25KV - 95/125KV BIL - SPECIFY VOLTAGE
53	200 AMP LOADBREAK BUSHING WELL INSERT - 15KV OR 25KV 95/125KV BIL - SPECIFY VOLTAGE AND MANUFACTURER

NOTE:

1. MOUNTING BAR WILL WITHSTAND A MINIMUM 400 LB. LOADING TO INSTALL OR REMOVE ELBOWS.

CATALOG NO: MB-30-GB38-1788

DEADFRONT CABLE JUNCTION MOUNT

15/25KV      200 AMP      95/125KV BIL

THREE PHASE      TWO 5-WAY AND ONE 2, 3 OR 4-WAY LOADBREAK JUNCTION



**POWER DESIGN INC.**  
ODELL, OREGON

SIERRA PACIFIC

FILE REF:

DRAWN: BB	PAGE	DATE 5-2-01	DRAWING NO. 1788
--------------	------	----------------	---------------------