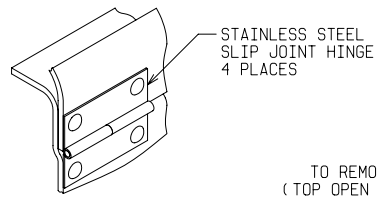
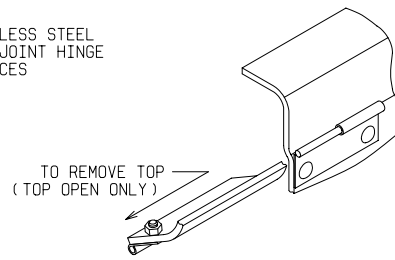


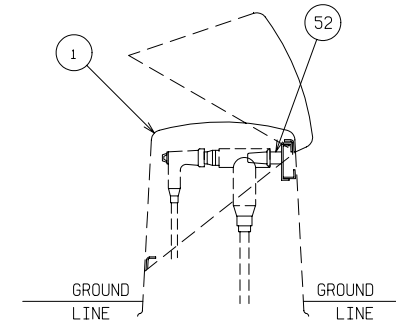
LATCH DETAIL
TWO PLACES



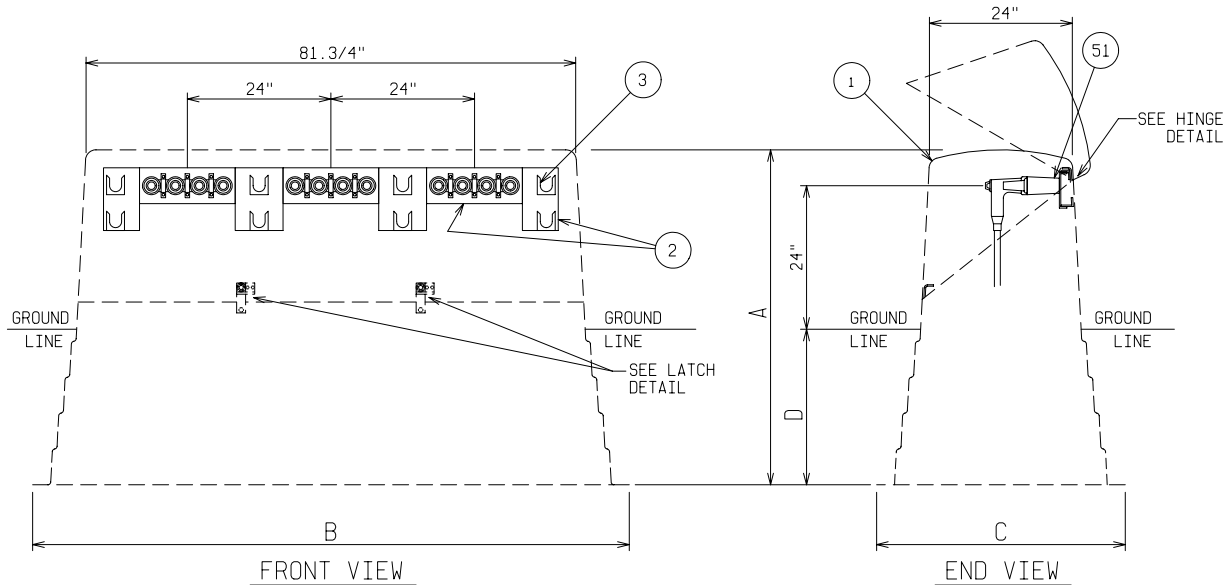
HINGE DETAIL
(TOP CLOSED)



HINGE DETAIL
(TOP OPEN)

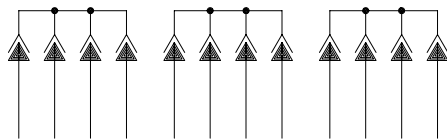


ALTERNATE END VIEW
WITH 600 AMP JUNCTION



FRONT VIEW

END VIEW



SCHEMATIC

MODEL No.	OVERALL HEIGHT	OVERALL WIDTH AT BOTTOM	OVERALL DEPTH AT BOTTOM	MAXIMUM RECOMMENDED BURIAL DEPTH SEE NOTE 1
	A	B	C	D
CJP-84-41	41"	98.1/4"	40"	17"
CJP-84-50	50"	99"	41"	20"
CJP-84-56	56"	99.3/4"	41.1/2"	26"

MATERIAL LIST - STANDARD UNIT

ITEM	DESCRIPTION
1	POWER DESIGN INC MODEL NO CJP-84 FIBERGLASS CABLE JUNCTION PEDESTAL
2	ALUMINUM JUNCTION MOUNTING BARS AND PARKING CLIP MOUNTING BARS
3	STAINLESS STEEL PARKING CLIPS

OPTIONAL EQUIPMENT

51	200 AMP LOADBREAK JUNCTION - 15/25KV - 95/125KV BIL - SPECIFY VOLTAGE & 2, 3, OR 4-WAY
52	600 AMP DEADBREAK JUNCTION - 15/25KV - 95/125KV BIL - SPECIFY VOLTAGE & 2, 3, OR 4-WAY

NOTE:

1. ORDERING INFORMATION:

USER SHOULD SELECT "D", BURIAL DEPTH, DESIRED. SPECIFY "A", OVERALL HEIGHT, AS A SUFFIX TO THE BASIC PART NO. i.e.: CJP-84-50 = 50" OVERALL HEIGHT 24" TERMINAL HEIGHT MAY BE INCREASED BY DECREASING BURIAL DEPTH OR ORDERING THE NEXT SIZE GREATER "A" DIMENSION.

2. MATERIAL:

- 1) FIBERGLASS LAMINATE 1/4" NOMINAL THICKNESS
- 2) EXTERIOR UV STABILIZED GELCOAT - 14 MIL NOMINAL THICKNESS
- 3) FIRE RETARDANT - DOES NOT SUPPORT COMBUSTION
- 4) TYPE 316 STAINLESS STEEL HARDWARE

3. MOUNTING BAR WILL WITHSTAND A MINIMUM 400 LB. LOADING TO INSTALL OR REMOVE ELBOWS.

DEADFRONT CABLE JUNCTION PEDESTAL

15/25KV 200 AMP 95/125KV BIL
THREE PHASE 2, 3 OR 4-WAY LOADBREAK JUNCTIONS



DRAWN: BB	PAGE	DATE 2-20-04	DRAWING NO. 1998
--------------	------	-----------------	---------------------

FILE REF: