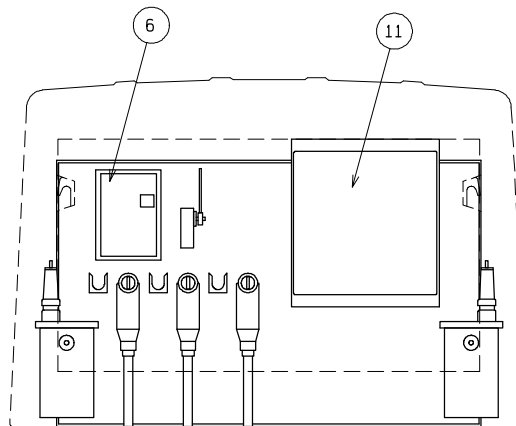
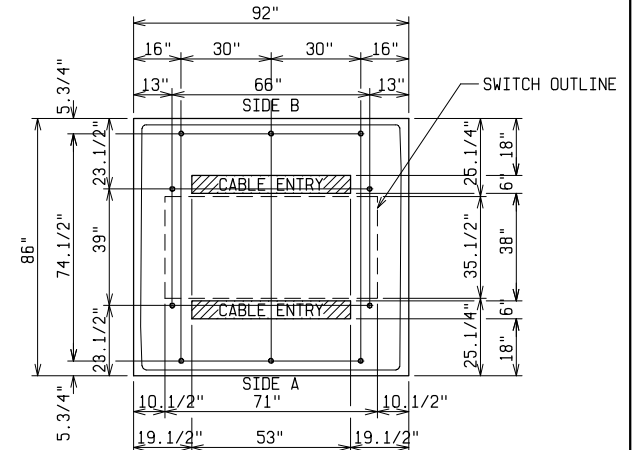


TOP VIEW

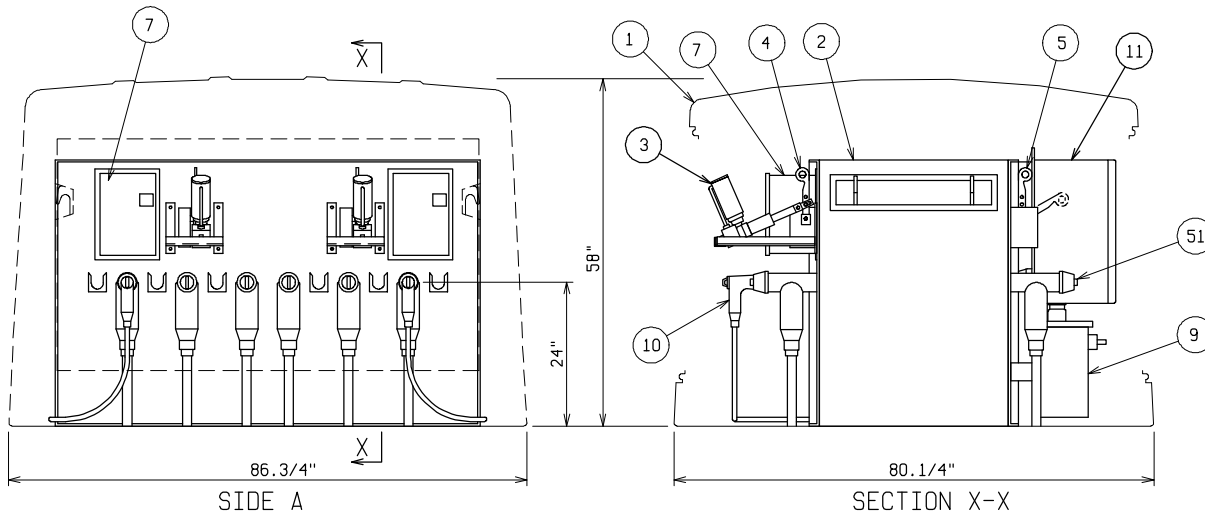


SIDE B



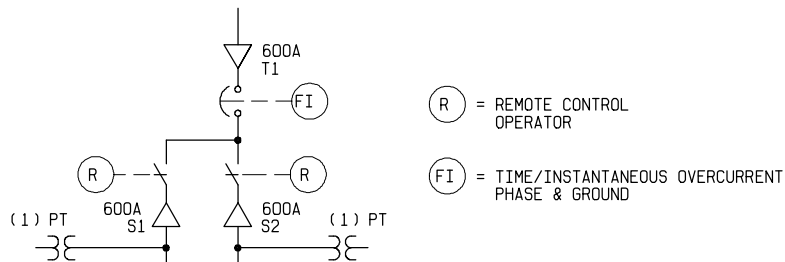
PAD & ANCHOR BOLT DETAIL

ANCHOR BOLTS TO BE 5/8" DIA. & TO EXTEND 1-1/2" MINIMUM ABOVE PAD. PROVIDE CABLE ENTRY AS REQ'D.



SIDE A

SECTION X-X



ONE LINE SCHEMATIC

(R) = REMOTE CONTROL OPERATOR

(FI) = TIME/INSTANTANEOUS OVERCURRENT PHASE & GROUND

MATERIAL LIST - STANDARD UNIT

ITEM	DESCRIPTION
1	FIBERGLASS EQUIPMENT ENCLOSURE - 4 DOOR - STANDARD GREEN - STAINLESS STEEL HARDWARE - PDI MODEL NO. PE4-86-1
2	VACUUM LOADBREAK/FAULT INTERRUPTER SWITCH - SF6 INSULATION 600 AMP - 15/25KV - 95/125KV BIL - 12 KAIC
3	REMOTE CONTROL MOTOR OPERATOR - STORED ENERGY OPERATOR
4	MANUAL SWITCH OPERATOR
5	VACUUM FAULT INTERRUPTER OPERATOR (VFI)
6	VACUUM FAULT INTERRUPT CONTROL - ELECTRONIC TRIP CONTROL (ETC)
7	AUXILIARY SWITCH HOUSING
8	RELAY CLASS CURRENT TRANSFORMERS - INTERNALLY MOUNTED (NOT SHOWN)
9	CONTROL POWER TRANSFORMER - DEADFRONT - 125KV BIL
10	CONTROL TRANSFORMER JUMPER WITH LOADBREAK ELBOWS ON EACH END
11	AUTOMATIC TRANSFER CONTROL PACKAGE

OPTIONAL EQUIPMENT

51	600 AMP DEADBREAK ELBOW - SPECIFY VOLTAGE & CABLE INFORMATION
----	---

NOTE:

SEE JOB MATERIAL LIST FOR ADDITIONAL EQUIPMENT
PROVIDE ELBOWS WITH ADDITIONAL SUPPORT AS REQUIRED

VACUUM SWITCHGEAR - DEADFRONT

15/25KV 600 AMP 95/125KV BIL
SWITCHED 3-WAYS AUTO TRANSFER VFI 1 WAY 12KAIC

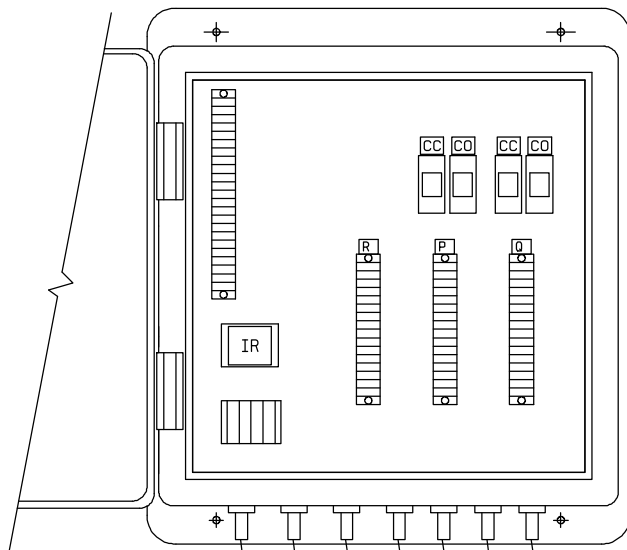


POWER DESIGN INC.

ODELL, OREGON

DRAWN:	PAGE	DATE	DRAWING NO.
BB	1 OF 2	7-5-94	1212

FILE REF.



TO "PA"
PT

TO "R"
ETC
CONTROL

TO "P"
MOTOR
OPER

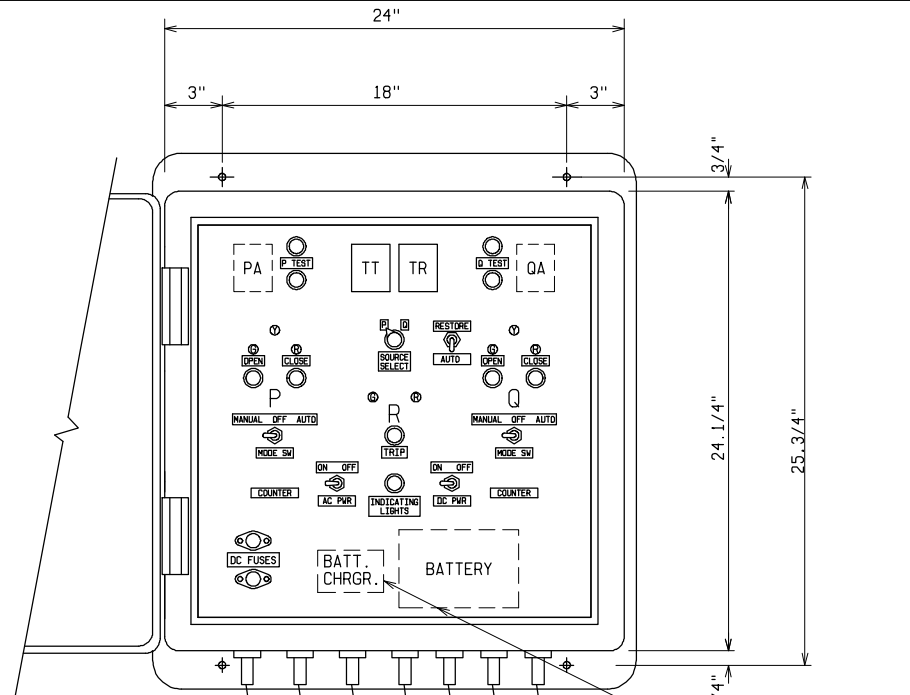
TO "Q"
MOTOR
OPER

TO "QA"
PT

TO "P"
AUX. SW.

TO "Q"
AUX. SW.

BACK PANEL DETAIL
FRONT PANEL OPEN



TO "PA"
PT

TO "R"
ETC
CONTROL

TO "P"
MOTOR
OPER

TO "Q"
MOTOR
OPER

TO "QA"
PT

TO "P"
AUX. SW.

TO "Q"
AUX. SW.

BATTERY, BATT. CHRGR.,
PA & QA ON BACK
SIDE OF FRONT PANEL

HINGED FRONT PANEL DETAIL

CABINET - 24 x 24 x 10
FIBERGLASS

AUTOMATIC TRANSFER CONTROL CABINET
24 x 24 x 10 FIBERGLASS
RVAC OPERATORS ON S1 & S2 VFI ON TAP

POWER DESIGN INC.
ODELL, OREGON

FILE REF.	DRAWN: BB	PAGE 2 OF 2	DATE 7-5-94	DRAWING NO. 1212
-----------	--------------	----------------	----------------	---------------------