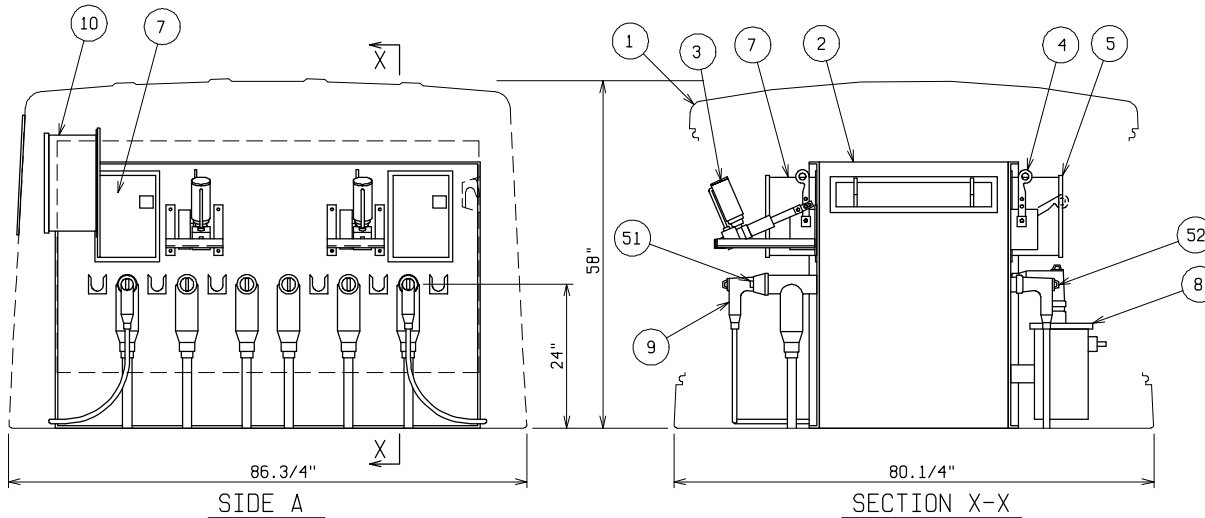


PAD & ANCHOR BOLT DETAIL

ANCHOR BOLTS TO BE 5/8" DIA. & TO EXTEND 1-1/2" MINIMUM ABOVE PAD. PROVIDE CABLE ENTRY AS REQ'D.



MATERIAL LIST - STANDARD UNIT

| ITEM | DESCRIPTION |
|------|---|
| 1 | FIBERGLASS EQUIPMENT ENCLOSURE - 4 DOOR - STANDARD GREEN - STNLS STL HARDWARE - PDI MODEL NO. PE4-86-1 |
| 2 | VACUUM LOADBREAK/FAULT INTERRUPTER SWITCH - SF6 INSULATION 600/200 AMP - 15/25KV - 95/125KV BIL - 12 KAIC |
| 3 | REMOTE CONTROL MOTOR OPERATOR - STORED ENERGY OPERATOR |
| 4 | VACUUM FAULT INTERRUPTER OPERATOR (VFI) |
| 5 | VACUUM FAULT INTERRUPT CONTROL - ELECTRONIC TRIP CONTROL (ETC) |
| 6 | RELAY CLASS CURRENT TRANSFORMERS - INTERNALLY MOUNTED |
| 7 | AUXILIARY SWITCH HOUSING |
| 8 | DEADFRONT CONTROL POWER TRANSFORMER - 125KV BIL |
| 9 | CONTROL TRANSFORMER JUMPER WITH LOADBREAK ELBOWS ON EACH END |
| 10 | LOCAL/REMOTE SWITCHING CONTROL PANEL - 2 CIRCUIT |
| 11 | FIBERGLASS CONTROL PANEL ACCESS DOOR |

OPTIONAL EQUIPMENT

| | |
|----|---|
| 51 | 600 AMP DEADBREAK ELBOW - SPECIFY VOLTAGE & CABLE INFORMATION |
| 52 | 200 AMP LOADBREAK ELBOW - SPECIFY VOLTAGE & CABLE INFORMATION |

NOTE:

SEE JOB MATERIAL LIST FOR ADDITIONAL EQUIPMENT
PROVIDE ELBOWS WITH ADDITIONAL SUPPORT AS REQUIRED

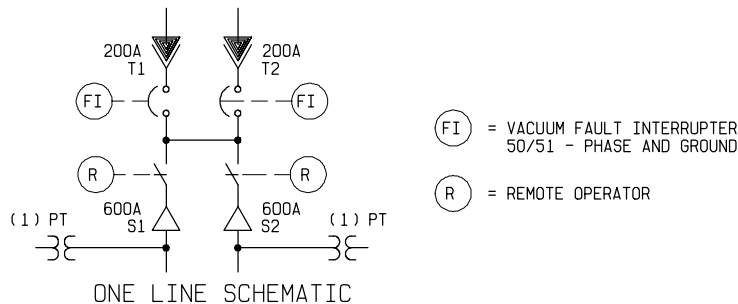
VACUUM SWITCHGEAR - DEADFRONT

15/25KV 600/200 AMP 95/125KV BIL
REMOTE SWITCHED 2 WAYS VACUUM FAULT INTERRUPTED 12KAIC 2 WAYS



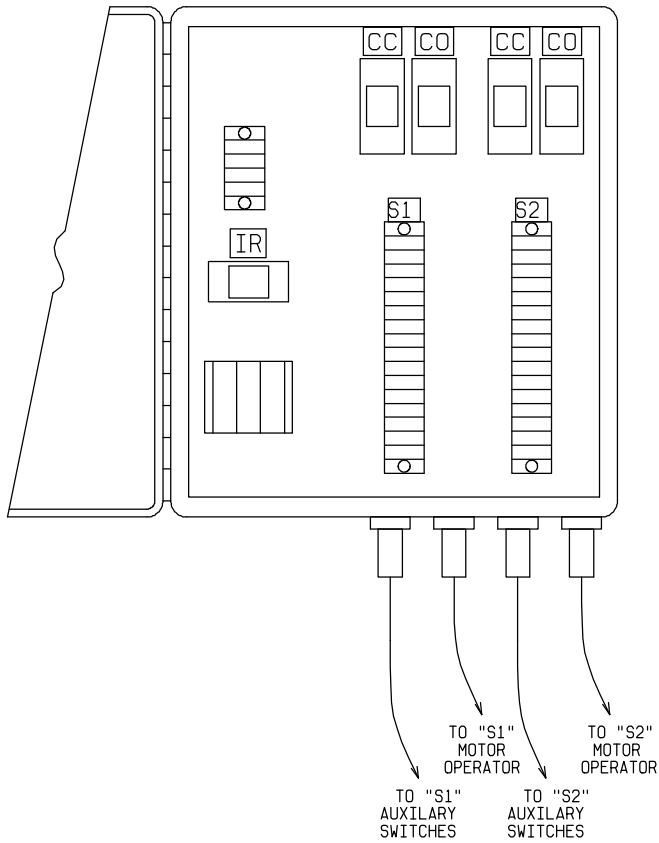
POWER DESIGN INC.

ODELL, OREGON

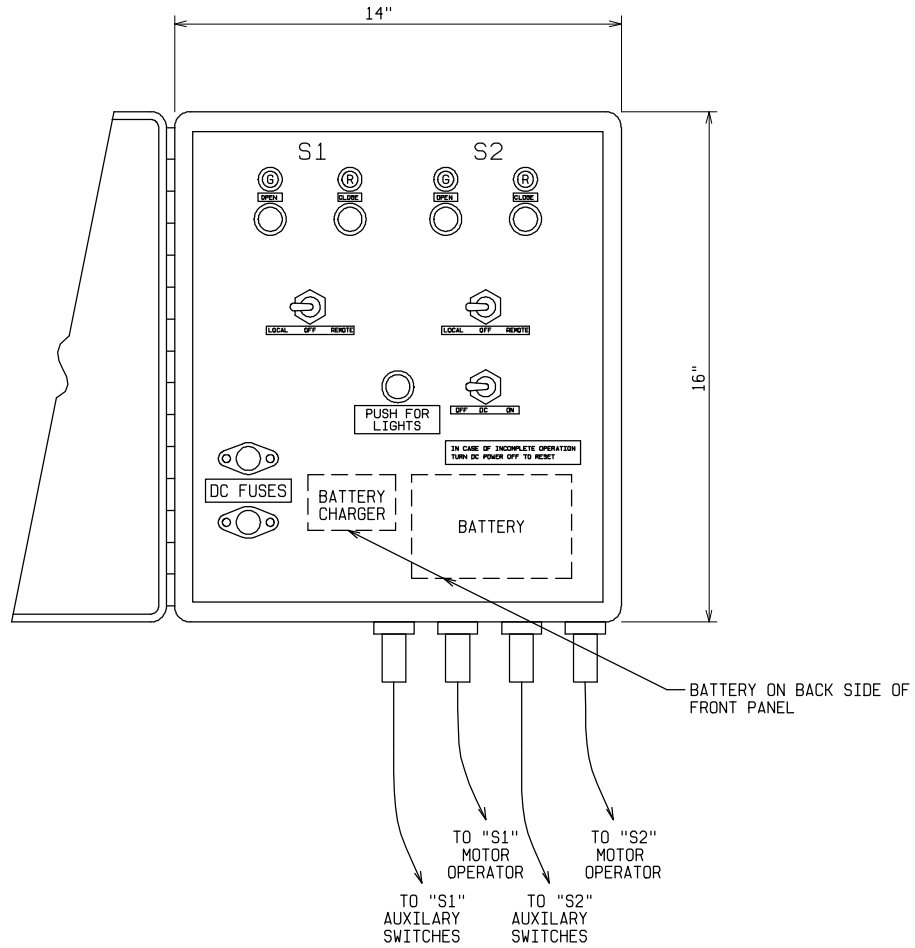


FILE REF.

| DRAWN: | PAGE | DATE | DRAWING NO. |
|--------|--------|--------|-------------|
| BB | 1 OF 2 | 7-7-94 | 1210 |




BACK PANEL DETAIL
FRONT PANEL OPEN



HINGED FRONT PANEL DETAIL

CABINET - 14 x 16 x 8
STAINLESS STEEL

| | | | |
|---|----------------|----------------|---------------------|
| LOCAL/REMOTE CONTROL CABINET 14 x 16 x 8 STAINLESS STEEL 2 CIRCUIT MOTOR OPERATORS - TAP S1 AND TAP S2 | | | |
|  POWER DESIGN INC. ODELL, OREGON | | | |
| DRAWN: BB | PAGE 2 OF 2 | DATE 7-5-94 | DRAWING NO. 1210 |

FILE REF.